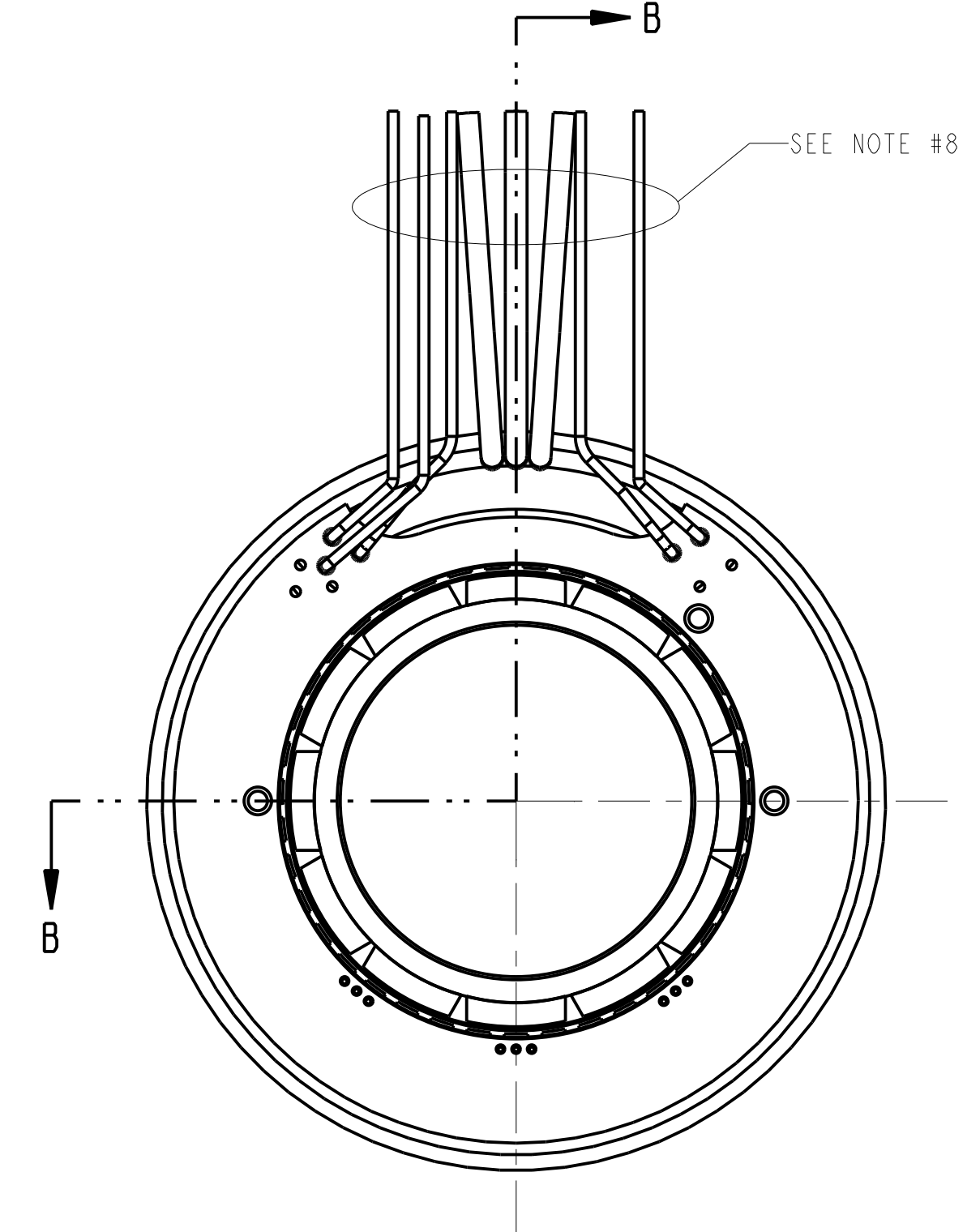
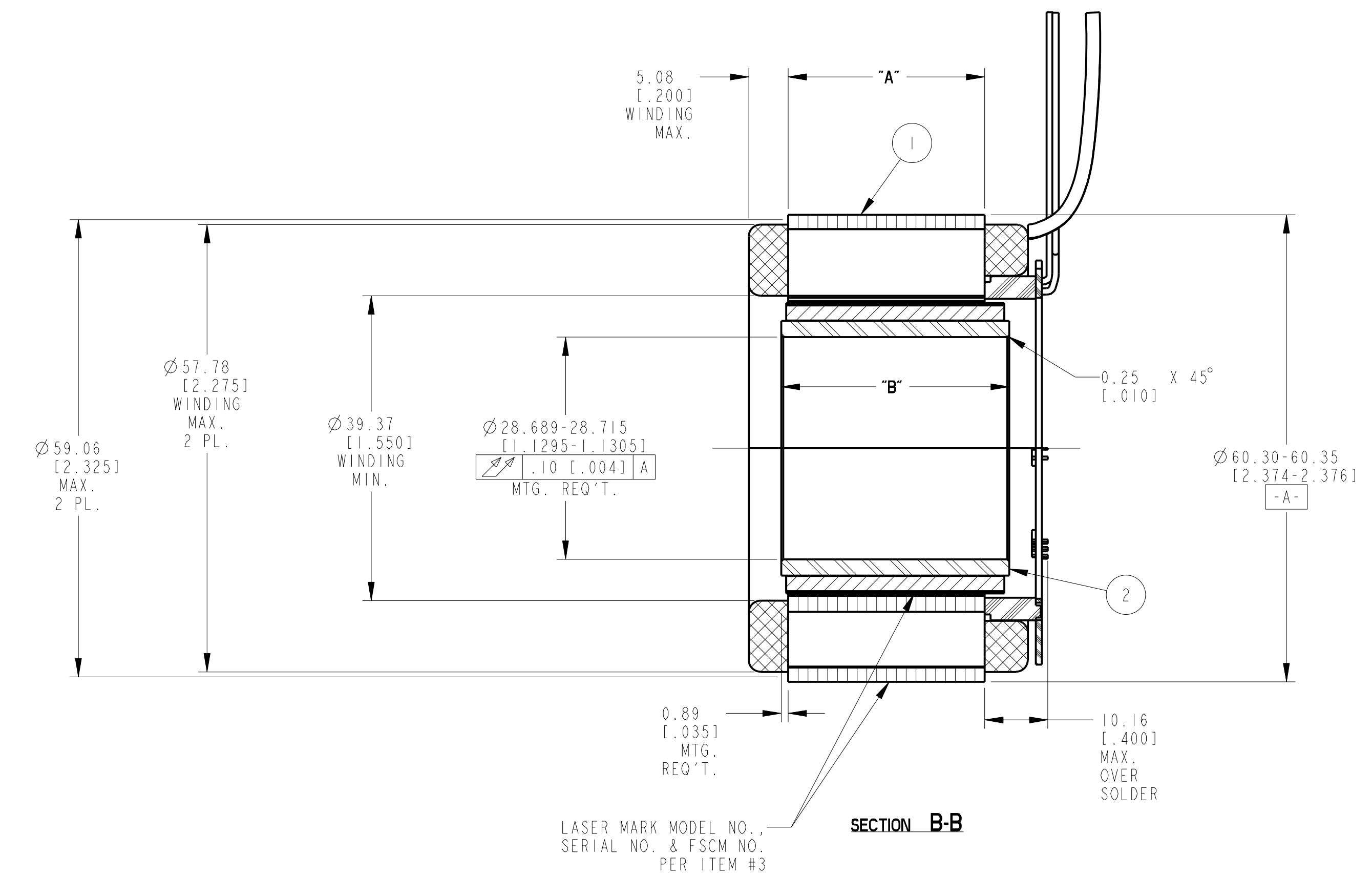


REV	ECN NO.	DESCRIPTION	DATE	APPROVED
-----	---------	-------------	------	----------

- NOTES:
- MOTOR SUPPLIED AS TWO SEPARATE COMPONENTS: ARMATURE & SENSOR ASSEMBLY AND FIELD ASSEMBLY
 - FOR A C.W. ROTATION, AS VIEWED FROM LEAD END, ENERGIZE PER EXCITATION SEQUENCE TABLE.
 - R= 1.5K OHMS APPROX. (CUSTOMER SUPPLIED)
 - V-AB, V-BC AND V-CA IS BACK EMF OF MOTOR PHASES AB, BC AND CA RESPECTIVELY, ALIGNED WITH SENSOR OUTPUT AS SHOWN FOR C.W. ROTATION ONLY.
 - MOUNTING SURFACE IS BETWEEN $\phi 59.06$ [2.325] AND $\phi 60.35$ [2.376] ON BOTH SIDES.
 - SENSORS SET FOR BI-DIRECTIONAL ROTATION.
 - DIMENSIONS IN BRACKETS () ARE IN INCHES AND ARE FOR REFERENCE ONLY.
 - MIN. BEND RADIUS FOR MOTOR LEADS IS 6.90 [1.27]. MIN. BEND RADIUS FOR SENSOR LEADS IS 3.90 [1.15].

MOTOR LEADS:
 #18 AWG TEFLON, COATED, PER MIL-W-22759/11, 3 LEADS, 400 mm [15.75"] MIN. LONG EACH, 1-RED, 1-WHITE & 1-BLACK

SENSOR LEADS:
 #26 AWG, TYPE "ET", TEFLON, COATED PER MIL-W-16878, 5 LEADS, 400 mm [15.75"] MIN. LONG EACH, 1-BLUE, 1-BROWN, 1-GREEN, 1-ORANGE & 1-YELLOW



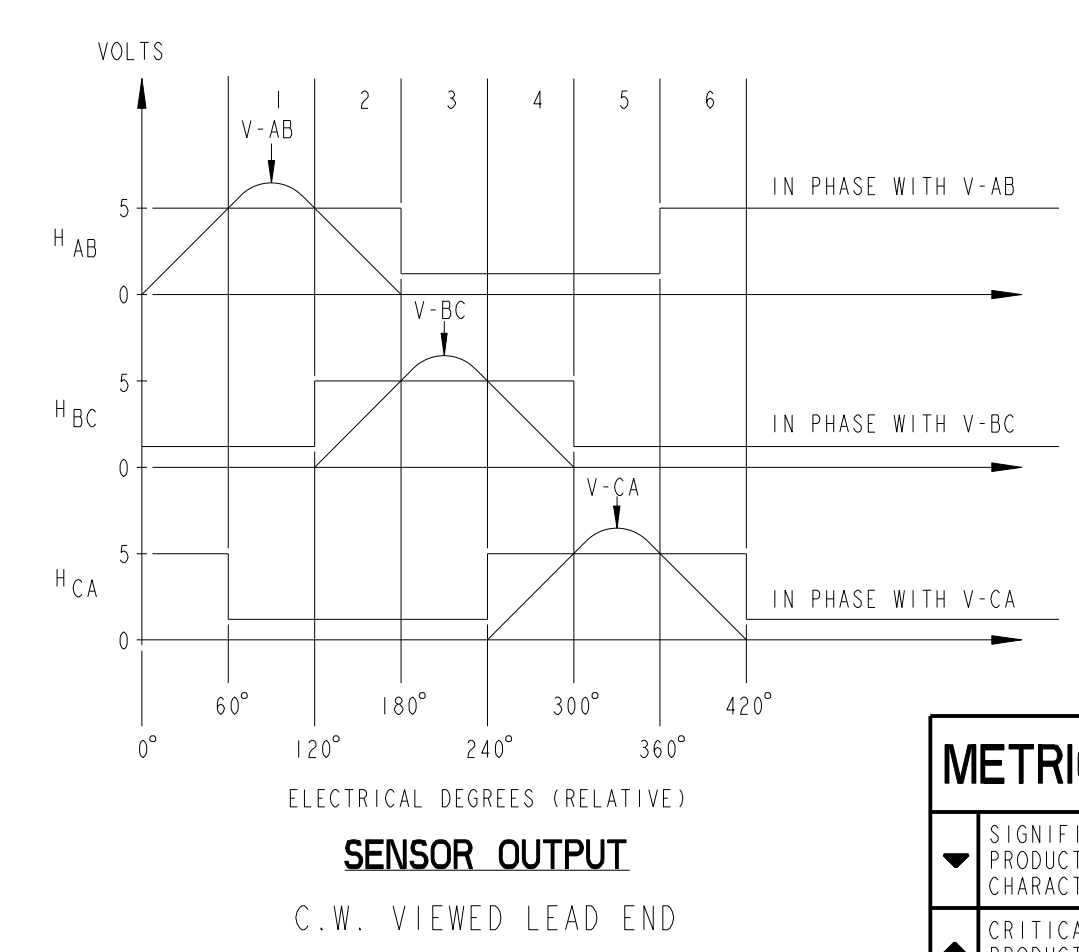
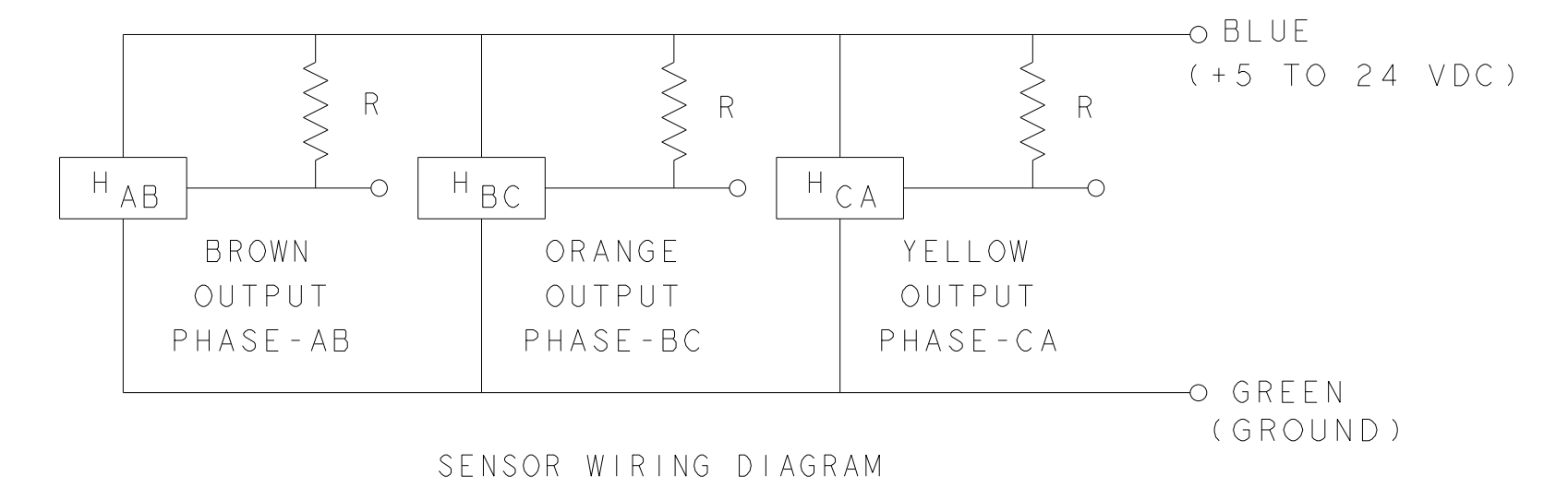
MOTOR WIRING DIAGRAM

PHASE "A"	RED LEAD
PHASE "B"	WHITE LEAD
PHASE "C"	BLACK LEAD

MODEL NUMBER	ARMATURE & SENSOR ASSY.	FIELD ASSY.	"A" DIM.	"B" DIM.
TBMS-6013	960632/013	960633/013	12.45-12.95 [.490-.510]	16.76 [.660]
TBMS-6025	960632/025	960633/025	25.15-25.65 [.990-1.010]	29.46 [1.160]
TBMS-6051	960632/051	960633/051	50.55-51.05 [1.990-2.010]	54.86 [2.160]

EXCITATION SEQUENCE TABLE

STEP	RED	WHITE	BLACK
1	(+)	(-)	(-)
2	(+)	(-)	(-)
3	(-)	(+)	(-)
4	(-)	(+)	(-)
5	(-)	(-)	(+)
6	(-)	(-)	(+)



ATTENTION
 Static-Sensitive Devices
 Handle Only at Static-Safe Workstations

THIS DOCUMENT IS ONLY FOR USE BY THE INTENDED RECIPIENT AND CONTAINS KOLLMORGEN CONFIDENTIAL INFORMATION

Pro/E Instance Name: TBMS-60XX-960631
 Pro/E Drawing Name: 960631
 Pro/E Model Type: ASSEM
 Pro/Engineer Drawing

3	AR	IM-2709	MARKING PROCEDURE
2	I	SEE TABLE	FIELD ASSEMBLY
1	I	SEE TABLE	ARMATURE AND SENSOR ASSEMBLY
ITEM	QTY	IDENTIFYING NO.	DESCRIPTION
LIST OF PARTS			
		KOLLMORGEN	
		501 MAIN STREET RADFORD, VIRGINIA 24141	
OUTLINE TBMS-60XX-X00			
UNLESS OTHERWISE SPECIFIED: REMOVE ALL SHARP BURRS AND BREAK ALL SHARP EDGES X DECIMAL PLACES ±.4 [.015] XX DECIMAL PLACES ±.13 [.005] ANGULAR DIMENSIONS ±P		M. STONE 22-Jun-14	
DO NOT SCALE DRAWING; USE DIMENSIONS ONLY ALL DIMENSIONS ARE IN MILLIMETERS DIMENSIONS IN BRACKETS () ARE IN INCHES AND ARE FOR REFERENCE ONLY		FSCM 11384 D	
INTERPRET GEOMETRIC SYMBOLS PER ANSI Y14.5M-1982		A. GARLICH 5-19-14	
SCALE: 2:1		JOB NO.: 960631	
		SHEET 1 OF 1	