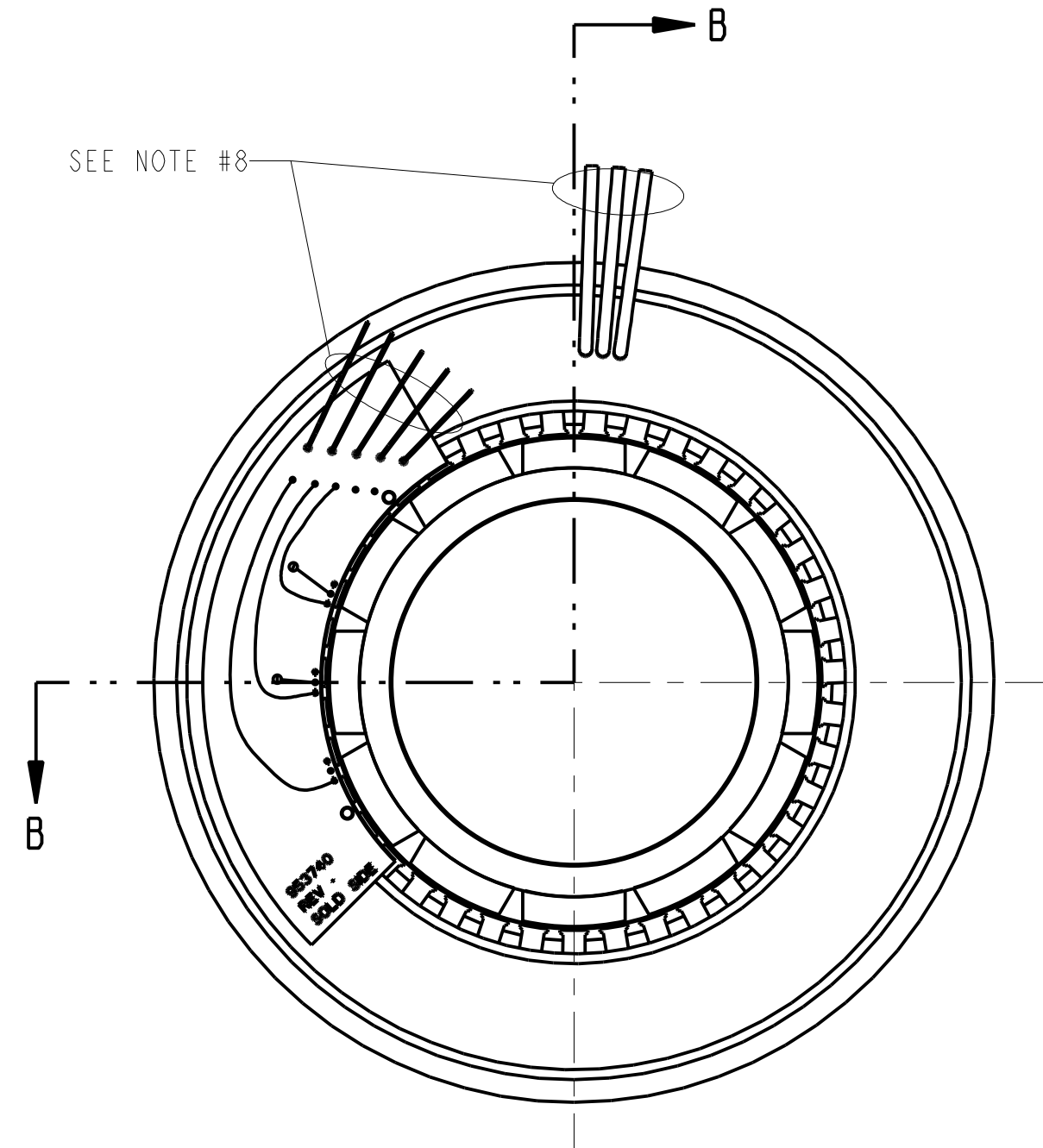
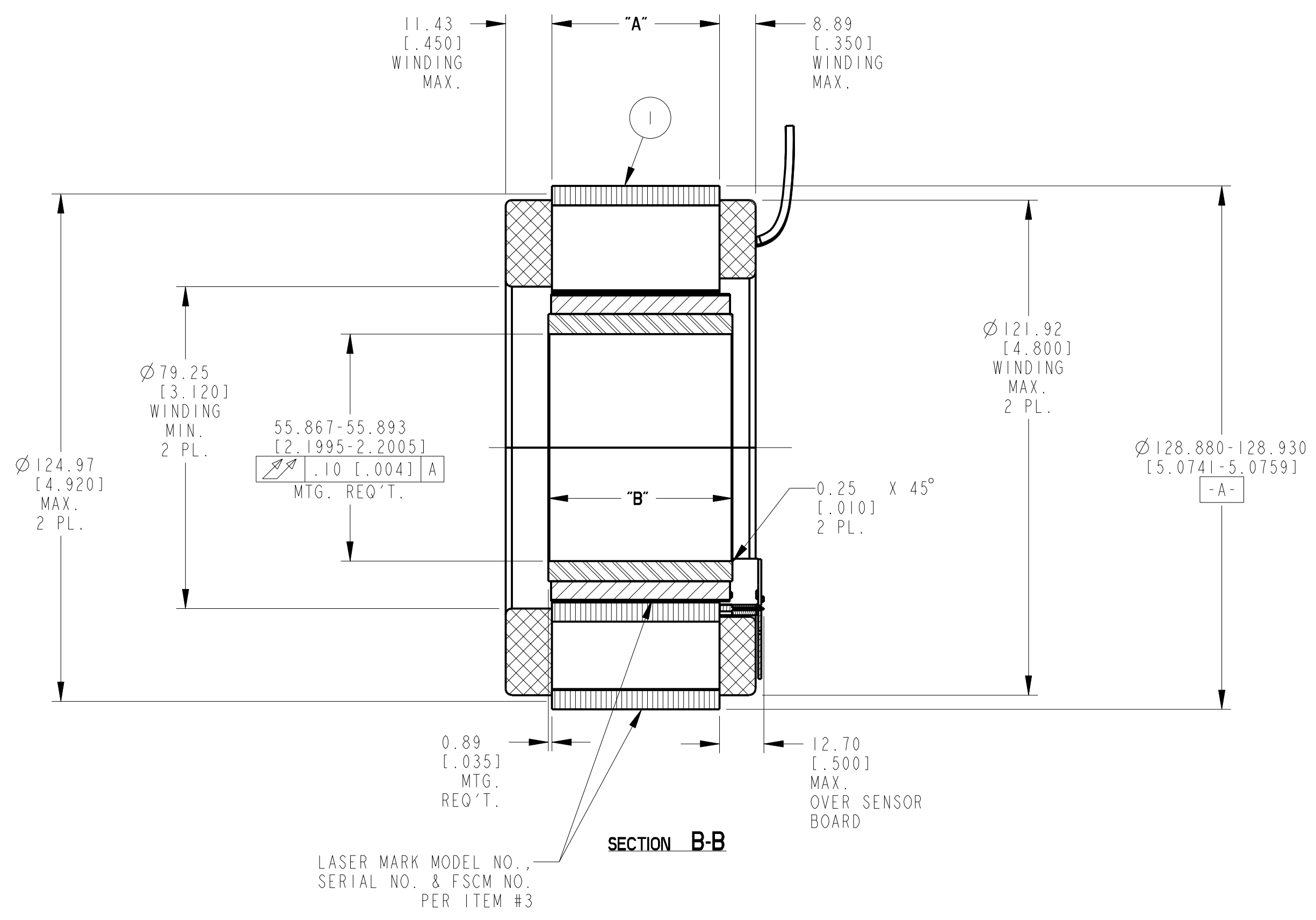


REV	ECN NO.	DESCRIPTION	DATE	APPROVED
A	R01.16850	SEE ECO	M. STONE 4/7/15	LW

- NOTES:
- MOTOR SUPPLIED AS TWO SEPARATE COMPONENTS: ARMATURE & SENSOR ASSEMBLY AND FIELD ASSEMBLY
 - FOR A C.W. ROTATION, AS VIEWED FROM LEAD END, ENERGIZE PER EXCITATION SEQUENCE TABLE.
 - R= 1.5K OHMS APPROX. (CUSTOMER SUPPLIED)
 - V-AB, V-BC AND V-CA IS BACK EMF OF MOTOR PHASES AB, BC AND CA RESPECTIVELY, ALIGNED WITH SENSOR OUTPUT AS SHOWN FOR C.W. ROTATION ONLY.
 - MOUNTING SURFACE IS BETWEEN Ø124.97 [4.920] AND 128.91 [5.075] ON BOTH SIDES.
 - SENSORS SET FOR BI-DIRECTIONAL ROTATION.
 - DIMENSIONS IN BRACKETS () ARE IN INCHES AND ARE FOR REFERENCE ONLY.
 - MIN. BEND RADIUS FOR MOTOR LEADS IS 7.62 [0.30]. MIN. BEND RADIUS FOR SENSOR LEADS IS 3.90 [0.15].

MOTOR LEADS:
 #16 AWG TEFLON, COATED, PER MIL-W-22759/11, 3 LEADS, 400 mm [15.75"] MIN. LONG EACH, 1-RED, 1-WHITE & 1-BLACK

SENSOR LEADS:
 #26 AWG, TYPE "ET", TEFLON, COATED PER MIL-W-16878, 5 LEADS, 400 mm [15.75"] MIN. LONG EACH, 1-BLUE, 1-BROWN, 1-GREEN, 1-ORANGE & 1-YELLOW



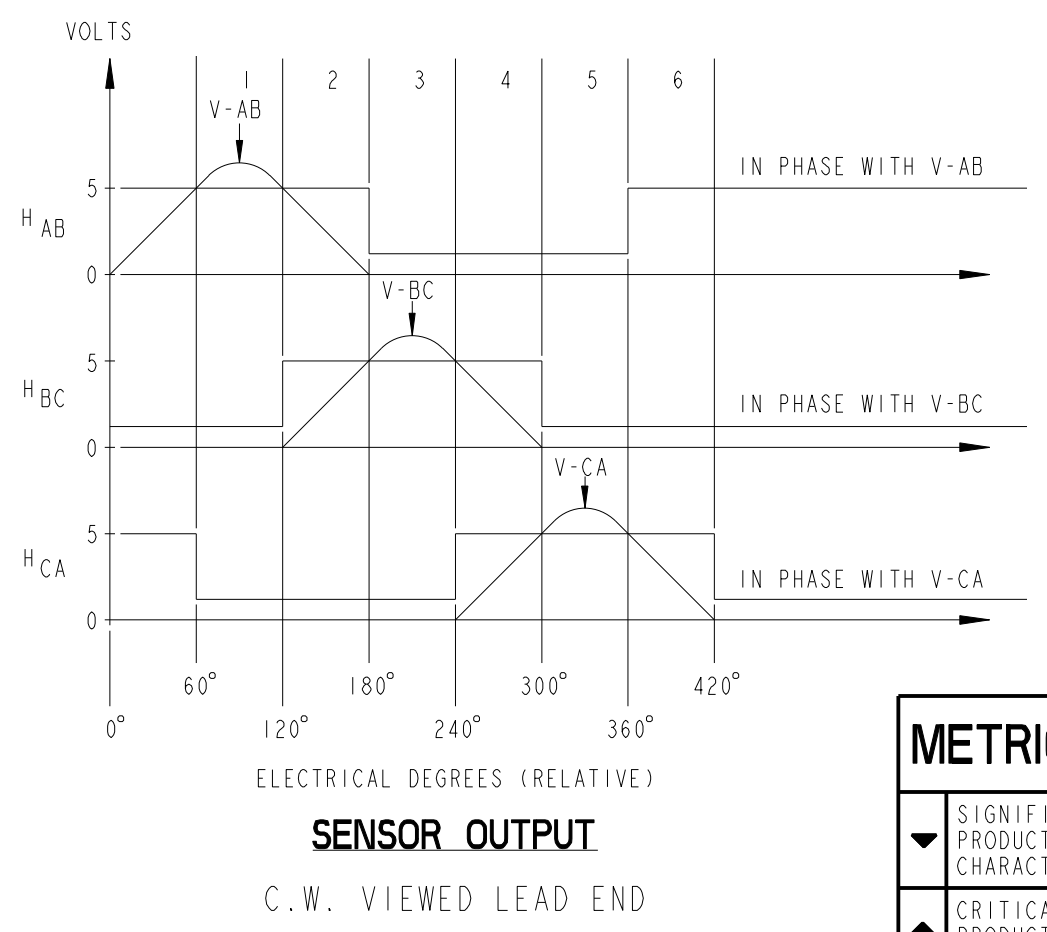
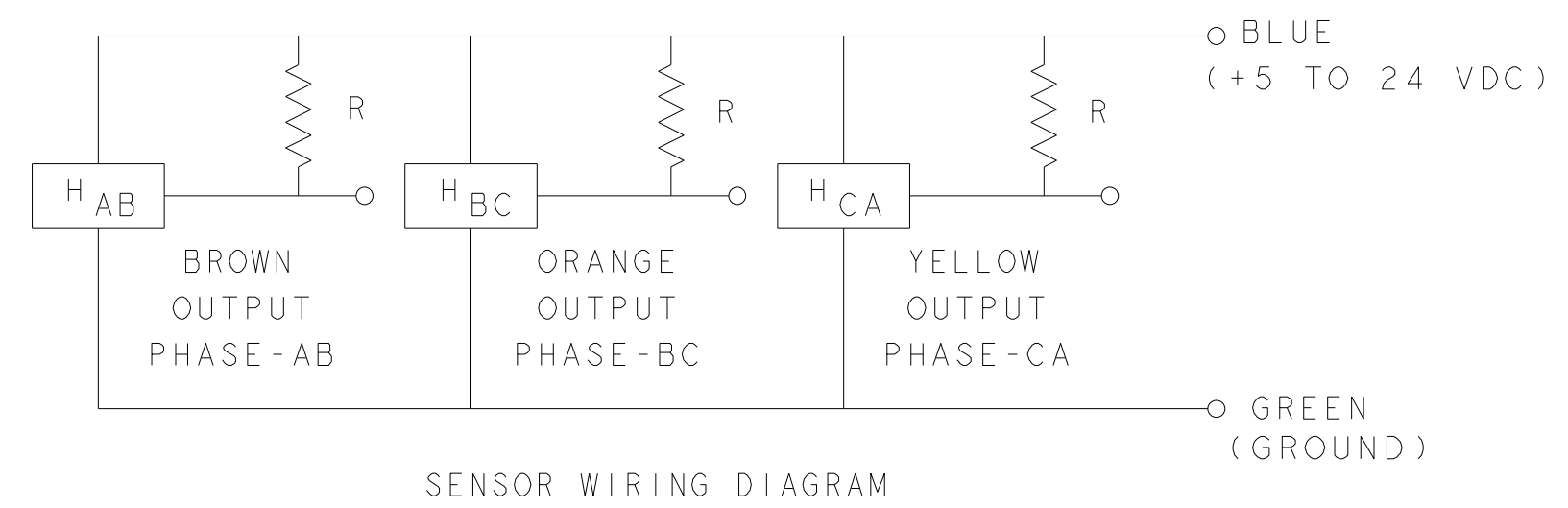
MOTOR WIRING DIAGRAM

PHASE "A"	RED LEAD
PHASE "B"	WHITE LEAD
PHASE "C"	BLACK LEAD

MODEL NUMBER	ARMATURE & SENSOR ASSY.	FIELD ASSY.	"A" DIM.	"B" DIM.
TBMS-12913	960639/013	960638/013	13.08-13.59 [.515-.535]	17.40 [.685]
TBMS-12941	960639/041	960638/041	41.02-41.53 [1.615-1.635]	45.34 [1.785]
TBMS-12955	960639/055	960638/055	54.36-54.86 [2.140-2.160]	58.67 [2.310]

EXCITATION SEQUENCE TABLE

STEP	RED	WHITE	BLACK
1	+	-	-
2	+	-	+
3	-	+	-
4	-	+	+
5	-	-	+
6	-	-	-



METRIC DRAWING

UNLESS OTHERWISE SPECIFIED:
 REMOVE ALL SHARP BURRS AND BREAK ALL SHARP EDGES
 X DECIMAL PLACES ±.4 [.015]
 XX DECIMAL PLACES ±.13 [.005]
 ANGULAR DIMENSIONS ±P

ITEM	QTY	IDENTIFYING NO.	DESCRIPTION
3	AR	IM-2709	MARKING PROCEDURE
2	I	SEE TABLE	FIELD ASSEMBLY
1	I	SEE TABLE	ARMATURE AND SENSOR ASSEMBLY

LIST OF PARTS

KOLLMORGEN 501 MAIN STREET RADFORD, VIRGINIA 24141

OUTLINE
TBMS-129XX-X00

DO NOT SCALE DRAWING. USE DIMENSIONS ONLY	DATE: 22-Jun-14	FSCM: 11384	SIZE: D	DWG. NO.: 960636	REV: A
ALL DIMENSIONS ARE IN MILLIMETERS	DATE: 5-15-14	SCALE: 1:1	JOB NO.:	SHEET 1 OF 1	



THIS DOCUMENT IS ONLY FOR USE BY THE INTENDED RECIPIENT AND CONTAINS KOLLMORGEN CONFIDENTIAL INFORMATION

Pro/E Instance Name: TBMS-129X-96036
 Pro/E Drawing Name: 960636
 Pro/E Model Type: ASSEM
 Pro/Engineer Drawing