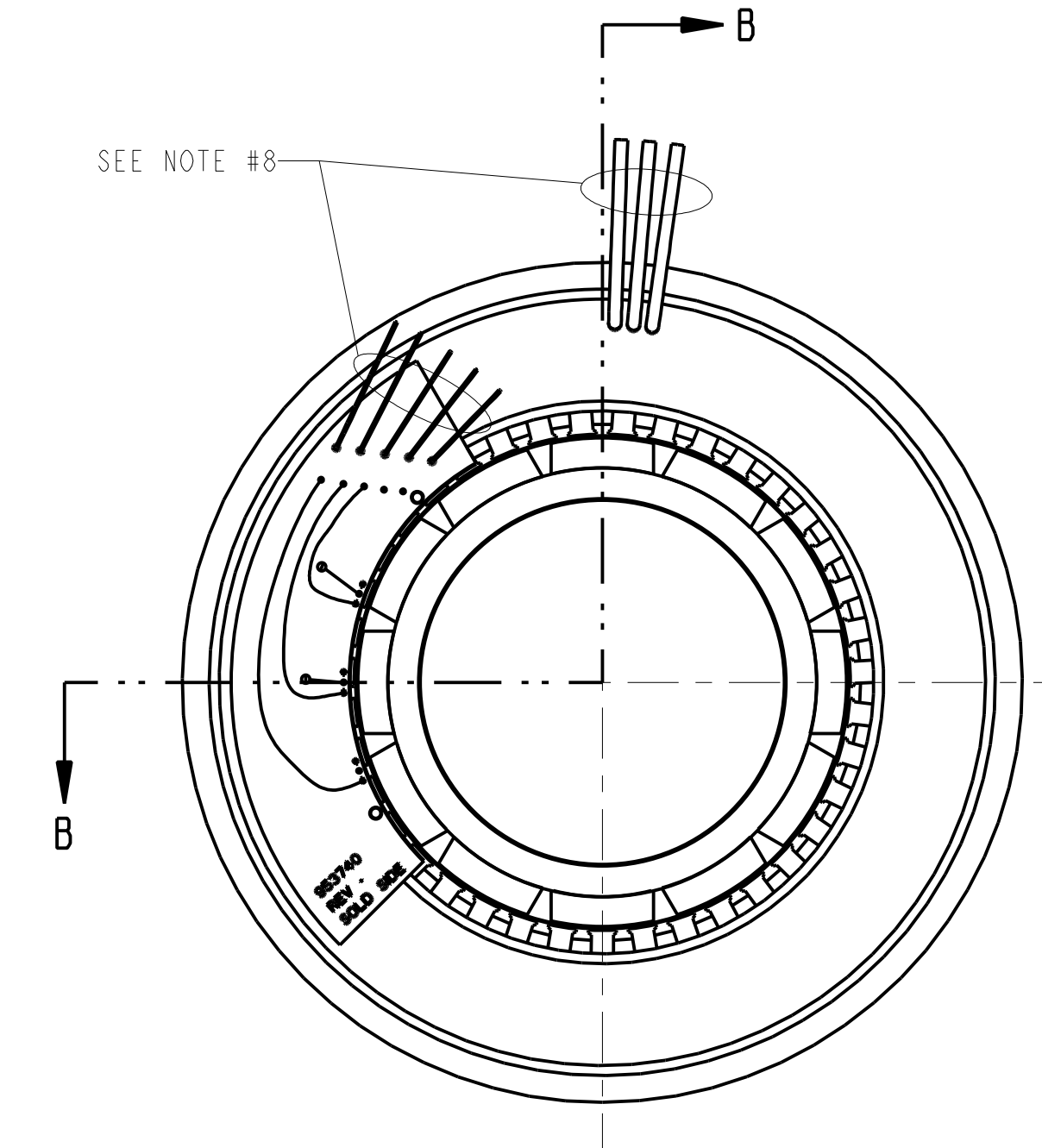
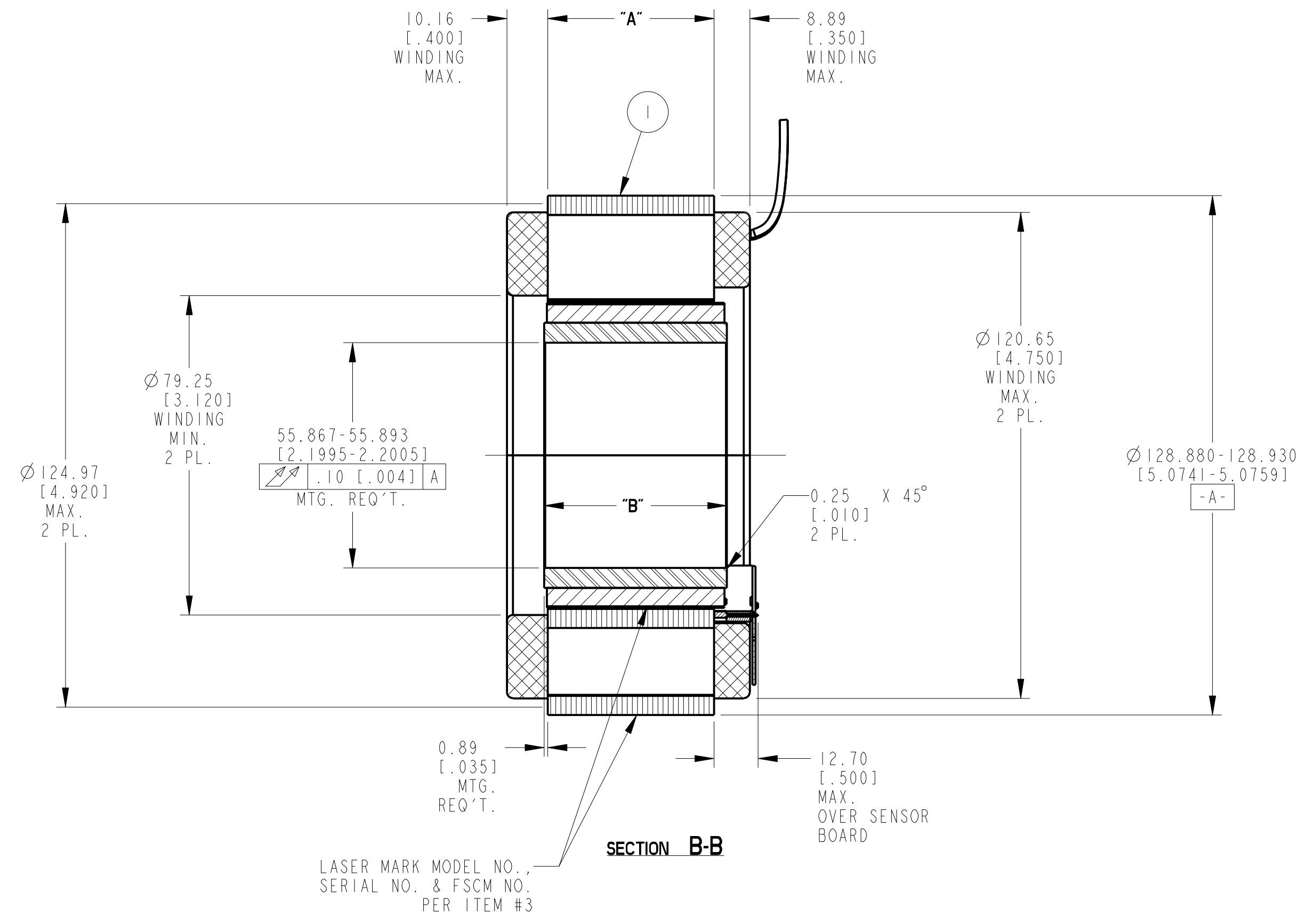


REVISION				
REV	ECN NO.	DESCRIPTION	DATE	APPROVED

- NOTES:
- MOTOR SUPPLIED AS TWO SEPARATE COMPONENTS: ARMATURE & SENSOR ASSEMBLY AND FIELD ASSEMBLY
 - FOR A C.W. ROTATION, AS VIEWED FROM LEAD END, ENERGIZE PER EXCITATION SEQUENCE TABLE.
 - R= 1.5K OHMS APPROX. (CUSTOMER SUPPLIED)
 - V-AB, V-BC AND V-CA IS BACK EMF OF MOTOR PHASES AB, BC AND CA RESPECTIVELY, ALIGNED WITH SENSOR OUTPUT AS SHOWN FOR C.W. ROTATION ONLY.
 - MOUNTING SURFACE IS BETWEEN Ø124.97 [4.920] AND 128.91 [5.075] ON BOTH SIDES.
 - SENSORS SET FOR BI-DIRECTIONAL ROTATION.
 - DIMENSIONS IN BRACKETS () ARE IN INCHES AND ARE FOR REFERENCE ONLY.
 - MIN. BEND RADIUS FOR MOTOR LEADS IS 7.62 [1.30]. MIN. BEND RADIUS FOR SENSOR LEADS IS 3.90 [1.15].

MOTOR LEADS:
 #16 AWG TEFLON, COATED, PER MIL-W-22759/11, 3 LEADS, 400 mm [15.75"] MIN. LONG EACH, 1-RED, 1-WHITE & 1-BLACK

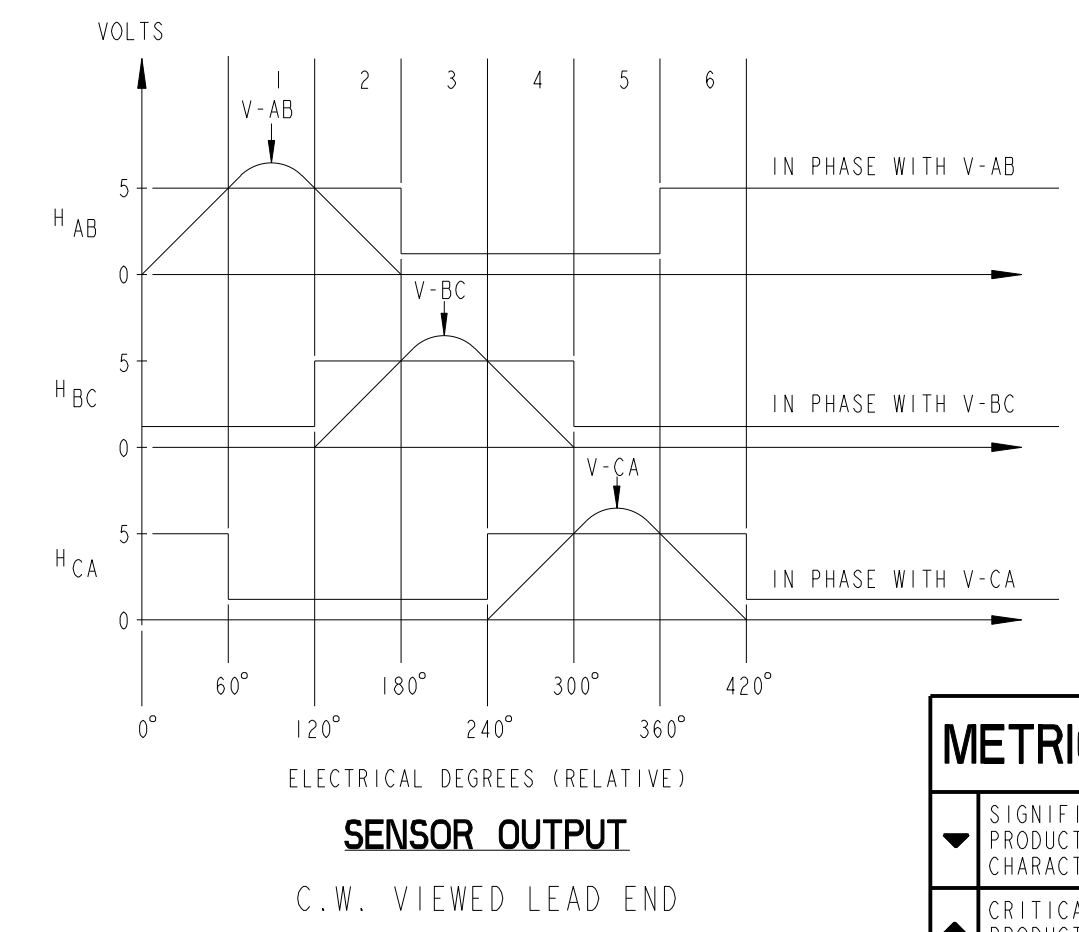
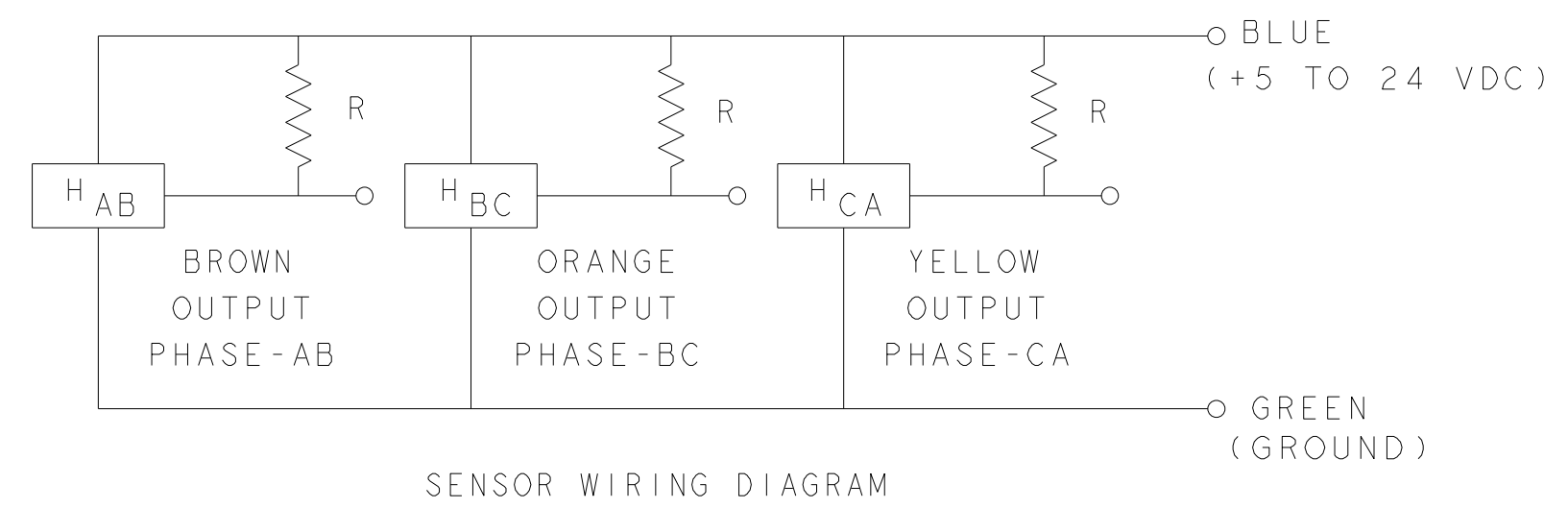
SENSOR LEADS:
 #26 AWG, TYPE "ET", TEFLON, COATED PER MIL-W-16878, 5 LEADS, 400 mm [15.75"] MIN. LONG EACH, 1-BLUE, 1-BROWN, 1-GREEN, 1-ORANGE & 1-YELLOW



PHASE "A"	RED LEAD
PHASE "B"	WHITE LEAD
PHASE "C"	BLACK LEAD

MODEL NUMBER	ARMATURE & SENSOR ASSY.	FIELD ASSY.	"A" DIM.	"B" DIM.
TBMS-12913	960639/013	960638/013	13.08-13.59 [.515-.535]	17.40 [.685]
TBMS-12941	960639/041	960638/041	41.02-41.53 [1.615-1.635]	45.34 [1.785]
TBMS-12955	960639/055	960638/055	54.36-54.86 [2.140-2.160]	58.67 [2.310]

STEP	RED	WHITE	BLACK
1	+	-	-
2	+	-	+
3	-	+	-
4	-	+	+
5	-	-	+
6	-	-	-



THIS DOCUMENT IS ONLY FOR USE BY THE INTENDED RECIPIENT AND CONTAINS KOLLMORGEN CONFIDENTIAL INFORMATION

Pro/E Instance Name: TBMS-129X-96036
 Pro/E Drawing Name: 960636
 Pro/E Model Type: ASSEM
 Pro/Engineer Drawing

METRIC DRAWING

UNLESS OTHERWISE SPECIFIED: REMOVE ALL SHARP BURRS AND BREAK ALL SHARP EDGES X DECIMAL PLACES ±.4 [.015] XX DECIMAL PLACES ±.13 [.005] ANGULAR DIMENSIONS ±P

DO NOT SCALE DRAWING; USE DIMENSIONS ONLY

ALL DIMENSIONS ARE IN MILLIMETERS UNLESS OTHERWISE SPECIFIED

DIMENSIONS IN BRACKETS () ARE IN INCHES AND ARE FOR REFERENCE ONLY

INTERPRET GEOMETRIC SYMBOLS PER ANSI Y14.5M-1992

ITEM	QTY	IDENTIFYING NO.	DESCRIPTION
3	AR	IM-2709	MARKING PROCEDURE
2	I	SEE TABLE	FIELD ASSEMBLY
1	I	SEE TABLE	ARMATURE AND SENSOR ASSEMBLY

LIST OF PARTS			
KOLLMORGEN		501 MAIN STREET RADFORD, VIRGINIA 24141	
OUTLINE		TBMS-129XX-X00	
11384	D	960636	REV -
SCALE: 1:1	JOB NO.:	SHEET 1 OF 1	