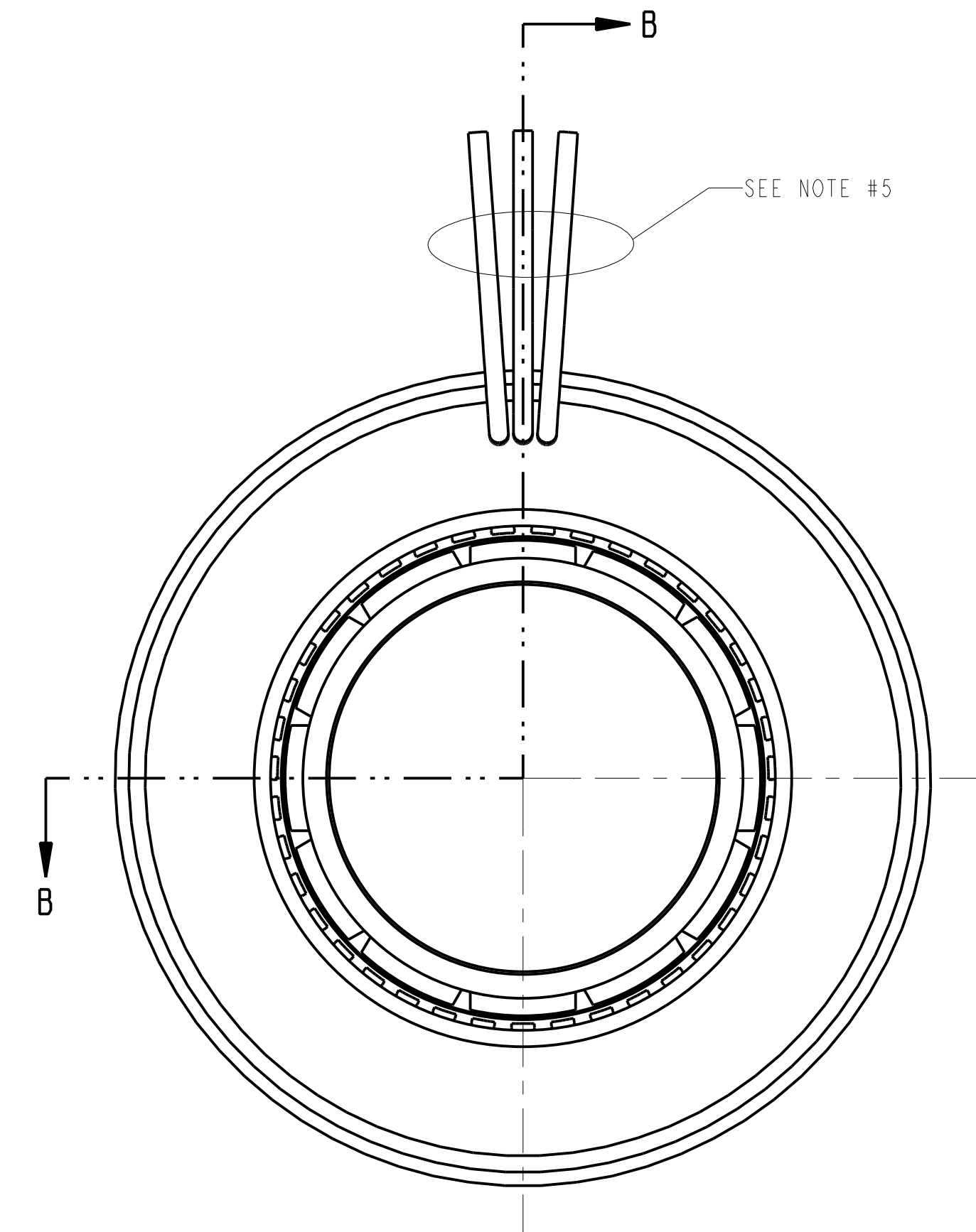
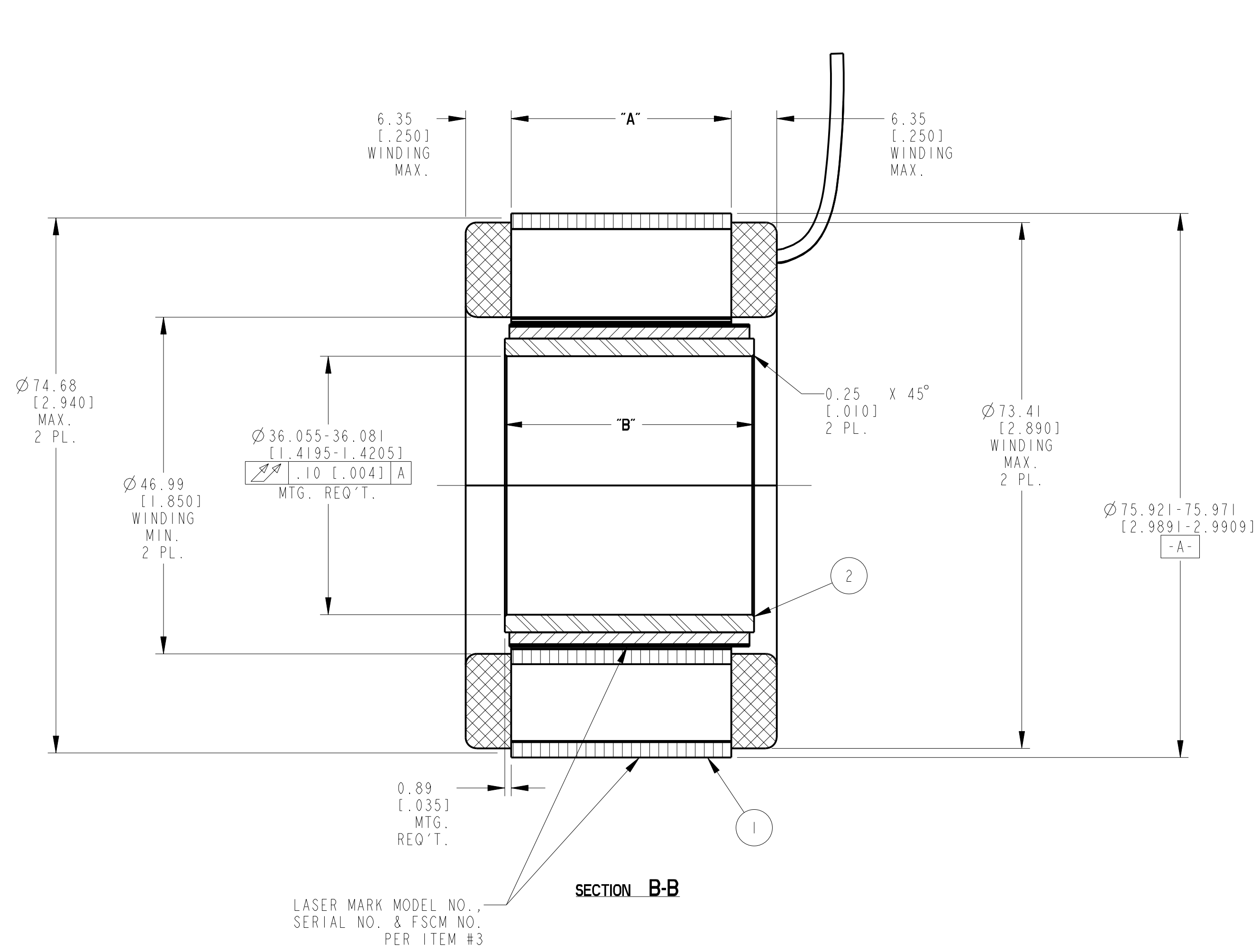


NOTES:  
 1. MOTOR SUPPLIED AS TWO SEPARATE COMPONENTS:  
 ARMATURE & SENSOR ASSEMBLY AND FIELD ASSEMBLY  
 2. FOR A C.W. ROTATION, AS VIEWED FROM LEAD END,  
 ENERGIZE PER EXCITATION SEQUENCE TABLE.  
 3. MOUNTING SURFACE IS BETWEEN Ø74.68 [2.940] AND Ø75.95 [2.990] ON BOTH SIDES.  
 4. DIMENSIONS IN BRACKETS ( ) ARE IN INCHES AND ARE FOR REFERENCE ONLY.  
 5. MIN. BEND RADIUS FOR MOTOR LEADS IS 6.90 [1.27].

MOTOR LEADS:  
 #18 AWG TEFLON, COATED, PER  
 MIL-W-22759/11, 3 LEADS, 400 mm [15.75"] MIN.  
 LONG EACH, 1-RED, 1-WHITE & 1-BLACK



| STEP | RED | WHITE | BLACK |
|------|-----|-------|-------|
| 1    | +   | -     |       |
| 2    | +   |       | -     |
| 3    |     | +     | -     |
| 4    | -   | +     |       |
| 5    | -   |       | +     |
| 6    |     | -     | +     |

EXCITATION SEQUENCE TABLE

| MOTOR WIRING DIAGRAM |            |
|----------------------|------------|
| PHASE "A"            | RED LEAD   |
| PHASE "B"            | WHITE LEAD |
| PHASE "C"            | BLACK LEAD |

| MODEL NUMBER | ARMATURE & SENSOR ASSY. | FIELD ASSY. | "A" DIM.                  | "B" DIM.      |
|--------------|-------------------------|-------------|---------------------------|---------------|
| TBM-7615     | 961004/015              | 961005/015  | 14.99-15.49 [0.590-.610]  | 19.30 [0.760] |
| TBM-7631     | 961004/031              | 961005/031  | 30.48-30.99 [1.200-1.220] | 34.80 [1.370] |
| TBM-7646     | 961004/046              | 961005/046  | 45.97-46.48 [1.810-1.830] | 50.29 [1.980] |

THIS DOCUMENT IS ONLY FOR USE BY THE INTENDED RECIPIENT AND CONTAINS KOLLMORGEN CONFIDENTIAL INFORMATION

Pro/E Instance Name: TBM-76X-961007.D31  
 Pro/E Drawing Name: 961007  
 Pro/E Model Type: ASSEM  
 Pro/Engineer Drawing

| 3                                  | AR  | TM-2709   | MARKING PROCEDURE |
|------------------------------------|-----|---|-------------------|
| 2                                  | I   | SEE TABLE   | FIELD ASSEMBLY    |
| 1                                  | I   | SEE TABLE   | ARMATURE ASSEMBLY |
| ITEM                               | QTY | IDENTIFYING NO.   | DESCRIPTION       |
| LIST OF PARTS                      |     |   |                   |
|                                    |     | <b>KOLLMORGEN</b>   |                   |
|                                    |     | 501 MAIN STREET<br>RADFORD, VIRGINIA 24141  |                   |
| OUTLINE<br>TBM-76XX-X00            |     |   |                   |
| SIGNIFICANT PRODUCT CHARACTERISTIC |     | UNLESS OTHERWISE SPECIFIED:<br>REMOVE ALL SHARP BURRS AND<br>BREAK ALL SHARP EDGES<br>X DECIMAL PLACES ±.4 [0.015]<br>XX DECIMAL PLACES ±.13 [0.005]<br>ANGULAR DIMENSIONS ±P                                   |                   |
| CRITICAL PRODUCT CHARACTERISTIC    |     | DO NOT SCALE DRAWING. USE DIMENSIONS ONLY<br>ALL DIMENSIONS ARE IN MILLIMETERS<br>DIMENSIONS IN BRACKETS ( ) ARE IN INCHES<br>AND ARE FOR REFERENCE ONLY<br>INTERPRET GEOMETRIC SYMBOLS<br>PER ANSI Y14.5M-1992 |                   |
| M. STONE                           |     | 22-Jun-14   |                   |
| A. GARLICH                         |     | FSCM  |                   |
| 11384                              |     | D   |                   |
| 961007                             |     | REV -   |                   |
| SCALE: 2:1                         |     | JOB NO.:  |                   |
|                                    |     | SHEET 1 OF 1  |                   |