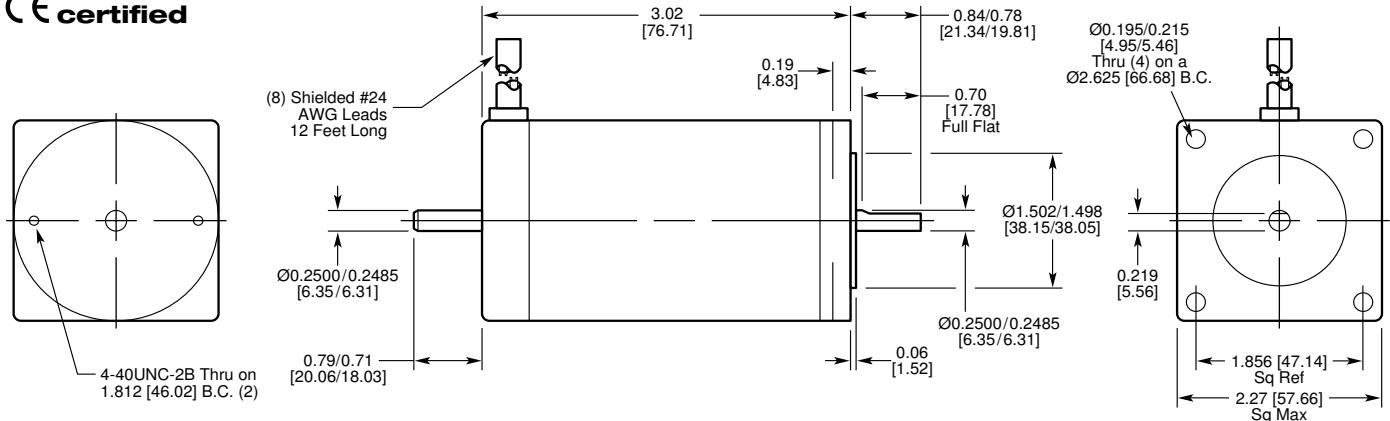


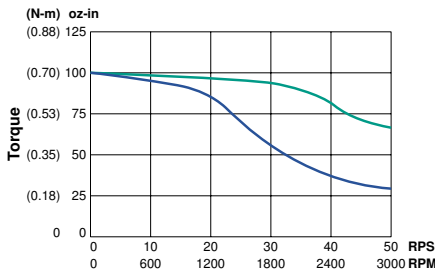


S22 Hybrid Step Motor in [mm]

CE certified



Motor Performance



- 120 Series (100% duty cycle)
- 120 Parallel*/240 Series*
* 50% duty cycle max above 5 rps (300 rpm)

A 30% torque safety margin is recommended when applying step motors.



Warning: Do not run S21, S22 or S23 motors wired in parallel with a NextStep 240 drive or SmartStep 240. Motors will exceed their rated temperatures and be damaged. All motors should be wired in series when run with the NextStep 240 or SmartStep 240.

Applying Gearmotors

- See page I-1 for IDC gearmotor information and for how to determine gearmotor performance

Motor and Encoder Data

	S22 Series	S22 Parallel
Continuous Stall Torque oz-in [N·m]	100 [0.71]	
Recommended Current/Phase Amps	1.5	3.0
Inductance mH	18	4.5
Max. Motor Winding Temp. °F [°C]	248 [120]	
Rotor Inertia oz-in·s ² [kg·m ²]	3.31x10 ⁻³ [2.34x10 ⁻⁵]	
Axial Shaft Load lbs [N]	10 [44]	
Radial Shaft Load @ 0.75" [19 mm]	15 [66]	
Motor Weight lbs [kg]	2.4 [1.1]	
Step Angle (full step) degrees	1.8	
How to order	G-46	

Performance Planetary Gearmotors

	In-line	Right-angle
Gear Ratio in [mm]	L	A x B
3 to 10	5.8 [146.8]	3.61 x 9.51 [91.4 x 241.6]
16 to 100	6.6 [168.0]	3.61 x 10.34 [91.4 x 262.6]
160 to 700	7.4 [188.0]	Above 100:1, not available

Value Planetary Gearmotors

	In-line	Right-angle
Gear Ratio in [mm]	L	A x B
3 to 10	6.1 [155.0]	3.61 x 9.80 [91.4 x 248.9]
16 to 100	7.0 [178.0]	3.61 x 10.70 [91.4 x 271.8]