

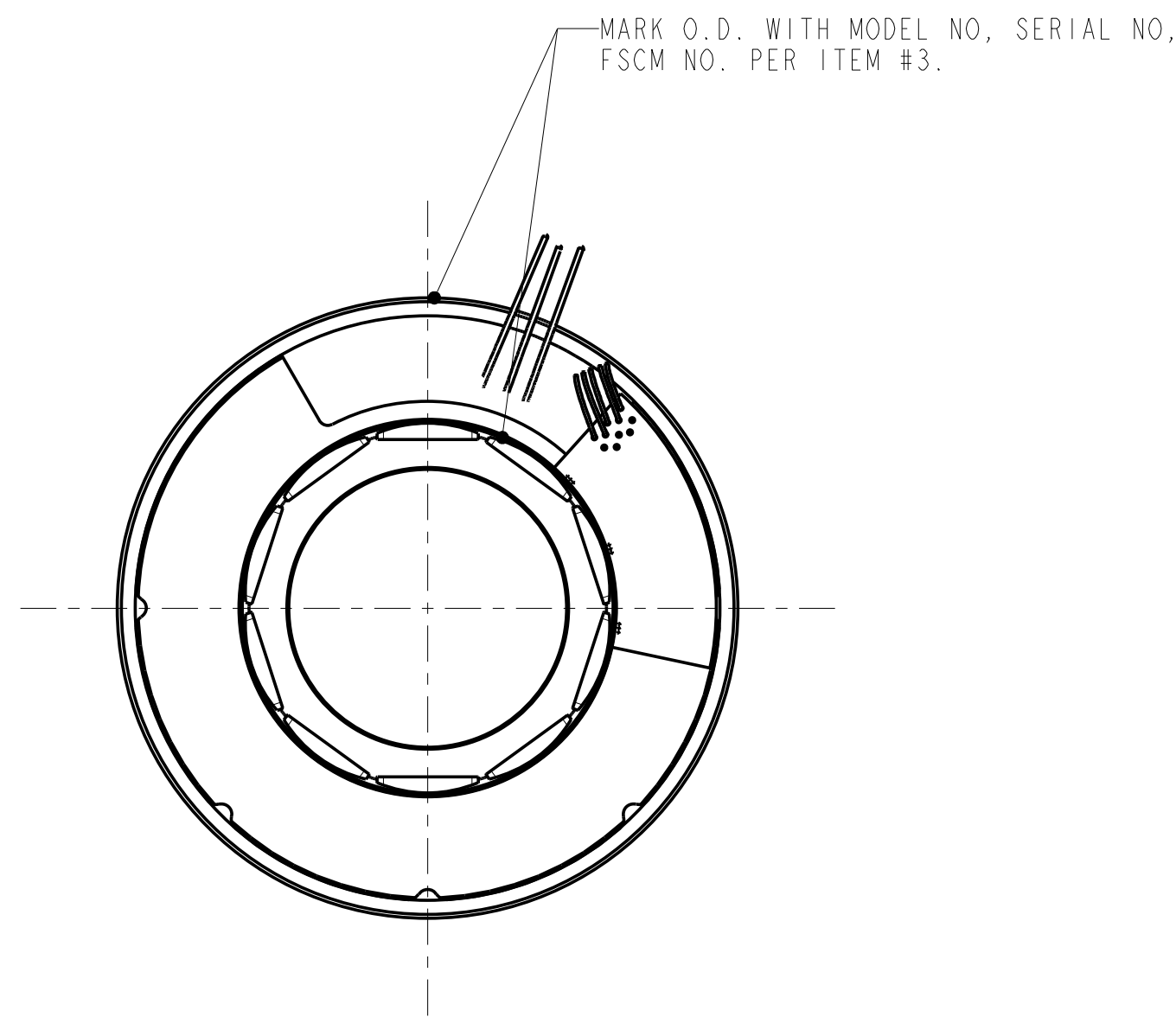
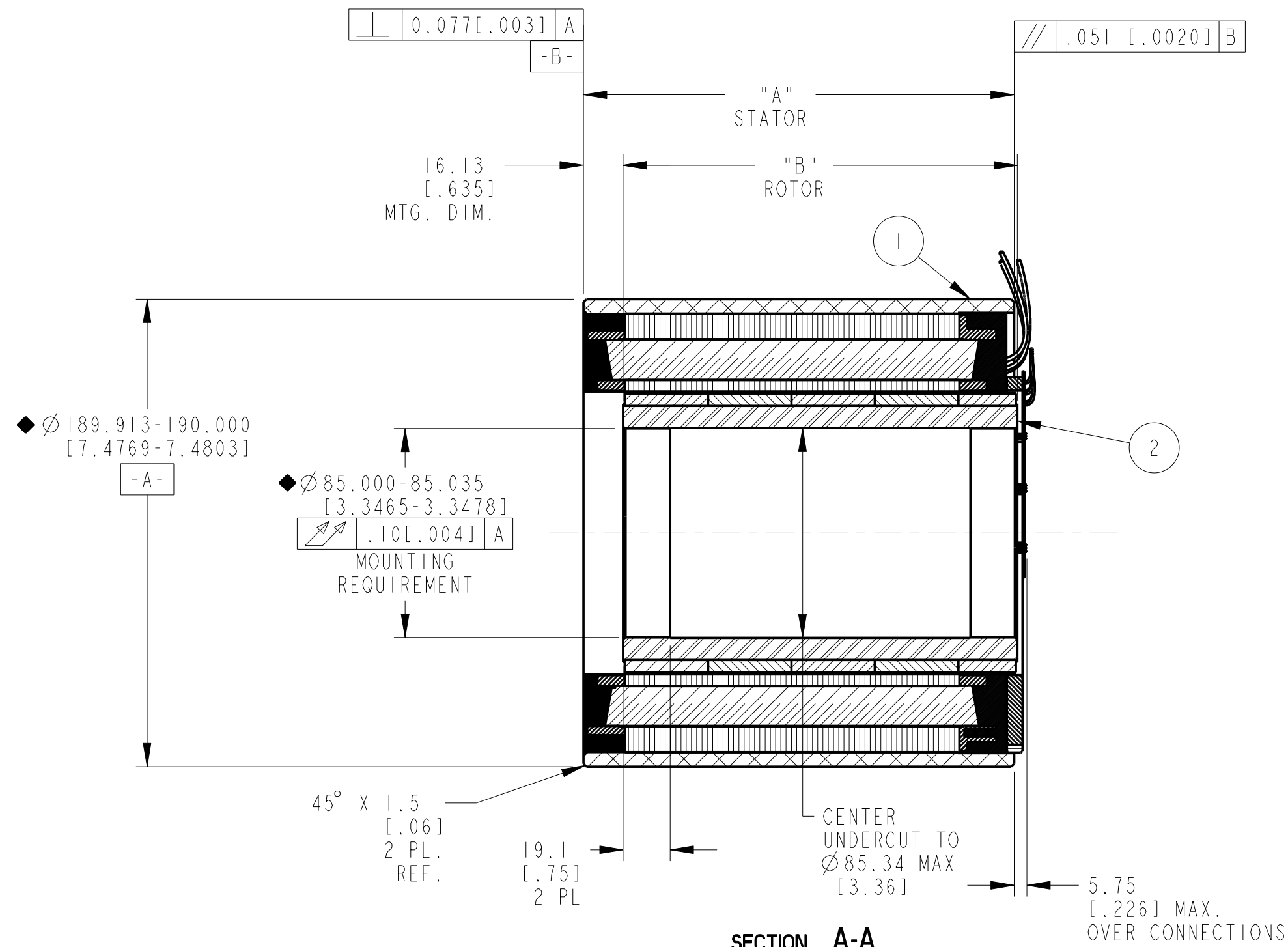
- NOTES:
- 1- MOTOR SUPPLIED AS TWO SEPERATE COMPONENTS, STATOR & SENSOR ASSEMBLY AND FIELD ASSEMBLY.
 - 2- FOR A C.C.W. ROTATION, AS VIEWED FROM LEAD END, ENERGIZE PER EXCITATION SEQUENCE TABLE.
 - 3- R= 1.5K OHMS APPROX. (CUSTOMER SUPPLIED)
 - 4- EMF-UV, EMF-VW AND EMF-WU IS BACK EMF OF MOTOR PHASES UV, VW, AND WU RESPECTIVELY, ALIGNED WITH SENSOR OUTPUT AS SHOWN FOR C.C.W. ROTATION ONLY.
 - 5- SENSORS SET FOR BI-DIRECTIONAL ROTATION.
 - 6- RoHS (DIRECTIVE 2002/95/EC AND AMMENDMENTS) COMPLIANCE REQUIRED.

SENSOR LEADS:
 #26 AWG TEFLON COATED PER MIL-W-22759/11, 400.00 [15.75"] MIN. LG. EACH 1-BLUE, 1-ORANGE, 1-BROWN, 1-GREEN, 1-YELLOW

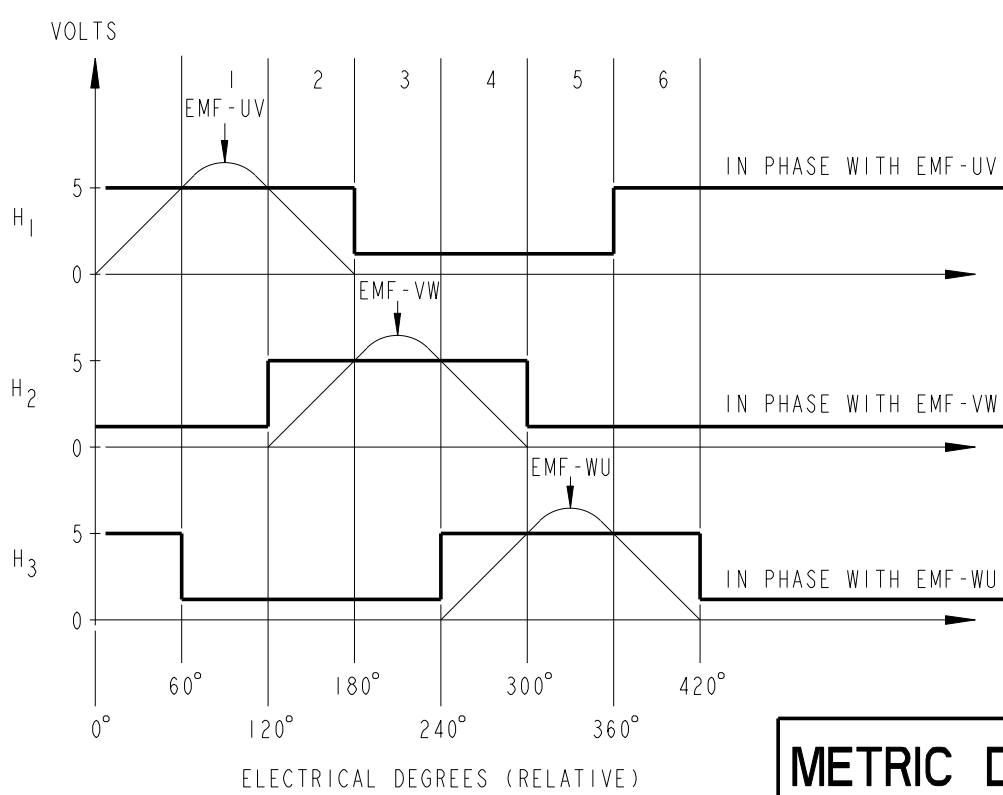
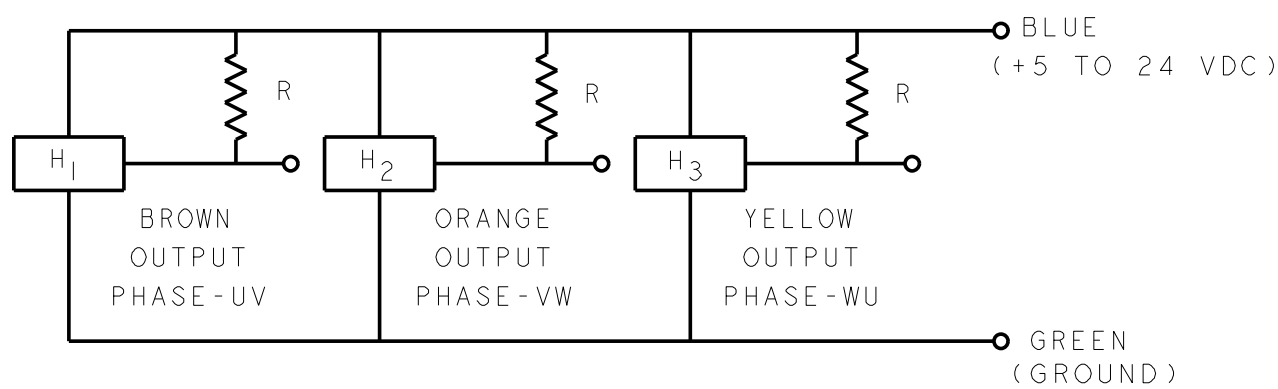
MOTOR LEADS:
 #14 AWG TEFLON COATED PER UL 10086, 400.00 [15.75"] MIN. LG. EACH 1-BLUE, 1-BROWN, 1-VIOLET

THERMISTOR LEADS:
 #26 AWG TEFLON COATED UL RATED 600V, 150°C MIN, 400.00 [15.75"] MIN. LG. EACH 1-BLUE, 1-BLACK

| REVISION | | | | | |
|----------|-----------|-------------|-----------|----------|--|
| REV | ECN NO. | DESCRIPTION | DATE | APPROVED | |
| A | R01_14145 | SEE ECO L&T | 20-Jan-11 | LW | |
| B | R01_15188 | SEE ECO KLR | 24-Oct-12 | TKB | |
| C | R01_15204 | SEE ECO L&T | 13-Nov-12 | LW | |
| D | R01_15601 | SEE ECO ALM | 8/12/13 | KLR | |



| MODEL NUMBER | STATOR SEE BOM | FIELD ASSEMBLY | "A" DIM | "B" DIM |
|--------------|----------------|----------------|----------------|----------------|
| KBMS-45X01 | 945906/01X | 945901/01 | 107.06 [4.215] | 92.41 [3.638] |
| KBMS-45X02 | 945906/02X | 945901/02 | 141.06 [5.554] | 126.29 [4.972] |
| KBMS-45X03 | 945906/03X | 945901/03 | 175.05 [6.892] | 160.17 [6.306] |



| STEP | PHASE "U" BLUE | PHASE "V" BROWN | PHASE "W" VIOLET |
|------|----------------|-----------------|------------------|
| 1 | (+) | (-) | |
| 2 | (+) | | (-) |
| 3 | | (+) | (-) |
| 4 | (-) | (+) | |
| 5 | (-) | | (+) |
| 6 | | (-) | (+) |

EXCITATION SEQUENCE TABLE

SECTION A-A

SENSOR OUTPUT
CCW VIEWED LEAD END

METRIC DRAWING

- SIGNIFICANT PRODUCT CHARACTERISTIC
- CRITICAL PRODUCT CHARACTERISTIC

| 3 | AR | IM-2709 | MARKING PROCEDURE |
|---|-----|--|--------------------------|
| 2 | I | SEE TABLE 1 | FIELD ASSEMBLY |
| 1 | I | SEE BOM | STATOR & SENSOR ASSEMBLY |
| ITEM | QTY | IDENTIFYING NO. | DESCRIPTION |
| LIST OF PARTS | | | |
| UNLESS OTHERWISE SPECIFIED: REMOVE ALL SHARP BURRS AND BREAK ALL SHARP EDGES X DECIMAL PLACES ±.4 [.015] XX DECIMAL PLACES ±.13 [.0051] ANGULAR DIMENSIONS ±1° | | KOLIMORGEN Inland Motor INLAND MOTOR 501 FIRST STREET RADFORD, VIRGINIA 24141 | |
| DO NOT SCALE DRAWING. USE DIMENSIONS ONLY ALL DIMENSIONS ARE IN MILLIMETERS DIMENSIONS IN BRACKETS [] ARE IN INCHES AND ARE FOR REFERENCE ONLY. | | OUTLINE AND ASSEMBLY KBMS-45XXX-X00 FSCM 11384 SIZE C DWG. NO. 945907 REV D | |
| INTERPRET GEOMETRIC SYMBOLS PER ANSI Y14.5M-1982 | | SCALE: 1:2 | JOB NO.: SHEET 1 OF 1 |

THIS DOCUMENT IS ONLY FOR USE BY THE INTENDED RECIPIENT AND CONTAINS KOLLMORGEN CONFIDENTIAL INFORMATION

| | |
|----------------------|-------------------|
| Pro/E Instance Name | KBMS_45XXX_945907 |
| Pro/E Drawing Name | 945907 |
| Pro/E Model Type | ASSEM |
| Pro/Engineer Drawing | |