

REVISION				
REV	ECN NO.	DESCRIPTION	DATE	APPROVED
A	001.14370	SEE ECO L&T	07-Apr-11	LW

- NOTES:
- FOR A C.C.W. ROTATION, AS VIEWED FROM LEAD END, ENERGIZE PER EXCITATION SEQUENCE BELOW.
  - MOTOR SUPPLIED AS TWO SEPARATE COMPONENTS, ARMATURE & SENSOR ASSEMBLY AND FIELD ASSEMBLY.
  - R = 1.5 KOHMS APPROXIMATELY (CUSTOMER SUPPLIED).
  - EMF-UV, EMF-VW AND EMF-WU IS BACK EMF OF MOTOR PHASES UV, VW, AND WU ALIGNED WITH SENSOR OUTPUT SHOWN FOR CCW ROTATION ONLY.
  - MINIMUM MOUNTING SURFACE FROM 154.68MM [6.090"] TO 159.76MM [6.290"] BOTH SIDES.
  - DIMENSIONS IN BRACKETS ( ) ARE ENGLISH UNITS FOR REFERENCE ONLY.
  - NO ANGULAR RELATIONSHIP BETWEEN MOUNTING HOLES ON EITHER SIDE OF ROTOR.
  - RoHS (DIRECTIVE 2002/95/EC AND AMMENDMENTS) COMPLIANCE REQUIRED.

- MOTOR LEADS:  
 #16 AWG, TEFLON INSULATED, U.L.1199  
 3 LEADS, 400mm [15.75"] MIN.  
 1-BLUE 1-BROWN 1-VIOLET
- THERMISTOR LEADS:  
 #26 AWG, TEFLON INSULATED  
 2 LEADS, 400mm [15.75"] MIN.  
 1-BLUE 1-RED
- SENSOR LEADS:  
 #26 AWG TEFLON COATED PER MIL-W-22759/11  
 5 LEADS, 400mm [15.75"] MIN.  
 1-BLUE 1-GREEN 1-BROWN 1-ORANGE 1-YELLOW

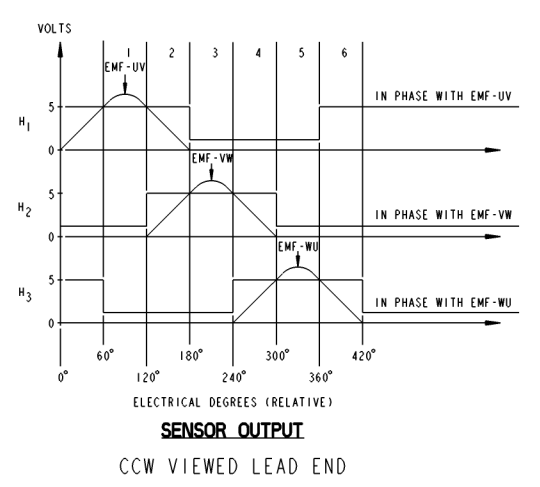
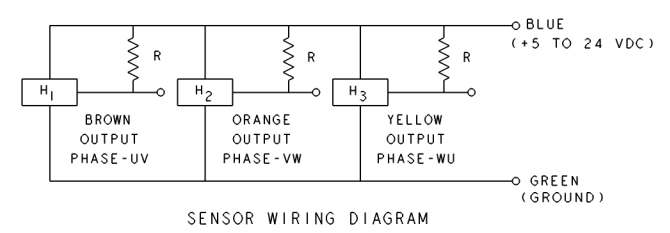
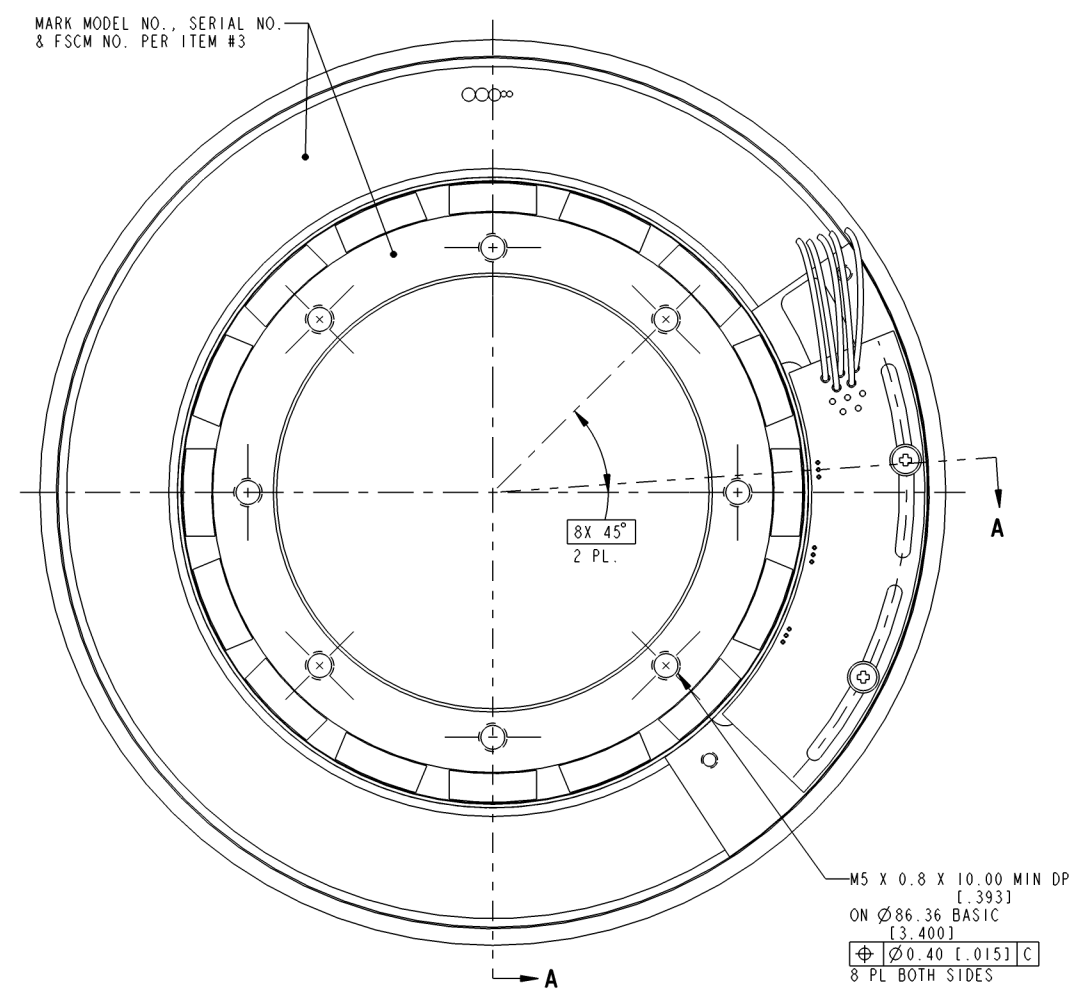
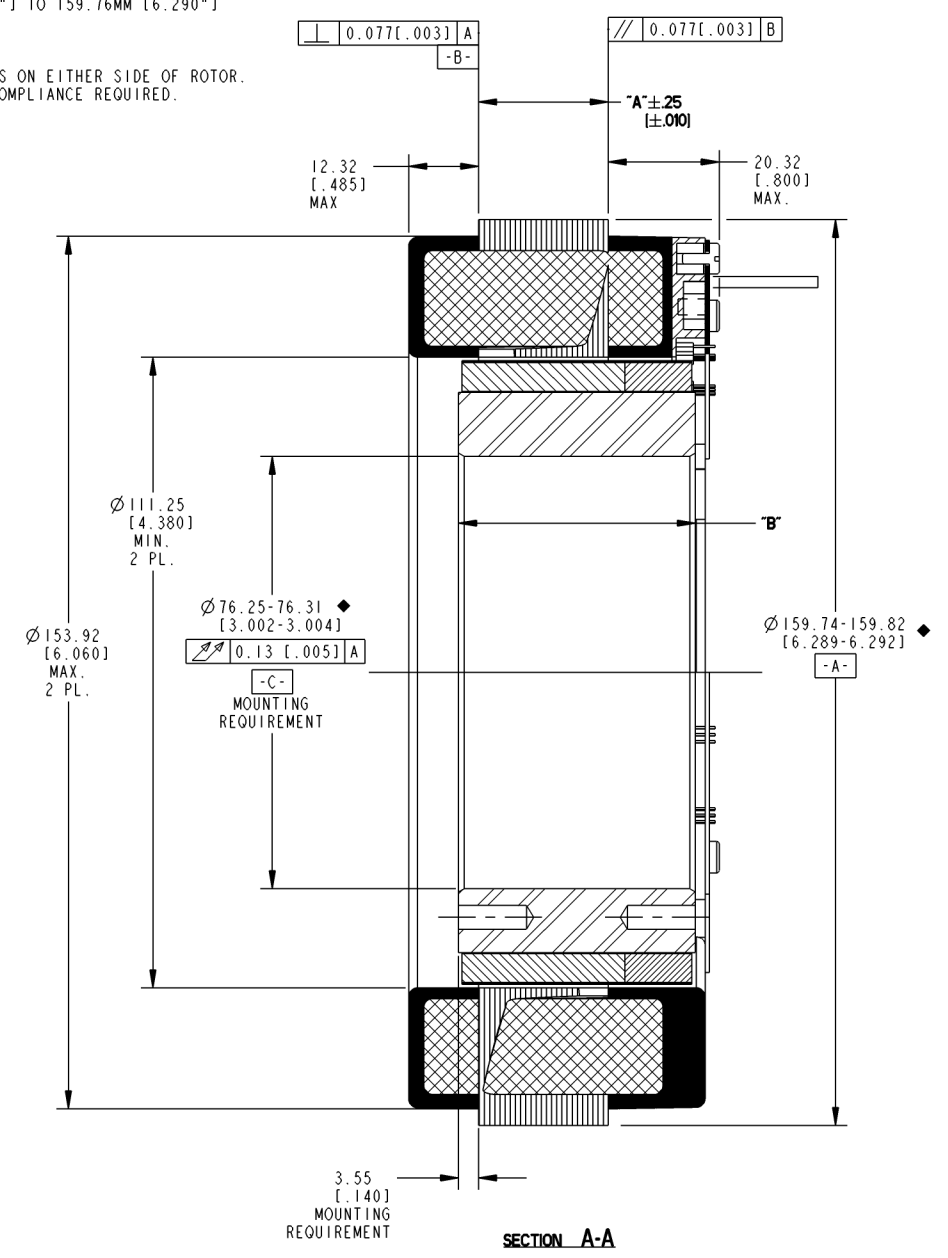


TABLE 1

MODEL NUMBER	ARMATURE ASSY HV. INSULATION	ARMATURE ASSY STD. INSULATION	FIELD ASSEMBLY	DIM "A"	DIM "B"
KBMS-43X01	946395/01X	946396/01X	946397/01	11.43 [0.450]	30.35 [1.195]
KBMS-43X02	946395/02X	946396/02X	946397/02	22.86 [0.900]	41.78 [1.645]
KBMS-43X03	946395/03X	946396/03X	946397/03	45.72 [1.800]	64.64 [2.545]
KBMS-43X04	946395/04X	946396/04X	946397/04	80.26 [3.160]	99.19 [3.905]
KBMS-43X05	946395/05X	946396/05X	946397/05	108.97 [4.290]	127.89 [5.035]

POWER CONNECTION

STEP	PHASE "U" BLUE	PHASE "V" BROWN	PHASE "W" VIOLET
1	(+)	(-)	(-)
2	(+)	(-)	(+)
3	(-)	(+)	(-)
4	(-)	(+)	(+)
5	(-)	(-)	(+)
6	(+)	(-)	(+)

EXCITATION SEQUENCE TABLE

3	AR	IM-2709	MARKING PROCEDURE
2	I	SEE TABLE	ARMATURE AND SENSOR ASSEMBLY
1	I	SEE TABLE	FIELD ASSEMBLY

ITEM QTY IDENTIFYING NO. DESCRIPTION

LIST OF PARTS

KOLLMORGEN		INLAND MOTOR	
Inland Motor		501 FIRST STREET RADFORD, VIRGINIA 24141	
OUTLINE			
KBMS-43XXX-X00			
FSCM	SIZE	DWG. NO.	REV
11384	D	946394	A
SCALE: 1:000	JOB NO.:	SHEET 1 OF 1	

THIS DOCUMENT IS FOR THE INTENDED RECIPIENT AND CONTAINS KOLLMORGEN CONFIDENTIAL INFORMATION

ProfE Instance Name: KBMS43X01.946394  
 ProfE Drawing Name: 946394  
 ProfE Model Type: ASSEM  
 Pro/Engineer Drawing