

NOTES:

- 1- MOTOR SUPPLIED AS TWO SEPERATE COMPONENTS, STATOR & SENSOR ASSEMBLY AND FIELD ASSEMBLY.
- 2- FOR A C.C.W. ROTATION, AS VIEWED FROM LEAD END, ENERGIZE PER EXCITATION SEQUENCE TABLE.
- 3- R= 1.5K OHMS APPROX. (CUSTOMER SUPPLIED)
- 4- EMF-UV, EMF-VW AND EMF-WU IS BACK EMF OF MOTOR PHASES UV, VW, AND WU RESPECTIVELY, ALIGNED WITH SENSOR OUTPUT AS SHOWN FOR C.C.W. ROTATION ONLY.
- 5- SENSORS SET FOR BI-DIRECTIONAL ROTATION
- 6- ROHS AND REACH COMPLIANCE REQUIRED IN ACCORDANCE WITH KOLLMORGEN PRODUCT ENVIRONMENTAL COMPLIANCE SPECIFICATION, 960303, IN ITS LATEST REVISION.

SENSOR LEADS:

#26 AWG TEFLON COATED PER MIL-W-22759/11, 400.00 [15.75"] MIN. LG. EACH 1-BLUE, 1-ORANGE, 1-BROWN, 1-GREEN, 1-YELLOW

MOTOR LEADS:

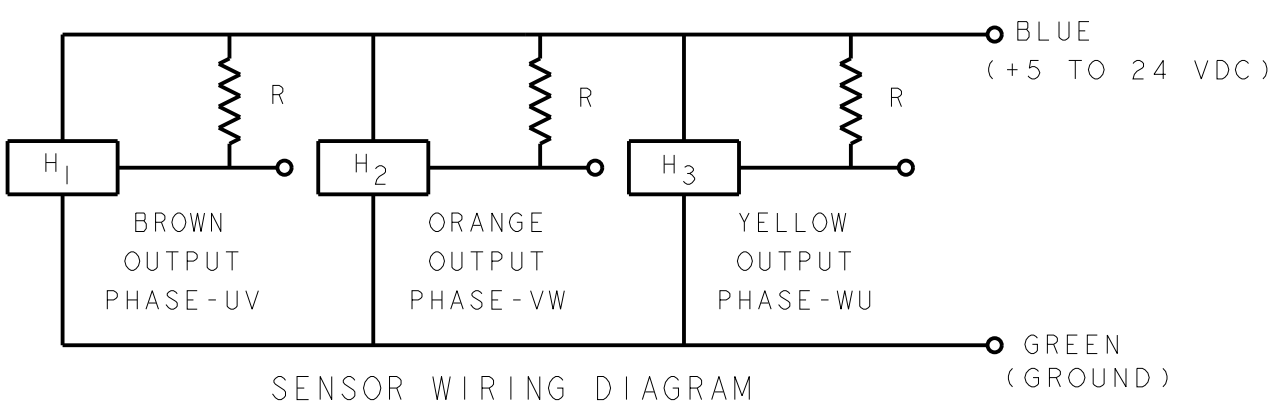
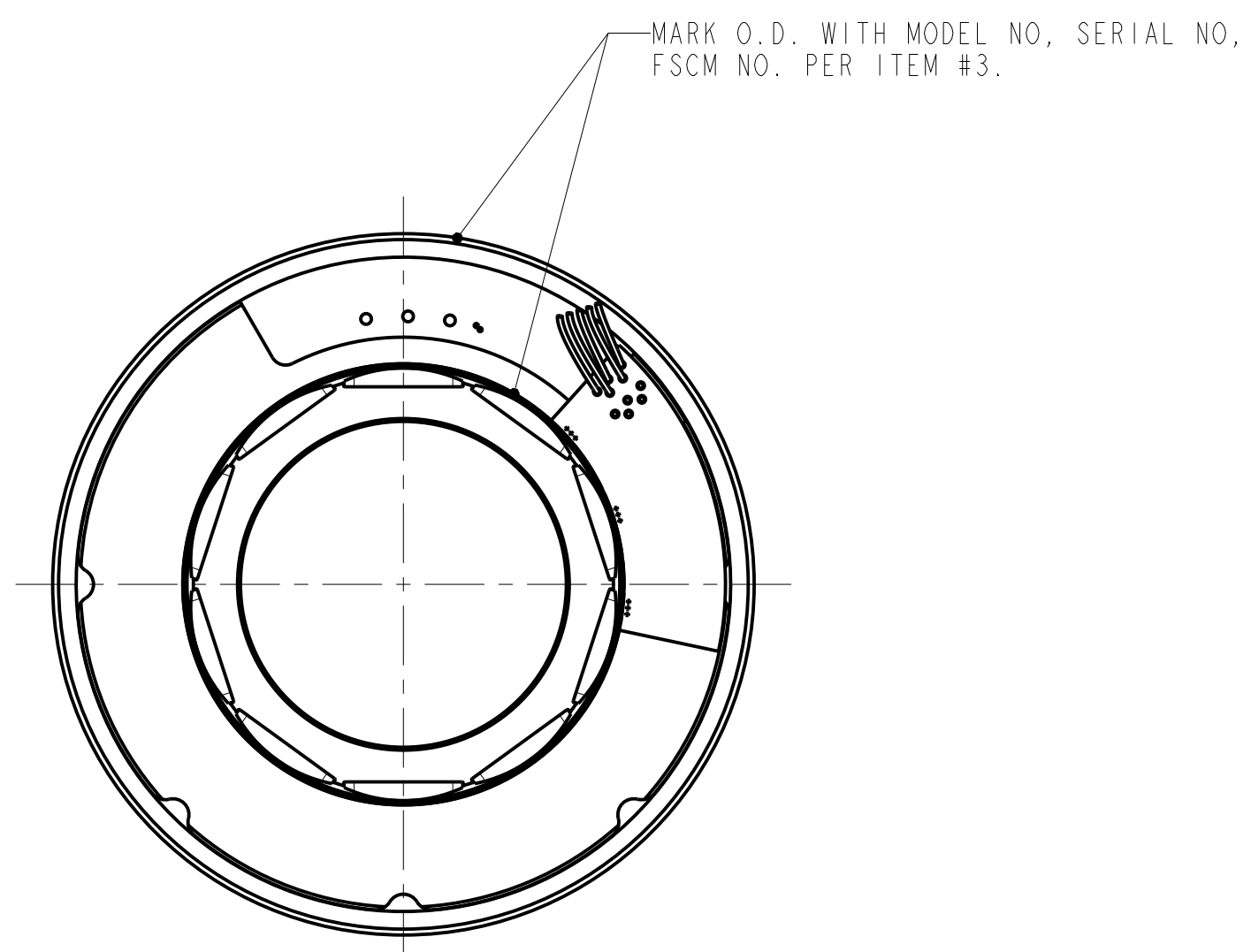
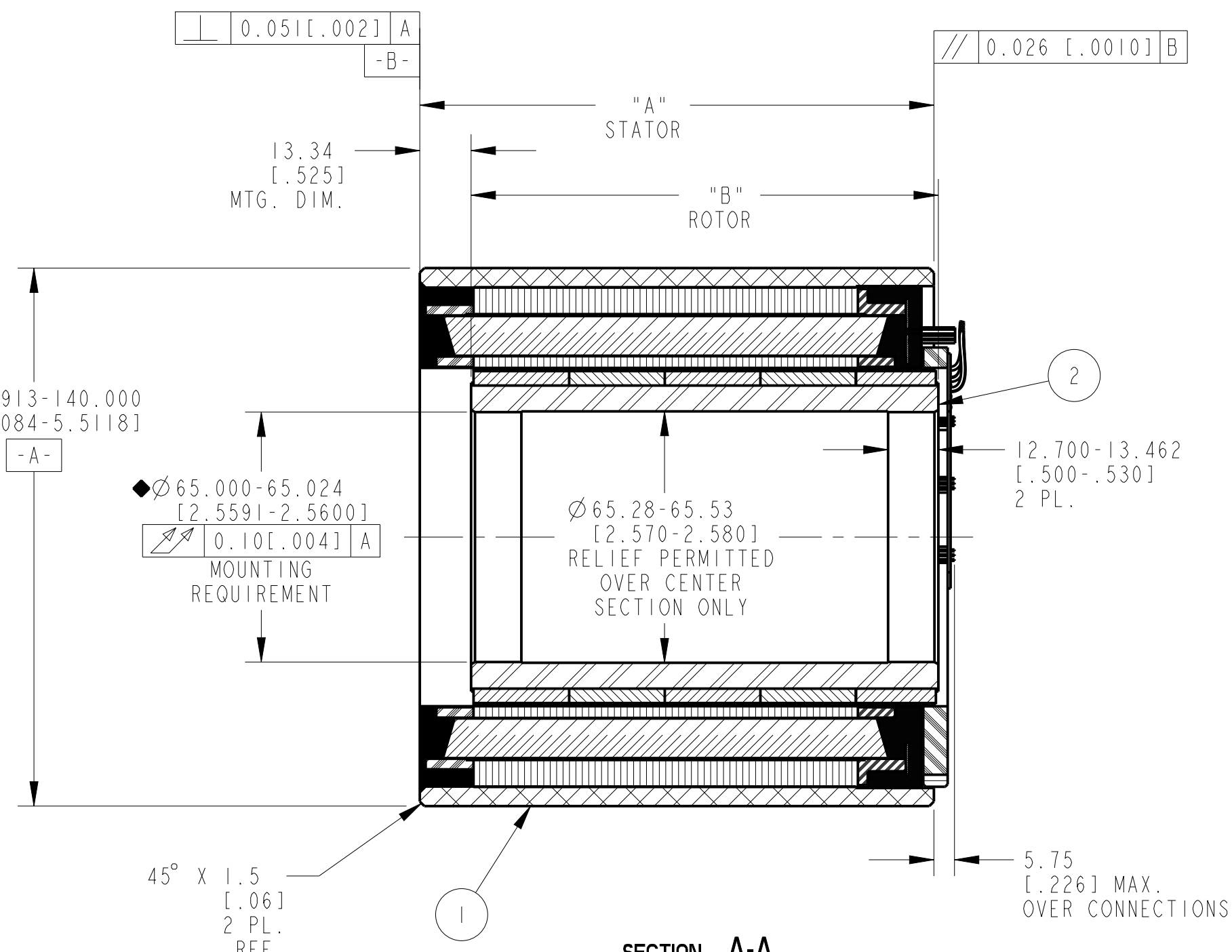
#14 AWG TEFLON COATED PER UL 10086, 400.00 [15.75"] MIN. LG. EACH 1-BLUE, 1-BROWN, 1-VIOLET

THERMISTOR LEADS:

#26 AWG TEFLON COATED UL RATED 600V, 150°C MIN, 400.00 [15.75"] MIN. LG. EACH 1-BLUE, 1-BLACK

REVISION

REV	ECN NO.	DESCRIPTION	DATE	APPROVED
A	R01_14145	SEE ECO	L&T 20-Jan-11	LW
B	R01_15266	SEE ECO	KLR 17-Jan-13	LW
C	R01_15601	SEE ECO	ALM 8/12/13	KLR
D	R01_17048	SEE ECO	ALM 6/30/15	MAS



SECTION A-A

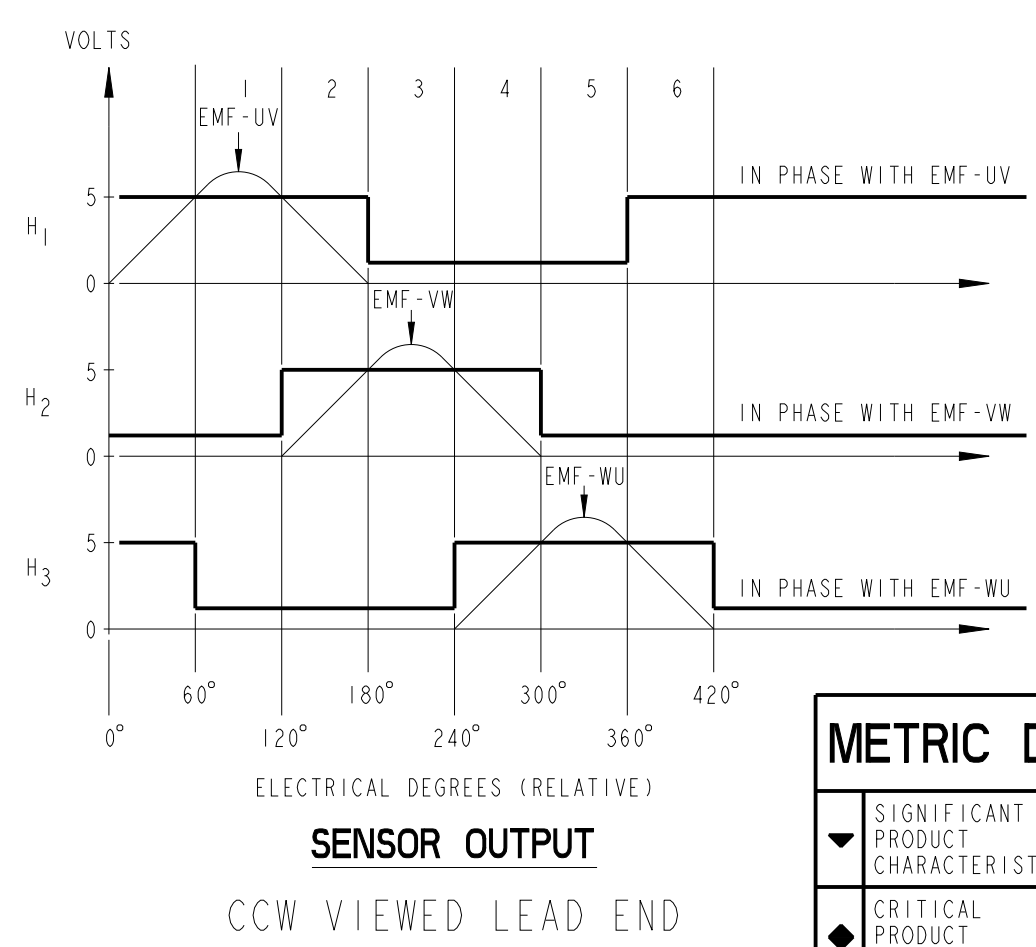


TABLE 1

MODEL NUMBER	STATOR SEE BOM	FIELD ASSEMBLY	"A" DIM	"B" DIM
KBMS-35X01	945892/01X	945887/01	83.74 [3.297]	71.83 [2.828]
KBMS-35X02	945892/02X	945887/02	108.74 [4.281]	96.70 [3.807]
KBMS-35X03	945892/03X	945887/03	133.740 [5.2654]	121.56 [4.786]
KBMS-35X04	945892/04X	945887/04	158.740 [6.2496]	146.43 [5.765]

THIS DOCUMENT IS ONLY FOR USE BY THE INTENDED RECIPIENT AND CONTAINS KOLLMORGEN CONFIDENTIAL INFORMATION

Pro/E Instance Name: KBMS_35XXX_945893
 Pro/E Drawing Name: 945893
 Pro/E Model Type: ASSEM
 Pro/Engineer Drawing

POWER CONNECTION

STEP	PHASE "U" BLUE	PHASE "V" BROWN	PHASE "W" VIOLET
1	(+)	(-)	
2	(+)		(-)
3		(+)	(-)
4	(-)	(+)	
5	(-)		(+)
6		(-)	(+)

EXCITATION SEQUENCE TABLE

METRIC DRAWING

SIGNIFICANT PRODUCT CHARACTERISTIC
 CRITICAL PRODUCT CHARACTERISTIC

ITEM	QTY	IDENTIFYING NO.	DESCRIPTION
3	AR	IM-2709	MARKING PROCEDURE
2	I	SEE TABLE 1	FIELD ASSEMBLY
1	I	SEE BOM	STATOR & SENSOR ASSEMBLY

LIST OF PARTS

KOLLMORGEN		501 MAIN STREET RADFORD, VIRGINIA 24141	
OUTLINE AND ASSEMBLY KBMS-35XXX-X00			
DO NOT SCALE DRAWING. USE DIMENSIONS ONLY. ALL DIMENSIONS ARE IN MILLIMETERS. DIMENSIONS IN BRACKETS () ARE IN INCHES AND ARE FOR REFERENCE ONLY.	DATE: Jun-30-15	FSCM: 11384	SIZE: C
INTERPRET GEOMETRIC SYMBOLS PER ANSI Y14.5M-1982	DATE: 17-Sep-09	DWG. NO.: 945893	REV: D
SCALE: 0.750	JOB NO.:	SHEET 1 OF 1	