

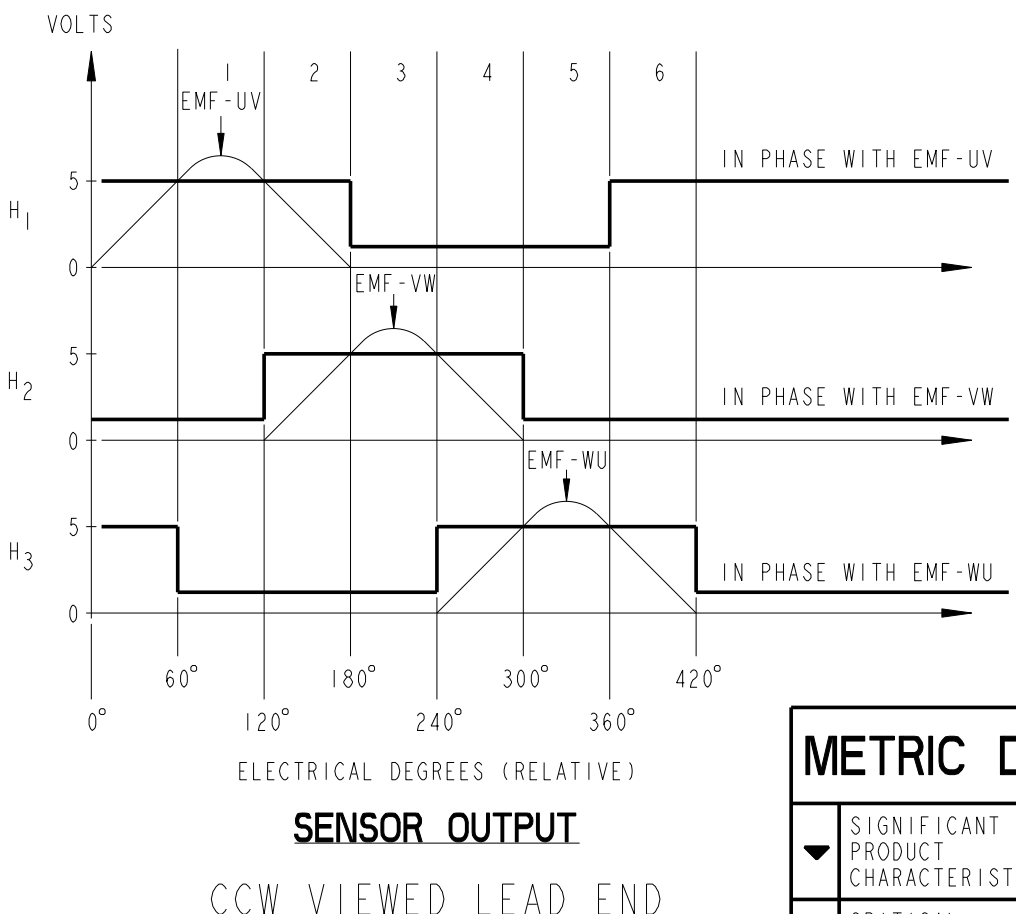
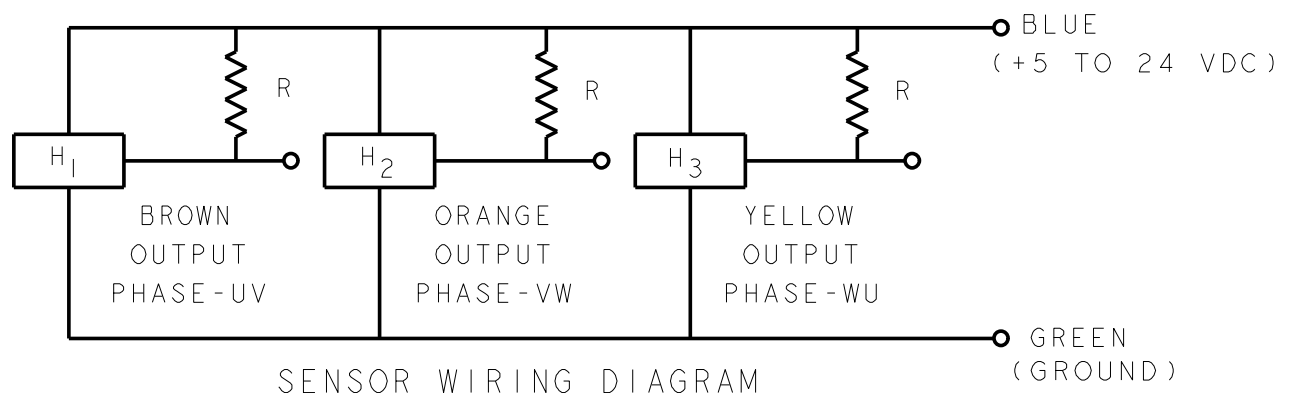
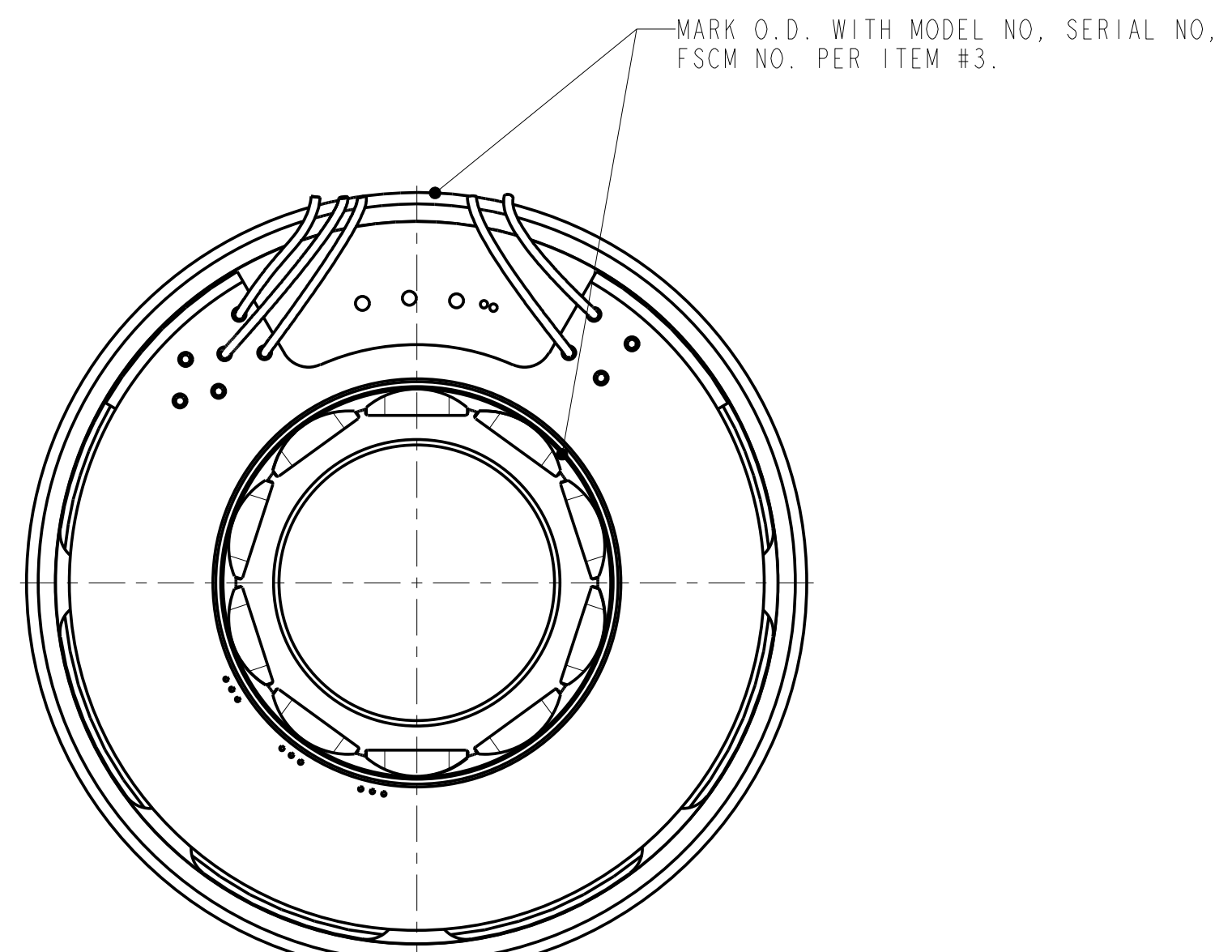
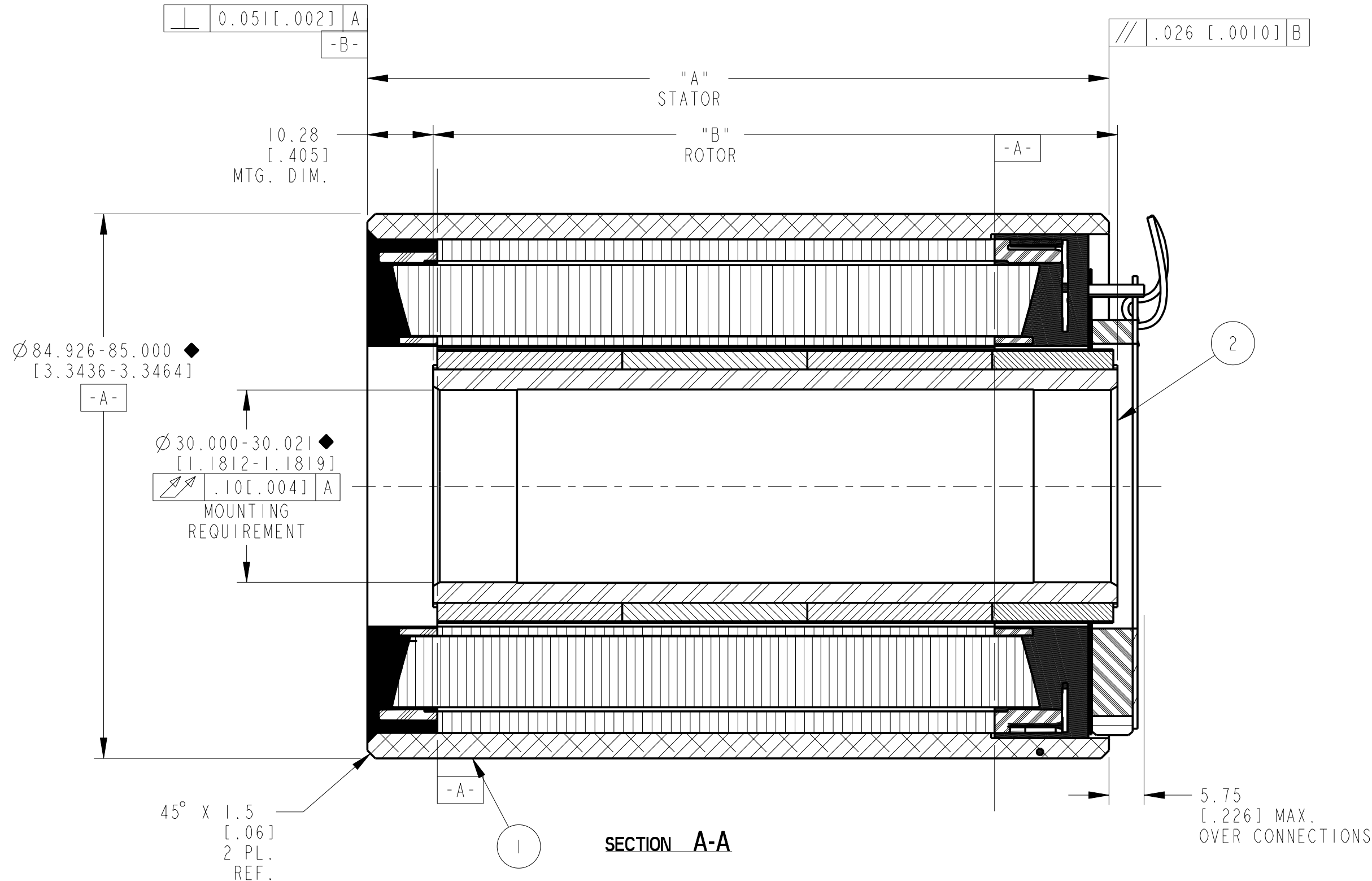
- NOTES:
- 1- MOTOR SUPPLIED AS TWO SEPERATE COMPONENTS, STATOR & SENSOR ASSEMBLY AND FIELD ASSEMBLY.
 - 2- FOR A C.C.W. ROTATION, AS VIEWED FROM LEAD END, ENERGIZE PER EXCITATION SEQUENCE TABLE.
 - 3- R= 1.5K OHMS APPROX. (CUSTOMER SUPPLIED)
 - 4- EMF-UV, EMF-VW AND EMF-WU IS BACK EMF OF MOTOR PHASES UV, VW, AND WU RESPECTIVELY, ALIGNED WITH SENSOR OUTPUT AS SHOWN FOR C.C.W. ROTATION ONLY.
 - 5- SENSORS SET FOR BI-DIRECTIONAL ROTATION
 - 6- RoHS (DIRECTIVE 2002/95/EC AND AMMENDMENTS) COMPLIANCE REQUIRED.

SENSOR LEADS:
 #26 AWG TEFLON COATED PER MIL-W-22759/11, 400.00 [15.75"] MIN. LG. EACH 1-BLUE, 1-ORANGE, 1-BROWN, 1-GREEN, 1-YELLOW

MOTOR LEADS:
 #18 AWG TEFLON COATED PER UL 10086, 400.00 [15.75"] MIN. LG. EACH 1-BLUE, 1-BROWN, 1-VIOLET

THERMISTOR LEADS:
 #26 AWG TEFLON COATED UL RATED 600V, 150°C MIN, 400.00 [15.75"] MIN. LG. EACH 1-BLUE, 1-BLACK

REVISION					
REV	ECN NO.	DESCRIPTION	DATE	APPROVED	
A	R01_13676	SEE ECO	L&T	28-Jul-10	LW
B	R01_14145	SEE ECO	L&T	20-Jan-11	LW
C	R01_15266	SEE ECO	KLR	17-Jan-13	LW
D	R01_15601	SEE ECO	ALM	8/12/13	KLR



MODEL NUMBER	STATOR SEE BOM	FIELD ASSEMBLY	"A" DIM	"B" DIM
KBMS-17X01	945819/01X	945814/01	57.80 [2.276]	49.07 [1.932]
KBMS-17X02	945819/02X	945814/02	86.80 [3.417]	77.95 [3.069]
KBMS-17X03	945819/03X	945814/03	115.80 [4.559]	106.83 [4.206]
KBMS-17X04	945819/04X	945814/04	144.80 [5.701]	135.71 [5.343]

THIS DOCUMENT IS ONLY FOR USE BY THE INTENDED RECIPIENT AND CONTAINS KOLLMORGEN CONFIDENTIAL INFORMATION

Pro/E Instance Name: KBMS_17XXX_945820
 Pro/E Drawing Name: 945820
 Pro/E Model Type: ASSEM
 Pro/Engineer Drawing

STEP	PHASE "U" BLUE	PHASE "V" BROWN	PHASE "W" VIOLET
1	(+)	(-)	
2	(+)		(-)
3		(+)	(-)
4	(-)	(+)	
5	(-)		(+)
6		(-)	(+)

METRIC DRAWING

SIGNIFICANT PRODUCT CHARACTERISTIC

CRITICAL PRODUCT CHARACTERISTIC

3	AR	IM-2709	MARKING PROCEDURE
2	I	956597	FIELD ASSEMBLY
1	I	SEE BOM	STATOR & SENSOR ASSEMBLY
ITEM	QTY	IDENTIFYING NO.	DESCRIPTION
LIST OF PARTS			
UNLESS OTHERWISE SPECIFIED: REMOVE ALL SHARP BURRS AND BREAK ALL SHARP EDGES X DECIMAL PLACES ±.4 [.015] XX DECIMAL PLACES ±.13 [.005] ANGULAR DIMENSIONS ±1°		KOLLMORGEN Inland Motor	
DO NOT SCALE DRAWING. USE DIMENSIONS ONLY ALL DIMENSIONS ARE IN MILLIMETERS DIMENSIONS IN BRACKETS [] ARE IN INCHES AND ARE FOR REFERENCE ONLY.		INLAND MOTOR 501 FIRST STREET RADFORD, VIRGINIA 24141	
INTERPRET GEOMETRIC SYMBOLS PER ANSI Y14.5M-1982		OUTLINE AND ASSEMBLY KBMS-17XXX-X00	
DATE: 03-Apr-09 L&T	DATE: 18-Sep-09 LW	FSCM: 11384	SIZE: C
DATE: 18-Sep-09 AG	DATE: 18-Sep-09	DWG. NO.: 945820	REV: D
SCALE: 3:2		JOB NO.:	SHEET 1 OF 1

REV D
C
D
945820
A