

NOTES:

- FOR A CCW ROTATION, AS VIEWED FROM LEAD END, ENERGIZE PER EXCITATION SEQUENCE BELOW.
- MOTOR SUPPLIED AS TWO SEPARATE COMPONENTS, ARMATURE ASSEMBLY AND FIELD ASSEMBLY.
- MINIMUM MOUNTING SURFACE FROM 318.77 [12.55] TO 331.47 [13.050] BOTH SIDES.
- DIMENSIONS IN BRACKETS [] ARE ENGLISH UNITS FOR REFERENCE ONLY.
- NO ANGULAR RELATIONSHIP BETWEEN MOUNTING HOLES ON EITHER SIDE OF ROTOR.
- RoHS (DIRECTIVE 2002/95/EC AND AMMENDMENTS) COMPLIANCE REQUIRED.

MOTOR LEADS:
 #12 AWG, TEFLON INSULATED, U.L. 1199
 3 LEADS, 400 MM [15.75"] MIN
 1- BLUE 1- BROWN 1- VIOLET

THERMISTOR LEADS:
 #26 AWG, TEFLON INSULATED
 2 LEADS, 400 MM [15.75"] MIN
 1- BLUE 1- RED

REVISION				
REV	ECN NO.	DESCRIPTION	DATE	APPROVED
A	R01.14145	SEE ECO L&T	20-Jan-11	LW
B	R01.14436	SEE ECO L&T	16-May-11	LW

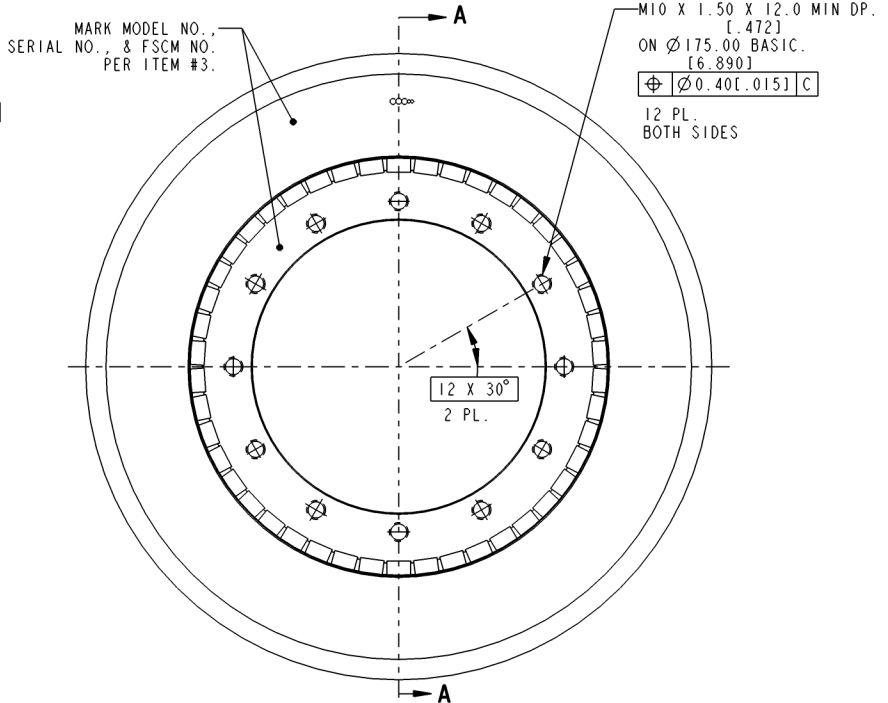
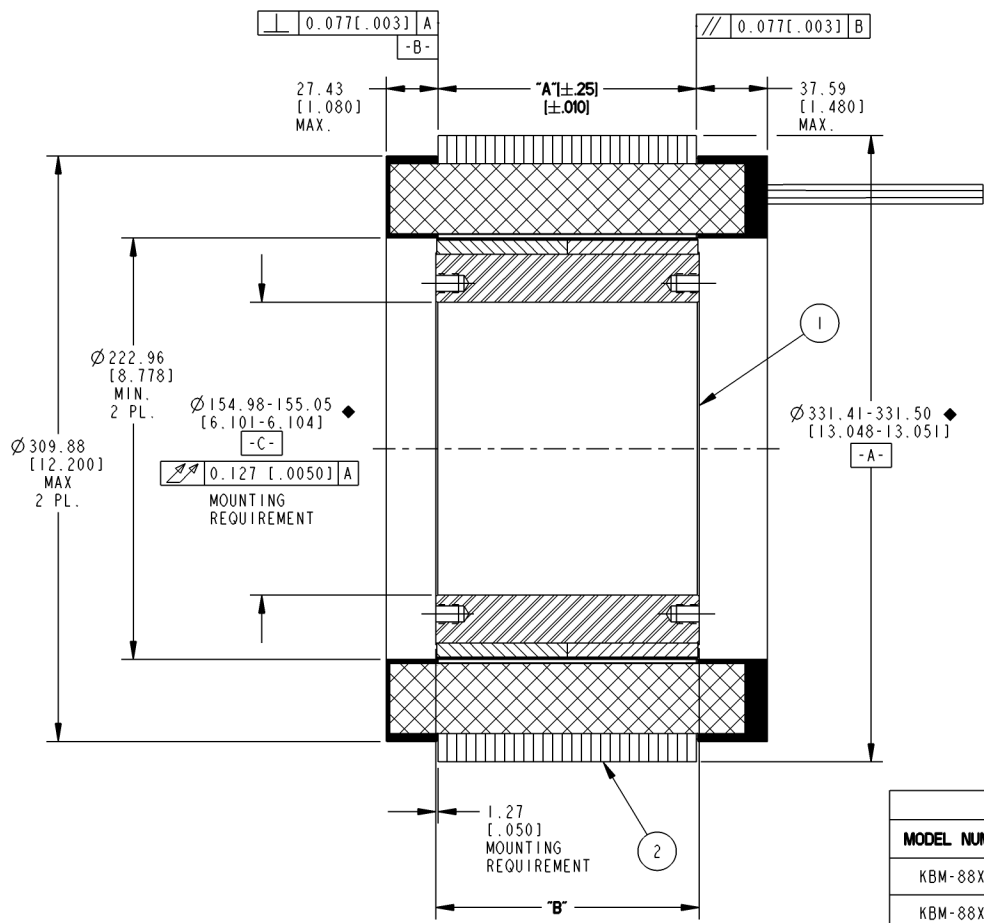


TABLE - 1

MODEL NUMBER	ARMATURE ASSY H.V. INSULATION	ARMATURE ASSY STD. INSULATION	FIELD ASSY	DIM "A"	DIM "B"
KBM-88X00	946201/00X	946202/00X	946203/00	33.66 [1.325]	36.37 [1.432]
KBM-88X01	946201/01X	946202/01X	946203/01	67.56 [2.660]	70.36 [2.770]
KBM-88X02	946201/02X	946202/02X	946203/02	136.65 [5.380]	139.44 [5.490]
KBM-88X03	946201/03X	946202/03X	946203/03	205.74 [8.100]	208.53 [8.210]

POWER CONNECTION

STEP	PHASE "U" BLUE	PHASE "V" BROWN	PHASE "W" VIOLET
1	+	-	-
2	+	-	-
3	-	+	-
4	-	+	-
5	-	-	+
6	-	-	+

EXCITATION SEQUENCE TABLE

THIS DOCUMENT IS ONLY FOR USE BY THE INTENDED RECIPIENT AND CONTAINS KOLLMORGEN CONFIDENTIAL INFORMATION

Prof Instance Name: KOLLMORGEN.946200
 Prof Drawing Name: 946200
 Prof Model Type: ASSEM
Pro/Engineer Drawing

3	AR	IM-2709	MARKING PROCEDURE
2	I	SEE TABLE	ARMATURE ASSY
1	I	SEE TABLE	FIELD ASSEMBLY
ITEM	QTY	IDENTIFYING NO.	DESCRIPTION

LIST OF PARTS

KOLLMORGEN
 Inland Motor

INLAND MOTOR
 501 FIRST STREET
 RADFORD, VIRGINIA 24141

OUTLINE
 KBM-88XXX-X00

DO NOT SCALE DRAWING. USE DIMENSIONS ONLY. ALL DIMENSIONS ARE IN MILLIMETERS UNLESS OTHERWISE SPECIFIED. REMOVE ALL SHARP BURRS AND BREAK ALL SHARP EDGES. X DECIMAL PLACES ± 4 [0.015] XX DECIMAL PLACES ± 13 [0.005] ANGULAR DIMENSIONS ± 1'

DO NOT SCALE DRAWING. USE DIMENSIONS ONLY. ALL DIMENSIONS ARE IN INCHES UNLESS OTHERWISE SPECIFIED. DIMENSIONS IN BRACKETS [] ARE IN INCHES AND ARE FOR REFERENCE ONLY.

INTERPRET GEOMETRIC SYMBOLS PER ANSI Y14.5M-1992

REV	FSCM	SIZE	DWG. NO.	REV
	11384	C	946200	B

SCALE: .500 JOB NO.: SHEET 1 OF 1

METRIC DRAWING

SIGNIFICANT PRODUCT CHARACTERISTIC

CRITICAL PRODUCT CHARACTERISTIC

946200