

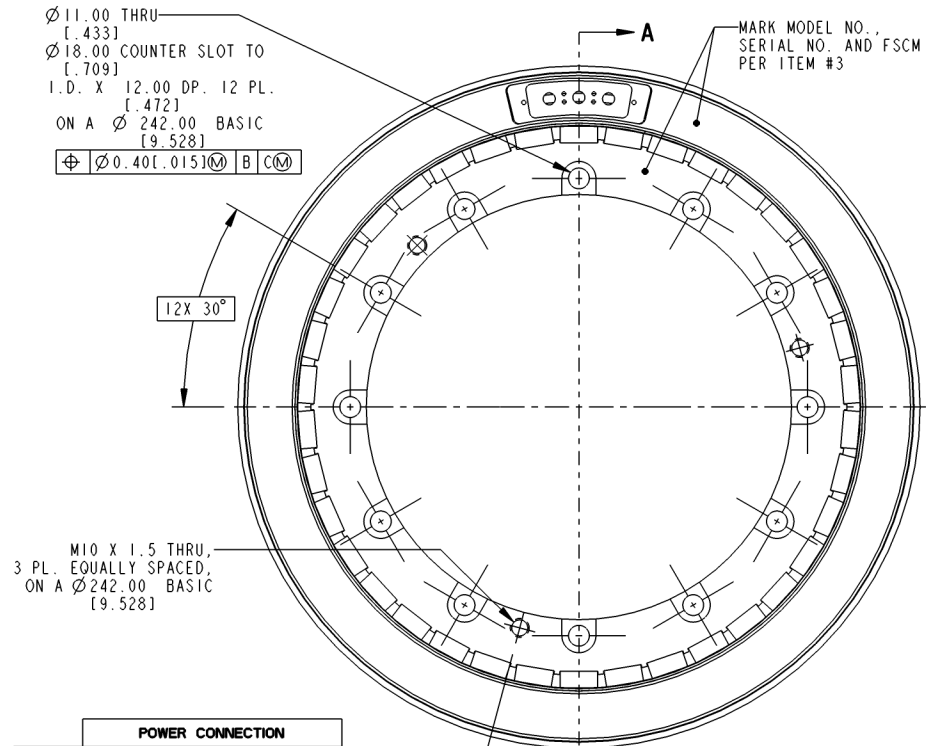
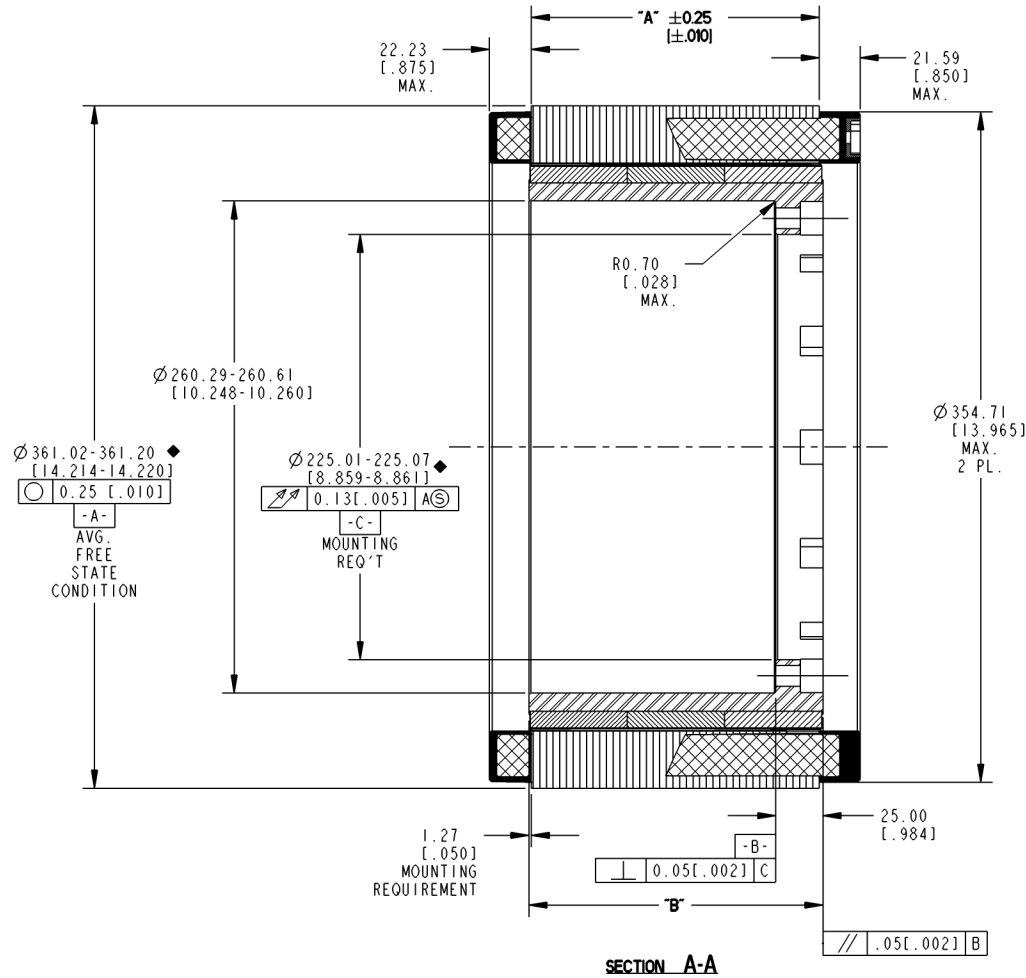
NOTES:

1. FOR A.C.C.W. ROTATION, AS VIEWED FROM LEAD END, ENERGIZE PER EXCITATION SEQUENCE BELOW.
2. MOTOR SUPPLIED AS TWO SEPARATE COMPONENTS, ARMATURE ASSEMBLY, AND FIELD ASSEMBLY.
3. RECOMMENDED MOUNTING: O.D. SHRINK FIT.
4. DIMENSIONS IN BRACKETS [] ARE ENGLISH UNITS FOR REFERENCE ONLY.
5. RoHS (DIRECTIVE 2002/95/EC AND AMENDMENTS) COMPLIANCE REQUIRED.

MOTOR LEADS:
 #10 AWG, TEFLON INSULATED, U.L.1199
 3 LEADS, 900 mm [35"] MIN
 1- BLUE 1- BROWN 1- VIOLET

THERMISTOR LEADS:
 #26 AWG, TEFLON INSULATED
 4 LEADS, 900 mm [35"] MIN
 2 - BLUE 2 - RED

REVISION					
REV	ECN NO.	DESCRIPTION	DATE	APPROVED	
A	R01.13452	SEE ECO	HLW	3-05-2010	TRB
B	R01.14448	SEE ECO	L&T	19-May-11	LW



STEP	POWER CONNECTION		
	PHASE "U" BLUE	PHASE "V" BROWN	PHASE "W" VIOLET
1	(+)	(-)	(-)
2	(+)	(-)	(-)
3	(+)	(+)	(-)
4	(-)	(+)	(-)
5	(-)	(+)	(+)
6	(-)	(-)	(+)

EXCITATION SEQUENCE TABLE

MODEL NUMBER	ARMATURE ASSY H.V. INSULATION	ARMATURE ASSY STD. INSULATION	FIELD ASSEMBLY	DIM "A"	DIM "B"
KBM-118X00	946259/00X	946260/00X	946261/00	50.80 [2.000]	52.71 [2.075]
KBM-118X01	946259/01X	946260/01X	946261/01	101.60 [4.000]	104.14 [4.100]
KBM-118X02	946259/02X	946260/02X	946261/02	152.40 [6.000]	155.58 [6.125]
KBM-118X03	946259/03X	946260/03X	946261/03	203.20 [8.000]	207.26 [8.160]
KBM-118X04	946259/04X	946260/04X	946261/04	254.00 [10.000]	258.69 [10.185]

THIS DOCUMENT IS ONLY FOR USE BY THE INTENDED RECIPIENT AND CONTAINS KOLLMORGEN CONFIDENTIAL INFORMATION

Pro/E Instance Name: KBM118.00119E.146258
 Pro/E Drawing Name: 946258
 Pro/E Model Type: ASSEM
 Pro/Engineer Drawing

METRIC DRAWING

SIGNIFICANT PRODUCT CHARACTERISTIC

CRITICAL PRODUCT CHARACTERISTIC

ITEM	QTY	IDENTIFYING NO.	DESCRIPTION
3	AR	IM-2709	MARKING PROCEDURE
2	I	SEE TABLE	FIELD ASSEMBLY
1	I	SEE TABLE	ARMATURE ASSEMBLY

LIST OF PARTS		KOLLMORGEN	
Inland Motor		INLAND MOTOR 501 FIRST STREET RADFORD, VIRGINIA 24141	
OUTLINE AND ASSEMBLY KBM-118XXX-X00			
FSCM	SIZE	DWG. NO.	REV
11384	C	946258	B
SCALE: 0.500		JOB NO.:	SHEET 1 OF 1