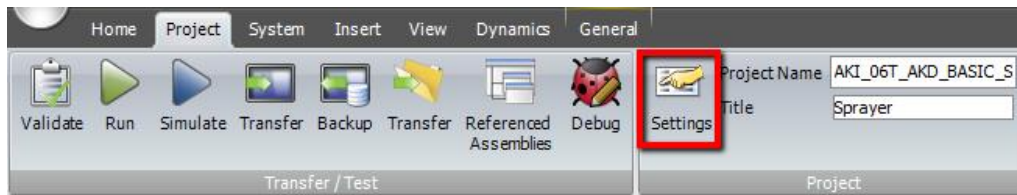


## Size Conversion of KVB Projects

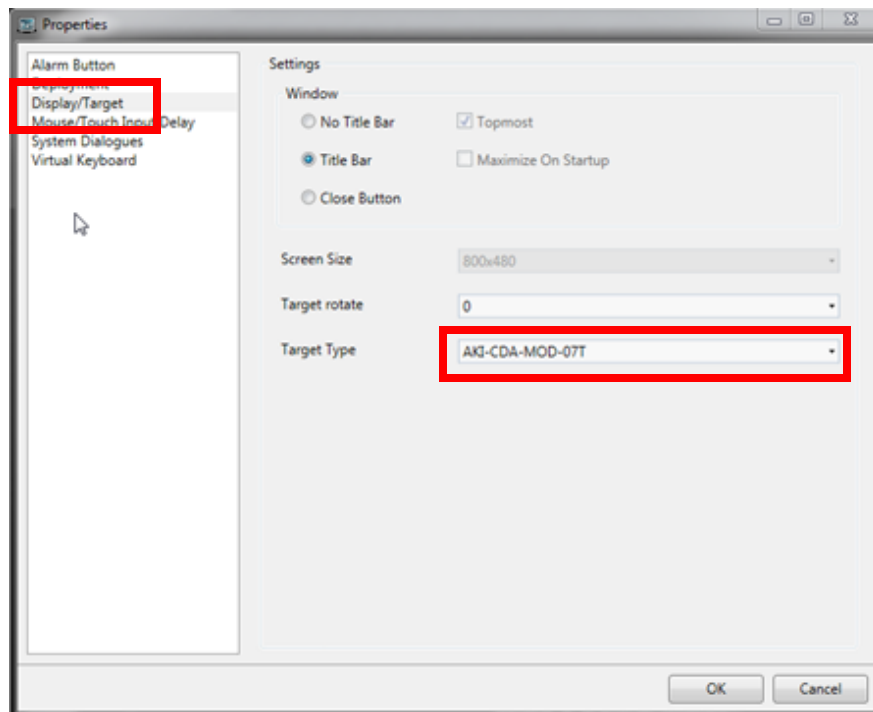
### Overview

KVB projects can be converted from one panel size to another. It is simple to do, but it is irreversible. Best practice is to do a Save-As to make a backup of the project before converting it.

1. Go to the **Project** tab and click on **Settings**.



2. Click on **Display/Panel** and select the AKI model number of the panel you want to resize to.



3. Click **Ok**.