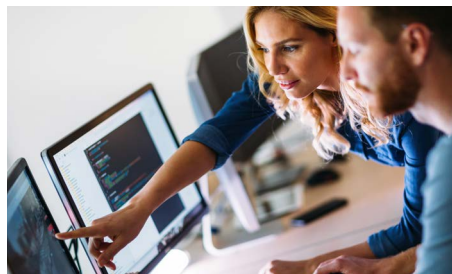


# Proven Processes, Reliable Delivery



**Kollmorgen Motion for Defense:**  
70 years of mission-critical support

**KOLLMORGEN**

A REGAL REXNORD BRAND

To win, you need a reliable partner. With more than 100 years of motion leadership, including over 70 years designing, manufacturing and supplying motion products for aerospace and defense applications, Kollmorgen delivers motors with proven reliability, from initial design through trusted service, in theaters of operation around the world.

Few business challenges are as formidable and complex as winning a defense contract. Program specifications, contractual obligations and provisioning requirements are all far more demanding than practically anything encountered in the civilian manufacturing world. Risk mitigation is crucial at every stage to hit deadlines, transition successfully from prototype to full-rate production, and keep defense customers supplied throughout the program lifecycle.

#### Why Kollmorgen

Our deep knowledge of defense applications, collaborative engineering culture, custom capabilities and sustainable manufacturing processes provide the greatest assurance of program success. We deliver the **knowledge, speed, adaptability, diligence, experience and resources** to help you design the most effective motion systems for your defense programs and ensure their long-term motion success.



#### KNOWLEDGE: INITIAL DESIGN

Kollmorgen is not a build-to-print shop. We know how to meet your performance and quality specifications with the most efficient and effective motor design, with assured manufacturability on your required scale and timeframe. We're your collaborative partner, working with your engineering team to arrive at the optimum motor for performance, reliability and cost.

**Key Milestone:**  
Joint specifications review

#### SPEED: PROTOTYPING

Our prototyping teams have decades of experience, ensuring that the motors you specify work exactly as expected, right out of the box. We can provide fast-turn prototyping for the most challenging motor requirements—typically delivering what you need within just a few weeks. And because we maintain a broad and sophisticated portfolio of commercial off-the-shelf products—plus literally thousands of proven standard modifications—what would normally be considered a custom prototype is often a standard offering for Kollmorgen.

**Key Milestone:**  
Preliminary design review

#### ADAPTABILITY: ITERATIVE DESIGN

Everything can look perfect in CAD, but upon physically constructing your prototype you will probably discover things you'd like to change or refine. We understand that, and are prepared to iterate motor designs rapidly for a perfect fit in your revised design. Adaptability is core to Kollmorgen's identity, built into all of our design and manufacturing processes.

**Key Milestone:**  
Intermediate design review

#### DILIGENCE: FINAL DESIGN

Process matters, and we follow through. Across every prototype and design phase, we work diligently to ensure that we arrive at full agreement with you on every detail of the final product before beginning full-rate production.

**Key Milestone:**  
Final design review

#### EXPERIENCE: PRODUCTION

With lean manufacturing, repeatable processes and quality controls, Kollmorgen can quickly and reliably transition from prototype to full-rate production. Our business system includes Kanban workflow, one-piece flow cells, visual management and sophisticated inventory control. Using the efficient production processes we have developed to supply our broad range of commercial off-the-shelf products and standard modifications, we make sure your motors get out the door the same way, on time, every time.

**Key Milestone:**  
Production readiness review

#### RESOURCES: ONGOING SUPPORT

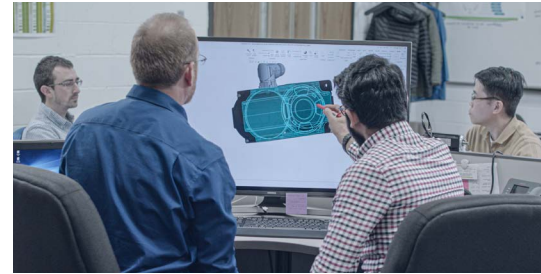
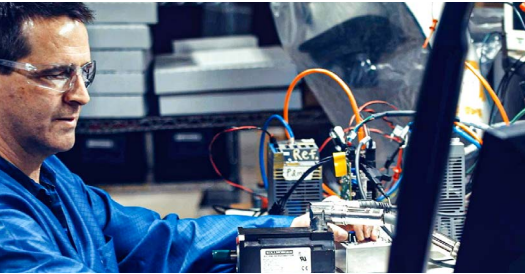
Time and again, Kollmorgen has proven our ability to sustain the product availability, quality and performance required for long-term, large-scale defense programs. We know how to comply with export, cybersecurity and other requirements. We know how to engage in preferred supplier programs designed to ensure timely, defect-free delivery. And we know how to manage costs for the success of your program throughout its lifecycle.

**Key Milestone:**  
Periodic program review

# Ready to discover all your defense system is capable of?

Learn more at [www.kollmorgen.com/aerospace-and-defense](http://www.kollmorgen.com/aerospace-and-defense).

Or connect with a Kollmorgen engineer today at [kollmorgen.com/contact-us](http://kollmorgen.com/contact-us)



## About Kollmorgen

Kollmorgen, a Regal Rexnord Brand, has more than 100 years of motion experience, proven in the industry's highest-performing, most reliable motors, drives, AGV control solutions and automation platforms. We deliver breakthrough solutions that are unmatched in performance, reliability and ease of use, giving machine builders an irrefutable marketplace advantage.

[www.kollmorgen.com](http://www.kollmorgen.com)

# **KOLLMORGEN**

A REGAL REXNORD BRAND

Specifications are subject to change without notice. It is the responsibility of the product user to determine the suitability of this product for a specific application. All trademarks are the property of their respective owners.

KM\_BR\_000384\_RevC\_EN  
©2024 Kollmorgen Corporation. All rights reserved