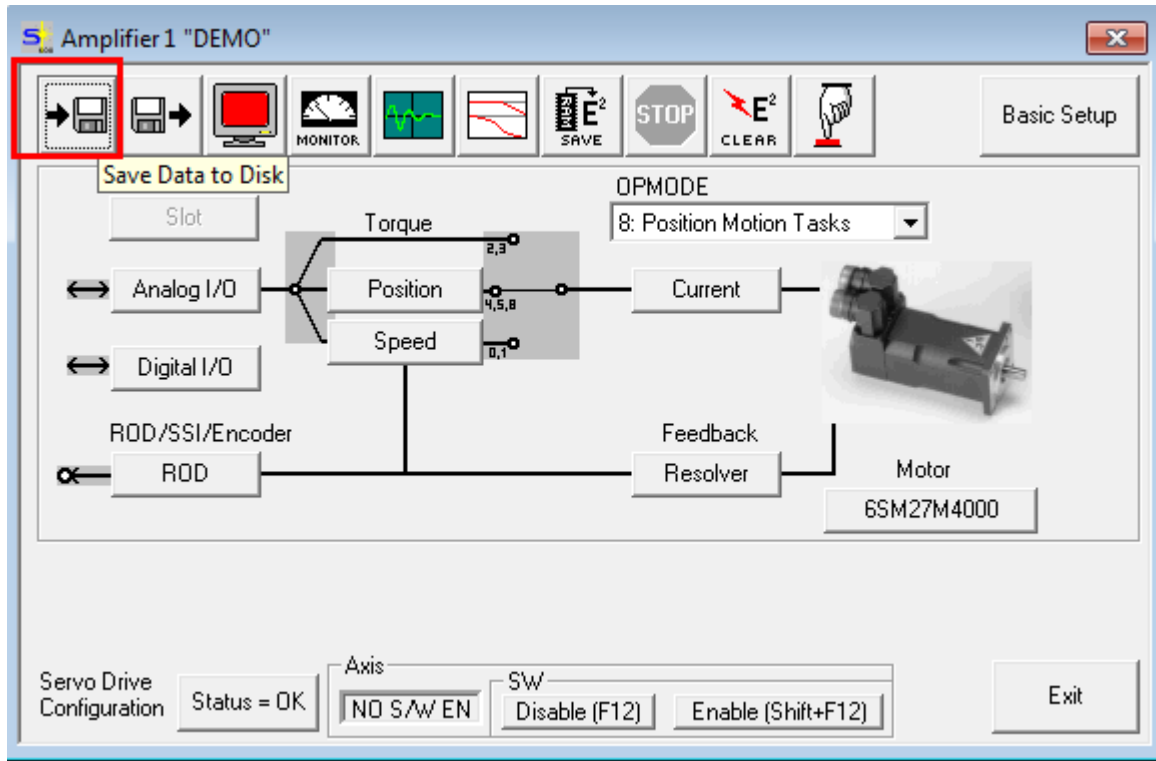


## S600 Factory Default

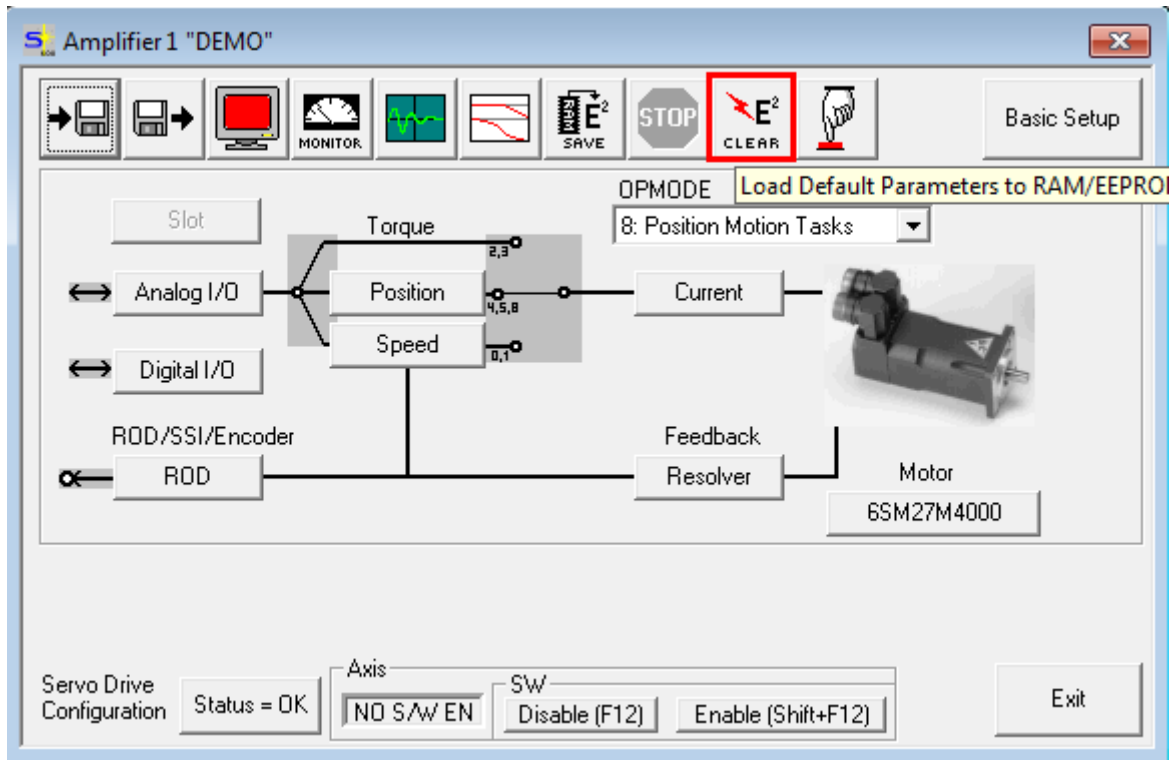
It is suggested to have only the +24 volt logic powered up and not the AC mains going to the drive.

It is always a good idea to have a backup of your drive parameters. Use the Save Data To Disk button on the toolbar of the DRIVE software once online to save the current drive parameters to file.

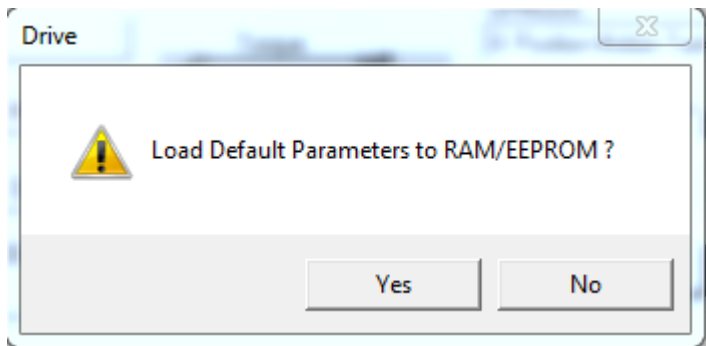


S600 Factory Default:

Using Drive software click on the E<sup>2</sup> Clear button on the toolbar. This will Load Default Parameters to RAM/EEPROM.



The following window will pop up. Click Yes to default to factory settings.



After reset, the Drive software will UPLOAD the parameters showing indication of the upload and then proceeding with the Drive software being online ( and synchronized with the drive parameter values. An indication the drive is reset to factory default is the motor is undefined ( "NN" ).

