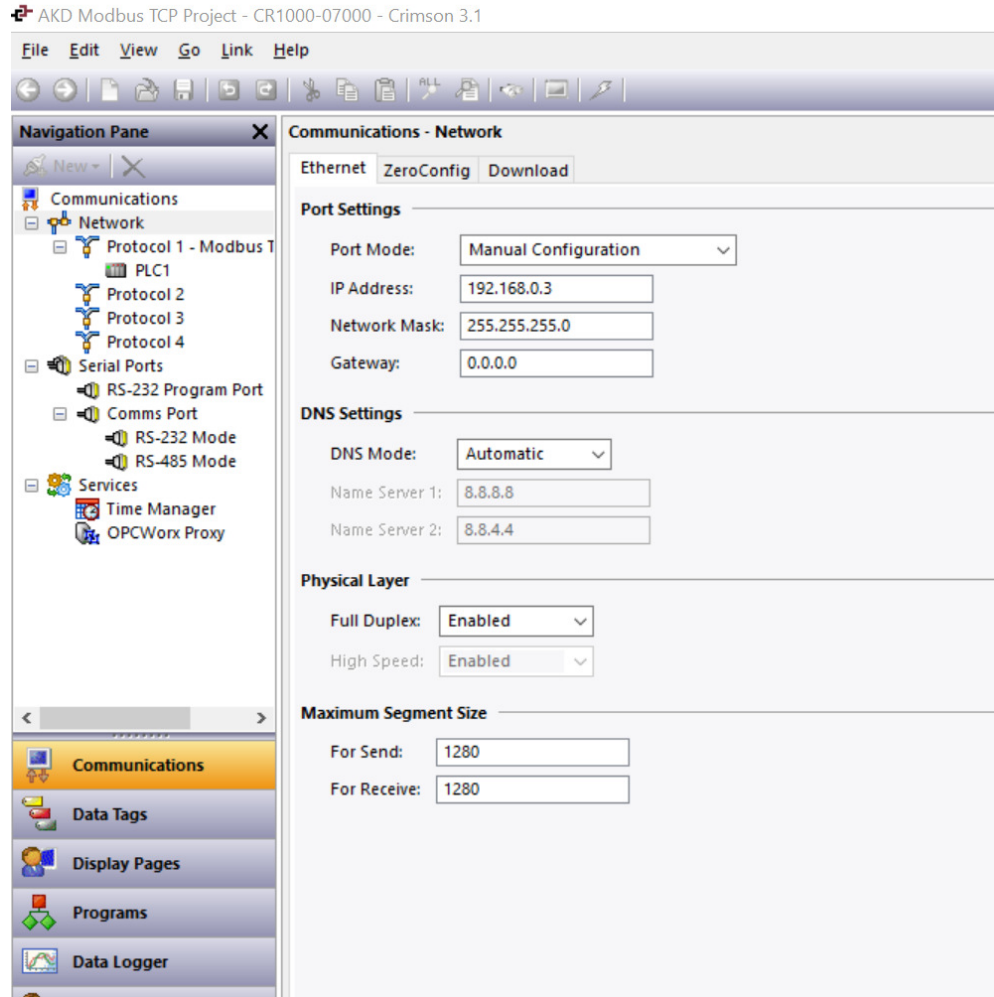
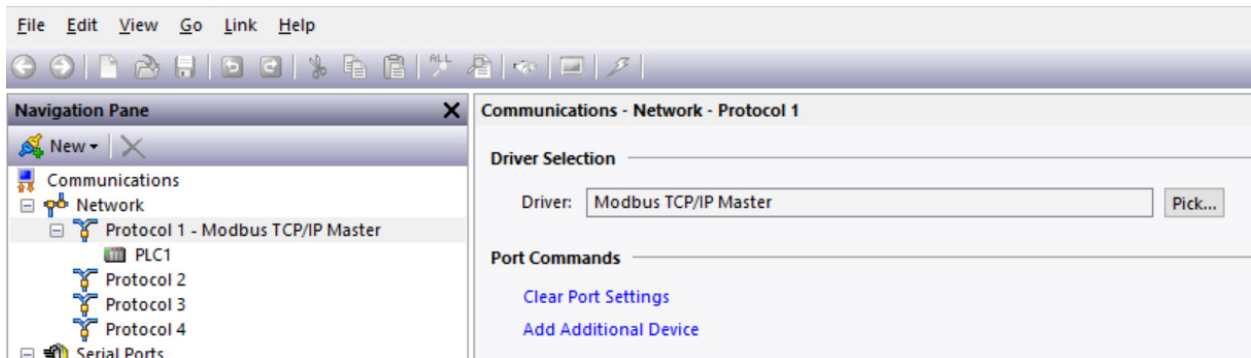


Red Lion HMI to AKD1G using Modbus TCP Rev A 2/17/2010

This application note demonstrates configuration and addressing for Modbus TCP communications a Red Lion HMI using their Crimson 3.1 software to an AKD1G drive.

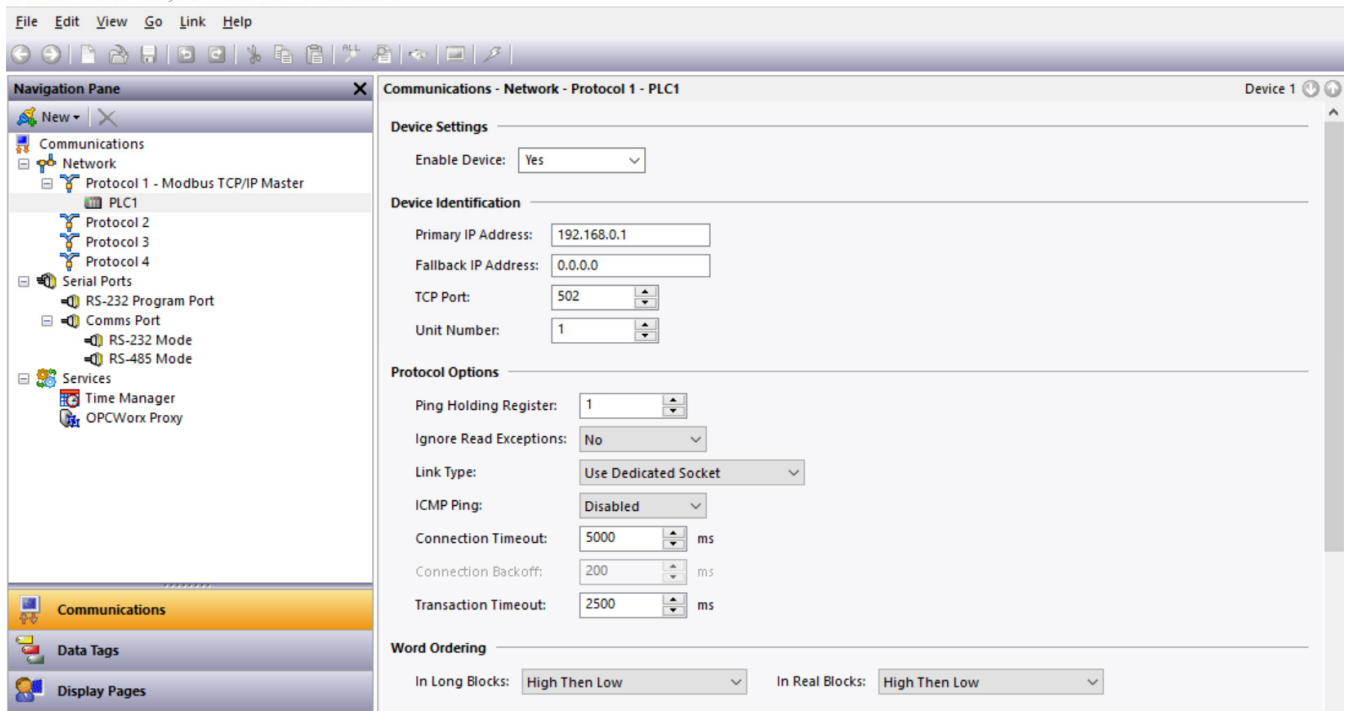
The application notes is an example only and the implementation and verification of proper operation of the application and system is the programmer's responsibility.

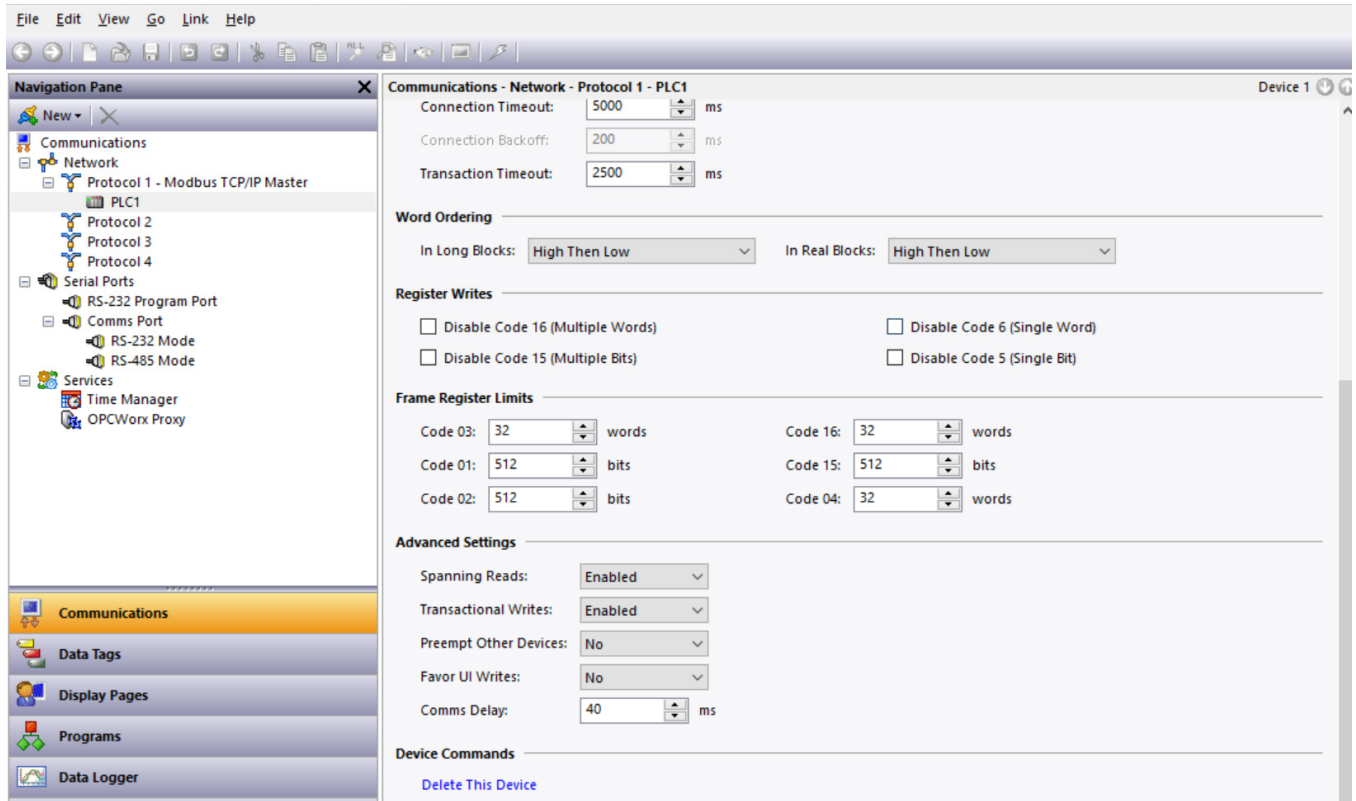




Red Lion allows the user to choose high word then low word or low word then high word for word swapping. Note the configuration below selects high word then low word to match the word ordering in the AKD.

Also note the “Ping Holding Register” entry under “Protocol Options”. Red Lion requires this to be a valid Modbus address to test the connection. In this case since there is offset the HMI will ping the AKD’s Modbus Address 0 (since Red Lion has an offset of 1 with the AKD).





Key Addressing Notes:

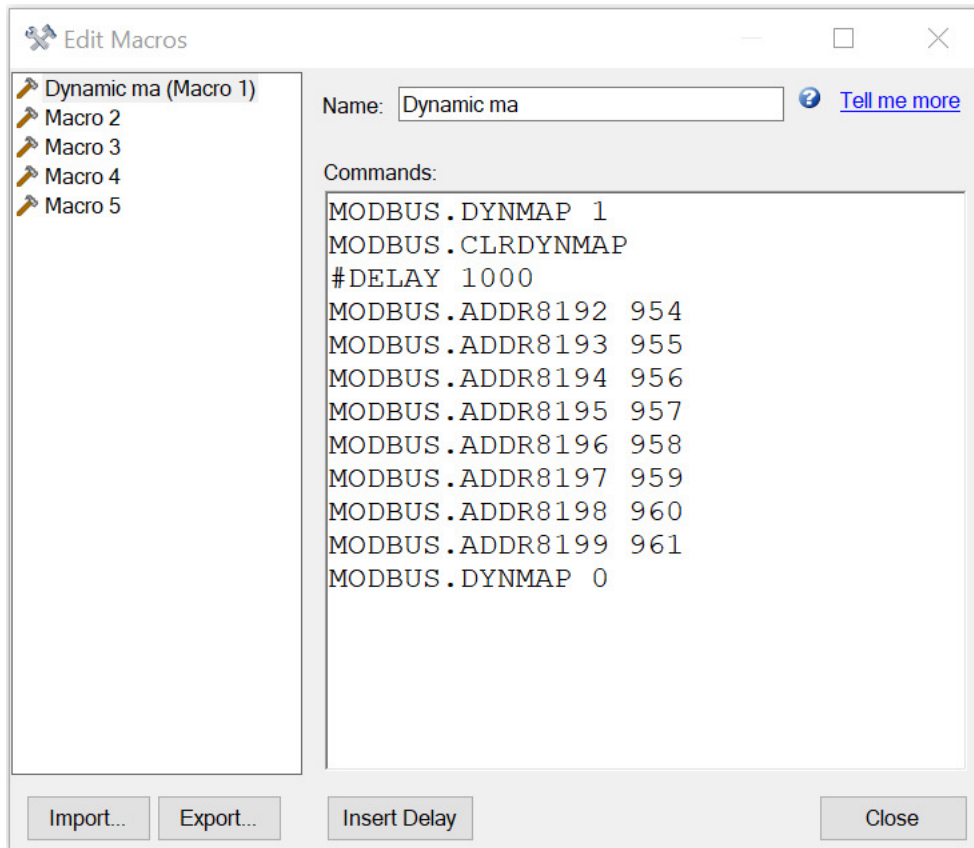
- Modbus Address in the Red Lion=AKD + 1 (offset by 1).
- No Manipulation
- Word Ordering->In Long Blocks: High Then Low

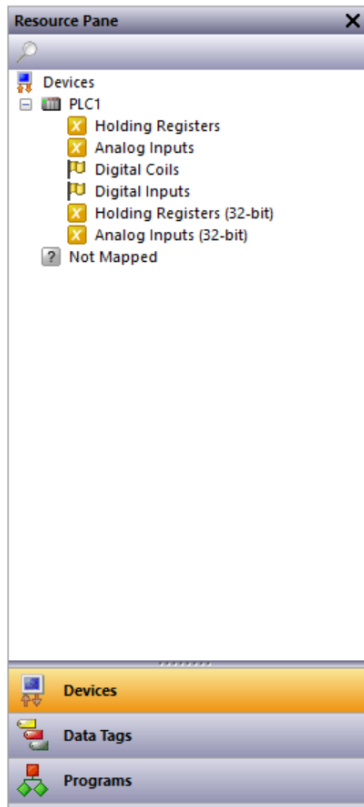
Summary of Red Lion to AKD Modbus Addressing

Red Lion							
<u>AKD Keyword</u>	<u>AKD Native Address</u>	<u>AKD Dynamically Mapped Address</u>	<u>AKD Keyword Data Type</u>	<u>Red Lion Tag Name</u>	<u>Red Lion Tag Address</u>	<u>Red Lion Tag Data Type</u>	<u>Read or Write</u>
PL.FB	2072 2073			PL_FB	402073.LONG	Signed Integer	Read Only
VL.FBFILTER	858 859			VL_FBFILTER	400859.LONG	Signed Integer	Read Only
DRV.EN	258 259			DRV_EN	400259.LONG	Signed Integer	Write Only
DRV.DIS	236 237			DRV_DIS	400237.LONG	Signed Integer	Write Only
MT.ACC_32	2056 2057			MT_ACC_32	402057.LONG	Signed Integer	Read and Write
DRV.STOP	274 275			DRV_STOP	400275.LONG	Signed Integer	Read and Write
MT.V	566 567			MT_V	400567.LONG	Signed Integer	Read and Write
MT.DEC_32	2058 2059			MT_DEC_32	402059.LONG	Signed Integer	Read and Write
MT.P_32	2060 2061			MT_P_32	402061.LONG	Signed Integer	Read and Write
MT.CNTL	532 533			MT_CNTL	400533.LONG	Signed Integer	Read and Write
MT.NUM	548 549			MT_NUM	4000549.LONG	Signed Integer	Read and Write

MODBUS.MT	950 951			MODBUS_MT	400951.LONG	Signed Integer	Write Only
SM.MODE	750 751			SM_MODE	400751.LONG	Signed Integer	Read and Write
SM.V1	758 759			SM_V1	400759.LONG	Signed Integer	Read and Write
DRV.FAULT1	954 955	8192 8193		FAULT_ARRAY	408193.LONG	Signed Integer	Read Only
DRV.FAULT2	956 957	8194 8195					
DRV.FAULT3	958 959	8196 8197					
DRV.FAULT4	960 961	8198 8199					
DRV.FAULT1	954 955			DRV_FAULT1	400955.LONG	Signed Integer	Read and Write
HOME.MOVE	408 409			HOME_MOVE	400409.LONG	Signed Integer	Read and Write
DRV.CLRFAULT	224 225			DRV_CLRFAULT	400255.LONG	Signed Integer	Read and Write

Dynamic Mapping Commands





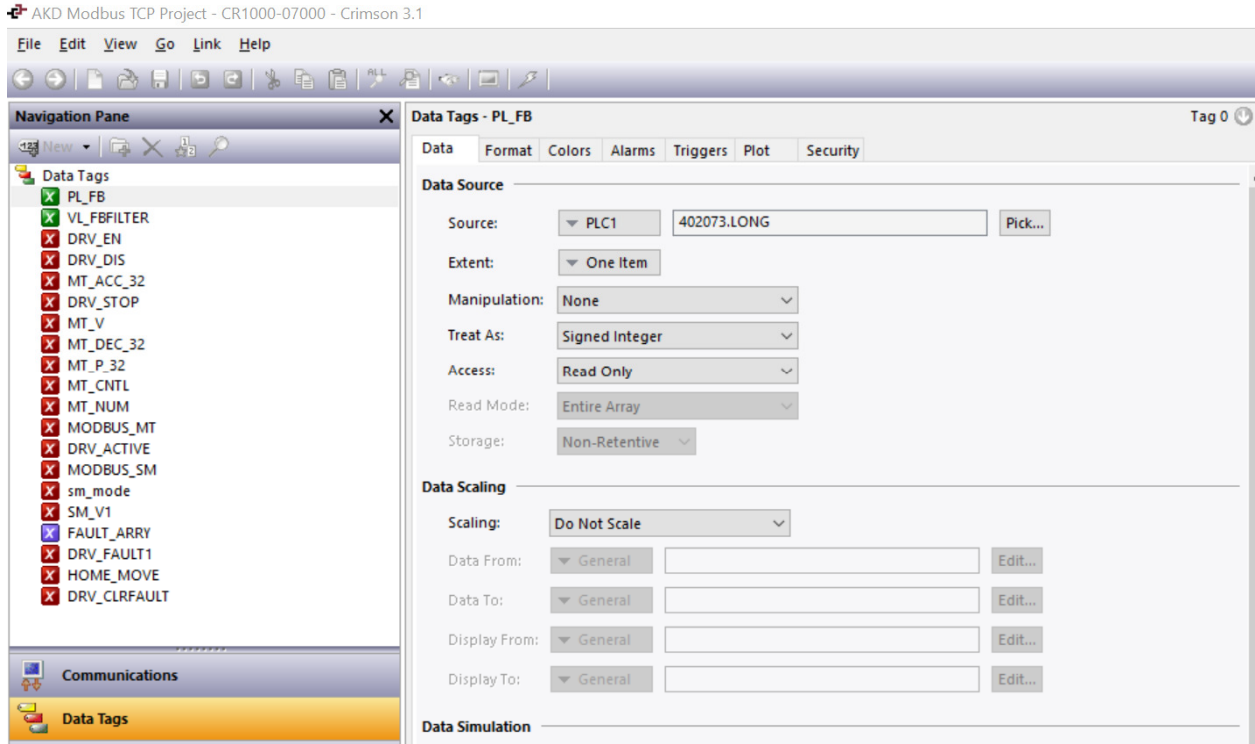
Tags

PL.FB

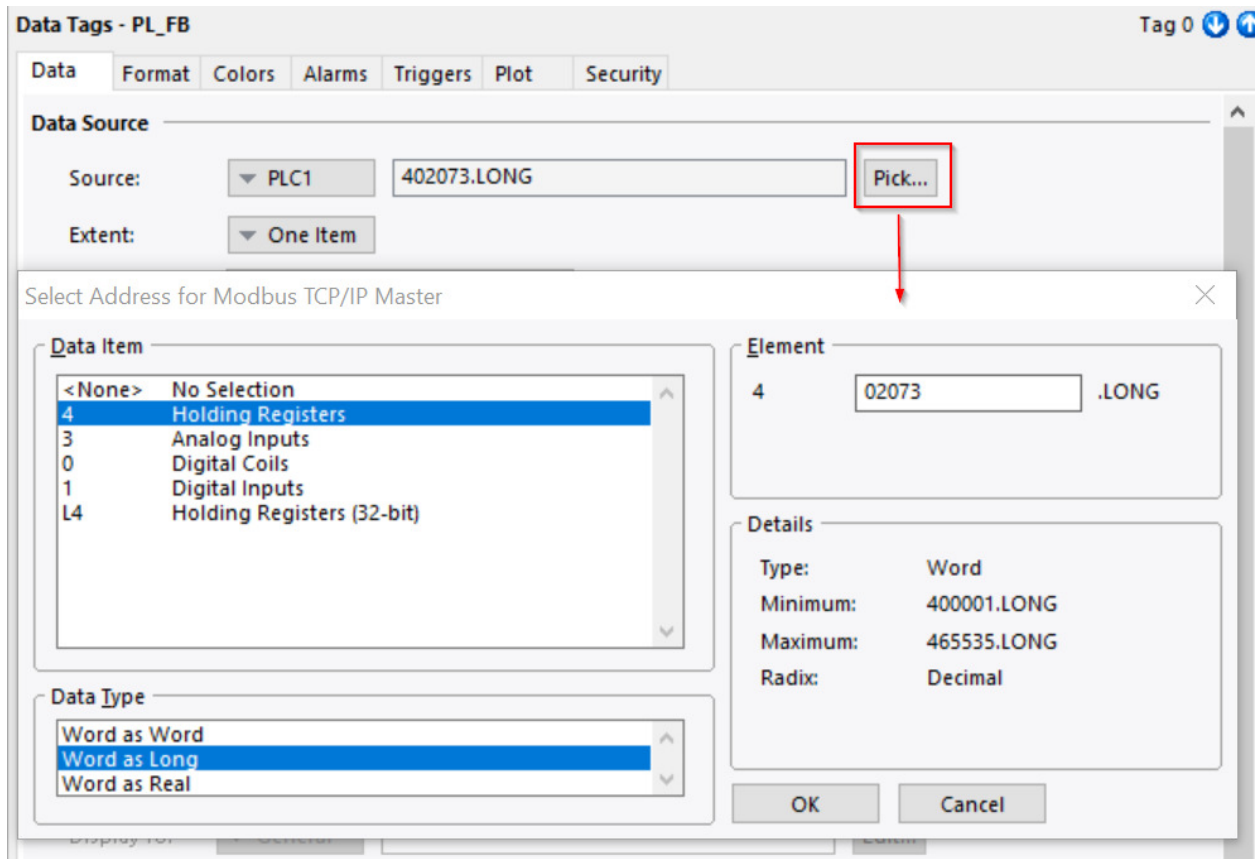
From Workbench Help

PL.FB_32	2072	Yes	low 32-bit word, signed
----------	------	-----	-------------------------

Note the tag's address is offset by 1 for the starting address (2072+1=2073) and the type is LONG for 32 bit.



To enter the address select the Pick... button and then configure (format) the address accordingly.



Data Format Colors Alarms Triggers Plot Security

Data Labels

Label: Same As Name Translate...
Alias: Same As Name
Description:
Class:

Format Type

Format Type: Numeric Pick...

Data Limits

Minimum Value: General Default Edit...
Maximum Value: General Default Edit...
Default Limits: Automatic

Fixed Data Format

Number Base: Decimal Sign Mode: Hard Sign
Digits Before DP: 7 Digits After DP: 3
Lead Character: None Group Digits: No

VL.FBFILTER

VL.FBFILTER	858	Yes	low 32-bit word, signed
-----------------------------	-----	-----	-------------------------

The address is offset by 1 from the Workbench table (858+1=859) and the type is LONG.

AKD Modbus TCP Project - CR1000-07000 - Crimson 3.1

Data Format Colors Alarms Triggers Plot Security

Data Labels

Label: Same As Name Translate...
Alias: Same As Name
Description:
Class:

Format Type

Format Type: Numeric Pick...

Data Limits

Minimum Value: General Default Edit...
Maximum Value: General Default Edit...
Default Limits: Automatic

Fixed Data Format

Number Base: Decimal Sign Mode: Hard Sign
Digits Before DP: 7 Digits After DP: 3
Lead Character: None Group Digits: No

Navigation Pane

- Data Tags
 - PL_FB
 - VL_FBFILTER
 - DRV_EN
 - DRV_DIS
 - MT_ACC_32
 - DRV_STOP
 - MT_V
 - MT_DEC_32
 - MT_P_32
 - MT_CNTL
 - MT_NUM
 - MODBUS_MT
 - DRV_ACTIVE
 - MODBUS_SM
 - sm_mode
 - SM_V1
 - FAULT_ARRAY
 - DRV_FAULT1
 - HOME_MOVE
 - DRV_CLRFAULT
- Communications
- Data Tags

Data Tags - DRV_EN Tag 2

Data | Format | Colors | Alarms | Triggers | Plot | Security

Data Source

Source: PLC1 400255.LONG Pick...

Extent: One Item

Manipulation: None

Treat As: Signed Integer

Access: Write Only

Read Mode: Entire Array

Storage: Non-Retentive

Data Scaling

Scaling: Do Not Scale

Data From: General Edit...

Data To: General Edit...

Display From: General Edit...

Display To: General Edit...

Data Simulation

Data Tags - DRV_EN Tag 2

Data | Format | Colors | Alarms | Triggers | Plot | Security

Data Labels

Label: Same As Name Translate...

Alias: Same As Name

Description:

Class:

Format Type

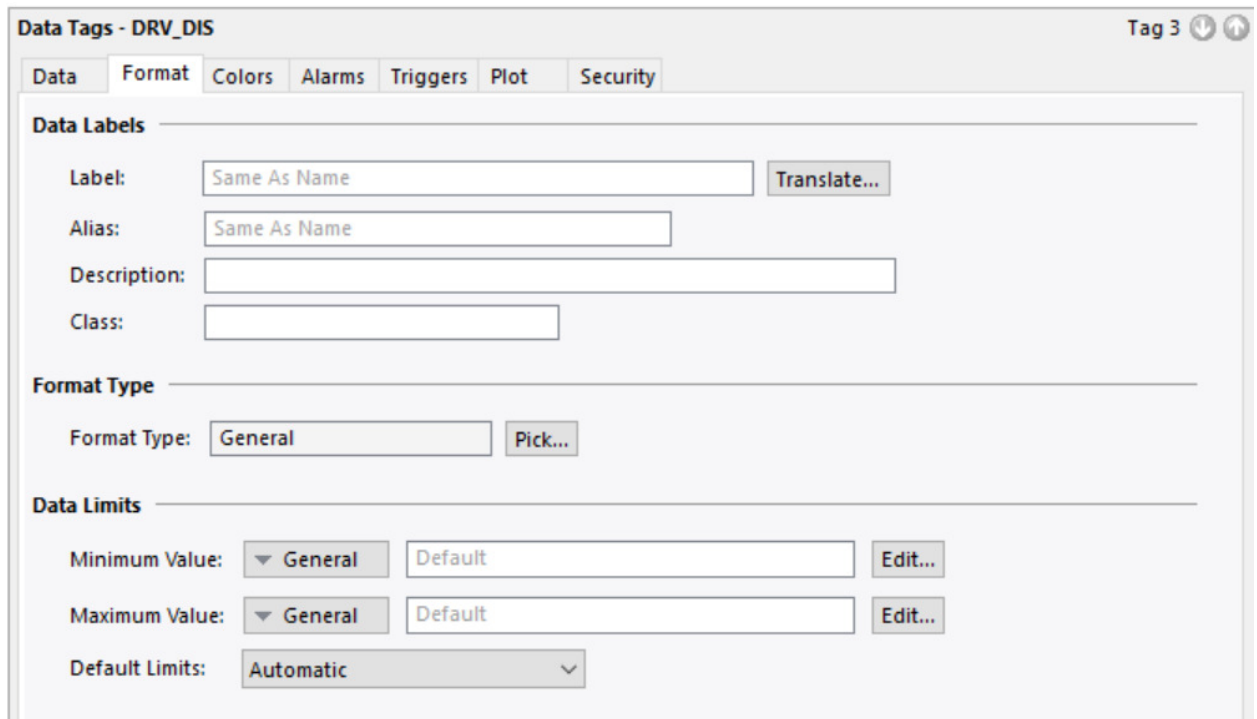
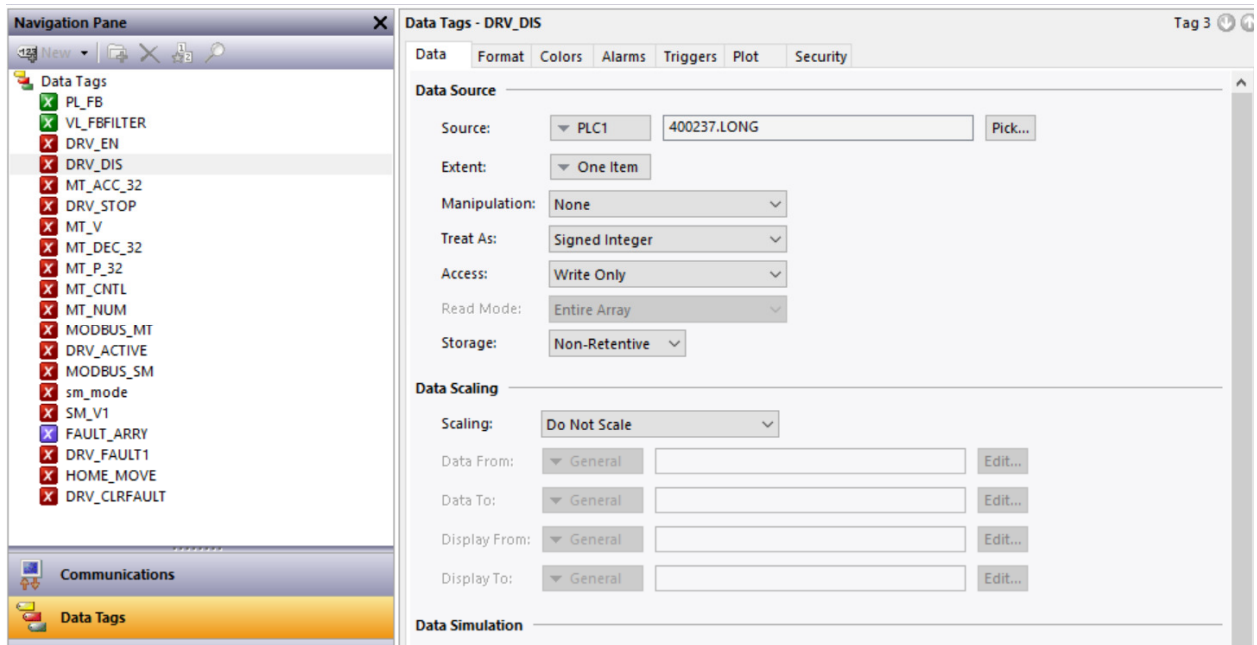
Format Type: General Pick...

Data Limits

Minimum Value: General Default Edit...

Maximum Value: General Default Edit...

Default Limits: Automatic



Navigation Pane

- Data Tags
 - PL_FB
 - VL_FBFILTER
 - DRV_EN
 - DRV_DIS
 - MT_ACC_32
 - DRV_STOP
 - MT_V
 - MT_DEC_32
 - MT_P_32
 - MT_CNTL
 - MT_NUM
 - MODBUS_MT
 - DRV_ACTIVE
 - MODBUS_SM
 - sm_mode
 - SM_V1
 - FAULT_ARRAY
 - DRV_FAULT1
 - HOME_MOVE
 - DRV_CLRFAULT
- Communications
- Data Tags

Data Tags - MT_ACC_32 Tag 4

Data | Format | Colors | Alarms | Triggers | Plot | Security

Data Source

Source: PLC1 402057.LONG Pick...

Extent: One Item

Manipulation: None

Treat As: Signed Integer

Access: Read and Write

Read Mode: Entire Array

Storage: Non-Retentive

Data Scaling

Scaling: Do Not Scale

Data From: General Edit...

Data To: General Edit...

Display From: General Edit...

Display To: General Edit...

Data Simulation

Data Tags - MT_ACC_32 Tag 4

Data | Format | Colors | Alarms | Triggers | Plot | Security

Data Labels

Label: Same As Name Translate...

Alias: Same As Name

Description:

Class:

Format Type

Format Type: Numeric Pick...

Data Limits

Minimum Value: General Default Edit...

Maximum Value: General Default Edit...

Default Limits: Automatic

Fixed Data Format

Number Base: Decimal Sign Mode: Unsigned

Digits Before DP: 7 Digits After DP: 3

Lead Character: None Group Digits: No

Navigation Pane

- Data Tags
 - PL_FB
 - VL_FBFILTER
 - DRV_EN
 - DRV_DIS
 - MT_ACC_32
 - DRV_STOP
 - MT_V
 - MT_DEC_32
 - MT_P_32
 - MT_CNTL
 - MT_NUM
 - MODBUS_MT
 - DRV_ACTIVE
 - MODBUS_SM
 - sm_mode
 - SM_V1
 - FAULT_ARRAY
 - DRV_FAULT1
 - HOME_MOVE
 - DRV_CLRFAULT
- Communications
- Data Tags

Data Tags - DRV_STOP Tag 13

Data | Format | Colors | Alarms | Triggers | Plot | Security

Data Source

Source: PLC1 400275.LONG Pick...

Extent: One Item

Manipulation: None

Treat As: Signed Integer

Access: Read and Write

Read Mode: Entire Array

Storage: Non-Retentive

Data Scaling

Scaling: Do Not Scale

Data From: General Edit...

Data To: General Edit...

Display From: General Edit...

Display To: General Edit...

Data Simulation

Data Tags - DRV_STOP Tag 13

Data | Format | Colors | Alarms | Triggers | Plot | Security

Data Labels

Label: Same As Name Translate...

Alias: Same As Name

Description:

Class:

Format Type

Format Type: General Pick...

Data Limits

Minimum Value: General Default Edit...

Maximum Value: General Default Edit...

Default Limits: Automatic

Navigation Pane

- Data Tags
 - PL_FB
 - VL_FBFILTER
 - DRV_EN
 - DRV_DIS
 - MT_ACC_32
 - DRV_STOP
 - MT_V
 - MT_DEC_32
 - MT_P_32
 - MT_CNTRL
 - MT_NUM
 - MODBUS_MT
 - DRV_ACTIVE
 - MODBUS_SM
 - sm_mode
 - SM_V1
 - FAULT_ARRAY
 - DRV_FAULT1
 - HOME_MOVE
 - DRV_CLRFAULT
- Communications
- Data Tags

Data Tags - MT_V Tag 5

Data | **Format** | **Colors** | **Alarms** | **Triggers** | **Plot** | **Security**

Data Source

Source: PLC1 400567.LONG Pick...

Extent: One Item

Manipulation: None

Treat As: Signed Integer

Access: Read and Write

Read Mode: Entire Array

Storage: Non-Retentive

Data Scaling

Scaling: Do Not Scale

Data From: General Edit...

Data To: General Edit...

Display From: General Edit...

Display To: General Edit...

Data Simulation

Data Tags - MT_V Tag 5

Data | **Format** | **Colors** | **Alarms** | **Triggers** | **Plot** | **Security**

Data Labels

Label: Same As Name Translate...

Alias: Same As Name

Description:

Class:

Format Type

Format Type: Numeric Pick...

Data Limits

Minimum Value: General Default Edit...

Maximum Value: General Default Edit...

Default Limits: Automatic

Fixed Data Format

Number Base: Decimal Sign Mode: Unsigned

Digits Before DP: 7 Digits After DP: 3

Lead Character: None Group Digits: No

Navigation Pane

- Data Tags
 - PL_FB
 - VL_FBFILTER
 - DRV_EN
 - DRV_DIS
 - MT_ACC_32
 - DRV_STOP
 - MT_V
 - MT_DEC_32
 - MT_P_32
 - MT_CNTL
 - MT_NUM
 - MODBUS_MT
 - DRV_ACTIVE
 - MODBUS_SM
 - sm_mode
 - SM_V1
 - FAULT_ARRAY
 - DRV_FAULT1
 - HOME_MOVE
 - DRV_CLRFAULT
- Communications
- Data Tags

Data Tags - MT_DEC_32 Tag 6

Data | Format | Colors | Alarms | Triggers | Plot | Security

Data Source

Source: PLC1 402059.LONG Pick...

Extent: One Item

Manipulation: None

Treat As: Signed Integer

Access: Read and Write

Read Mode: Entire Array

Storage: Non-Retentive

Data Scaling

Scaling: Do Not Scale

Data From: General Edit...

Data To: General Edit...

Display From: General Edit...

Display To: General Edit...

Data Simulation

Data Tags - MT_DEC_32 Tag 6

Data | Format | Colors | Alarms | Triggers | Plot | Security

Data Labels

Label: Same As Name Translate...

Alias: Same As Name

Description:

Class:

Format Type

Format Type: Numeric Pick...

Data Limits

Minimum Value: General Default Edit...

Maximum Value: General Default Edit...

Default Limits: Automatic

Fixed Data Format

Number Base: Decimal Sign Mode: Hard Sign

Digits Before DP: 7 Digits After DP: 3

Lead Character: None Group Digits: No

Navigation Pane Data Tags - MT_P_32 Tag 7

Data Tags

- PL_FB
- VL_FBFILTER
- DRV_EN
- DRV_DIS
- MT_ACC_32
- DRV_STOP
- MT_V
- MT_DEC_32
- MT_P_32**
- MT_CNTL
- MT_NUM
- MODBUS_MT
- DRV_ACTIVE
- MODBUS_SM
- sm_mode
- SM_V1
- FAULT_ARRAY
- DRV_FAULT1
- HOME_MOVE
- DRV_CLRFAULT

Communications

Data Tags

Data Source

Source:

Extent:

Manipulation:

Treat As:

Access:

Read Mode:

Storage:

Data Scaling

Scaling:

Data From:

Data To:

Display From:

Display To:

Data Simulation

Data Tags - MT_P_32 Tag 7

Data | Format | Colors | Alarms | Triggers | Plot | Security

Data Labels

Label:

Alias:

Description:

Class:

Format Type

Format Type:

Data Limits

Minimum Value:

Maximum Value:

Default Limits:

Fixed Data Format

Number Base: Sign Mode:

Digits Before DP: Digits After DP:

Lead Character: Group Digits:

Navigation Pane | **Data Tags - MT_CNTL** Tag 8

Data | Format | Colors | Alarms | Triggers | Plot | Security

Data Source

Source:

Extent:

Manipulation:

Treat As:

Access:

Read Mode:

Storage:

Data Scaling

Scaling:

Data From:

Data To:

Display From:

Display To:

Data Simulation

Data Tags - MT_CNTL Tag 8

Data | **Format** | Colors | Alarms | Triggers | Plot | Security

Data Labels

Label:

Alias:

Description:

Class:

Format Type

Format Type:

Data Limits

Minimum Value:

Maximum Value:

Default Limits:

Navigation Pane Data Tags - MT_NUM Tag 9

433 New | | | |

- Data Tags
 - PL_FB
 - VL_FILTER
 - DRV_EN
 - DRV_DIS
 - MT_ACC_32
 - DRV_STOP
 - MT_V
 - MT_DEC_32
 - MT_P_32
 - MT_CNTL
 - MT_NUM**
 - MODBUS_MT
 - DRV_ACTIVE
 - MODBUS_SM
 - sm_mode
 - SM_V1
 - FAULT_ARRAY
 - DRV_FAULT1
 - HOME_MOVE
 - DRV_CLRFAULT

Communications

Data Tags

Data Source

Source:

Extent:

Manipulation:

Treat As:

Access:

Read Mode:

Storage:

Data Scaling

Scaling:

Data From:

Data To:

Display From:

Display To:

Data Simulation

Data Tags - MT_NUM Tag 9

Data | **Format** | Colors | Alarms | Triggers | Plot | Security

Data Labels

Label:

Alias:

Description:

Class:

Format Type

Format Type:

Data Limits

Minimum Value:

Maximum Value:

Default Limits:

Navigation Pane

New | | |

Data Tags

- PL_FB
- VL_FBFILTER
- DRV_EN
- DRV_DIS
- MT_ACC_32
- DRV_STOP
- MT_V
- MT_DEC_32
- MT_P_32
- MT_CNTL
- MT_NUM
- MODBUS_MT
- DRV_ACTIVE
- MODBUS_SM
- sm_mode
- SM_V1
- FAULT_ARR
- DRV_FAULT1
- HOME_MOVE
- DRV_CLRFAULT

Communications

Data Tags

Data Tags - MODBUS_MT Tag 10

Data | **Format** | Colors | Alarms | Triggers | Plot | Security

Data Source

Source:

Extent:

Manipulation:

Treat As:

Access:

Read Mode:

Storage:

Data Scaling

Scaling:

Data From:

Data To:

Display From:

Display To:

Data Simulation

Data Tags - MODBUS_MT Tag 10

Data **Format** Colors Alarms Triggers Plot Security

Data Labels

Label:

Alias:

Description:

Class:

Format Type

Format Type:

Data Limits

Minimum Value:

Maximum Value:

Default Limits:

Navigation Pane

New

- Data Tags
 - PL_FB
 - VL_FBFILTER
 - DRV_EN
 - DRV_DIS
 - MT_ACC_32
 - DRV_STOP
 - MT_V
 - MT_DEC_32
 - MT_P_32
 - MT_CNTL
 - MT_NUM
 - MODBUS_MT
 - DRV_ACTIVE
 - MODBUS_SM
 - sm_mode
 - SM_V1
 - FAULT_ARRAY
 - DRV_FAULT1
 - HOME_MOVE
 - DRV_CLRFAULT

Communications

Data Tags

Data Tags - DRV_ACTIVE Tag 11

Data **Format** Colors Alarms Triggers Plot Security

Data Source

Source:

Extent:

Manipulation:

Treat As:

Access:

Read Mode:

Storage:

Data Scaling

Scaling:

Data From:

Data To:

Display From:

Display To:

Data Simulation

Data Tags - DRV_ACTIVE Tag 11

Data | **Format** | Colors | Alarms | Triggers | Plot | Security

Data Labels

Label:

Alias:

Description:

Class:

Format Type

Format Type:

Data Limits

Minimum Value:

Maximum Value:

Default Limits:

Navigation Pane

New | [Icons]

- Data Tags
 - PL_FB
 - VL_FBFILTER
 - DRV_EN
 - DRV_DIS
 - MT_ACC_32
 - DRV_STOP
 - MT_V
 - MT_DEC_32
 - MT_P_32
 - MT_CNTL
 - MT_NUM
 - MODBUS_MT
 - DRV_ACTIVE
 - MODBUS_SM
 - sm_mode
 - SM_V1
 - FAULT_ARRAY
 - DRV_FAULT1
 - HOME_MOVE
 - DRV_CLRFAULT

Communications

Data Tags

Data Tags - MODBUS_SM Tag 12

Data | **Format** | Colors | Alarms | Triggers | Plot | Security

Data Source

Source:

Extent:

Manipulation:

Treat As:

Access:

Read Mode:

Storage:

Data Scaling

Scaling:

Data From:

Data To:

Display From:

Display To:

Data Simulation

Navigation Pane Data Tags - MODBUS_SM Tag 12

New

Data Tags

- PL_FB
- VL_FBFILTER
- DRV_EN
- DRV_DIS
- MT_ACC_32
- DRV_STOP
- MT_V
- MT_DEC_32
- MT_P_32
- MT_CNTL
- MT_NUM
- MODBUS_MT
- DRV_ACTIVE
- MODBUS_SM
- sm_mode
- SM_V1
- FAULT_ARRY
- DRV_FAULT1
- HOME_MOVE
- DRV_CLRFAULT

Data Labels

Label:

Alias:

Description:

Class:

Format Type

Format Type:

Data Limits

Minimum Value:

Maximum Value:

Default Limits:

Navigation Pane Data Tags - sm_mode Tag 14

New

Data Tags

- PL_FB
- VL_FBFILTER
- DRV_EN
- DRV_DIS
- MT_ACC_32
- DRV_STOP
- MT_V
- MT_DEC_32
- MT_P_32
- MT_CNTL
- MT_NUM
- MODBUS_MT
- DRV_ACTIVE
- MODBUS_SM
- sm_mode
- SM_V1
- FAULT_ARRY
- DRV_FAULT1
- HOME_MOVE
- DRV_CLRFAULT

Data Source

Source:

Extent:

Manipulation:

Treat As:

Access:

Read Mode:

Storage:

Data Scaling

Scaling:

Data From:

Data To:

Display From:

Display To:

Data Simulation

Data Tags - sm_mode Tag 14

Data **Format** Colors Alarms Triggers Plot Security

Data Labels

Label:

Alias:

Description:

Class:

Format Type

Format Type:

Data Limits

Minimum Value:

Maximum Value:

Default Limits:

Navigation Pane

New

- Data Tags
- PL_FB
- VL_FBFILTER
- DRV_EN
- DRV_DIS
- MT_ACC_32
- DRV_STOP
- MT_V
- MT_DEC_32
- MT_P_32
- MT_CNTL
- MT_NUM
- MODBUS_MT
- DRV_ACTIVE
- MODBUS_SM
- sm_mode
- SM_V1
- FAULT_ARRAY
- DRV_FAULT1
- HOME_MOVE
- DRV_CLRFAULT

Communications

Data Tags

Data Tags - SM_V1 Tag 15

Data **Format** Colors Alarms Triggers Plot Security

Data Source

Source:

Extent:

Manipulation:

Treat As:

Access:

Read Mode:

Storage:

Data Scaling

Scaling:

Data From:

Data To:

Display From:

Display To:

Data Simulation

Data Tags - SM_V1 Tag 15

Data Labels

Label:
 Alias:
 Description:
 Class:

Format Type

Format Type:

Data Limits

Minimum Value:
 Maximum Value:
 Default Limits:

Navigation Pane Data Tags - FAULT_ARRAY Tag 16

- Data Tags
 - PL_FB
 - VL_FBFILTER
 - DRV_EN
 - DRV_DIS
 - MT_ACC_32
 - DRV_STOP
 - MT_V
 - MT_DEC_32
 - MT_P_32
 - MT_CNTL
 - MT_NUM
 - MODBUS_MT
 - DRV_ACTIVE
 - MODBUS_SM
 - sm_mode
 - SM_V1
 - FAULT_ARRAY**
 - DRV_FAULT1
 - HOME_MOVE
 - DRV_CLRFAULT

Data Source

Source:
 Extent:
 Manipulation:
 Treat As:
 Access:
 Read Mode:
 Storage:

Data Scaling

Scaling:
 Data From:
 Data To:
 Display From:
 Display To:

Data Simulation

Data Format Colors Alarms Triggers Plot Security

Data Labels

Label: Same As Name Translate...

Alias: Same As Name

Description:

Class:

Format Type

Format Type: Numeric Pick...

Data Limits

Minimum Value: General Default Edit...

Maximum Value: General Default Edit...

Default Limits: Automatic

Fixed Data Format

Number Base: Decimal Sign Mode: Unsigned

Digits Before DP: 10 Digits After DP: 0

Lead Character: None Group Digits: No

Dynamic Data Format

Dynamic DP: General none Edit...

Navigation Pane

- Data Tags
 - PL_FB
 - VL_FBFILTER
 - DRV_EN
 - DRV_DIS
 - MT_ACC_32
 - DRV_STOP
 - MT_V
 - MT_DEC_32
 - MT_P_32
 - MT_CNTL
 - MT_NUM
 - MODBUS_MT
 - DRV_ACTIVE
 - MODBUS_SM
 - sm_mode
 - SM_V1
 - FAULT_ARRAY
 - DRV_FAULT1
 - HOME_MOVE
 - DRV_CLRFAULT
- Communications
- Data Tags

Data Tags - DRV_FAULT1 Tag 19

Data | Format | Colors | Alarms | Triggers | Plot | Security

Data Source

Source: PLC1 400955.LONG Pick...

Extent: One Item

Manipulation: None

Treat As: Signed Integer

Access: Read and Write

Read Mode: Entire Array

Storage: Non-Retentive

Data Scaling

Scaling: Do Not Scale

Data From: General [] Edit...

Data To: General [] Edit...

Display From: General [] Edit...

Display To: General [] Edit...

Data Simulation

Data Tags - DRV_FAULT1 Tag 19

Data | Format | Colors | Alarms | Triggers | Plot | Security

Data Labels

Label: Same As Name Translate...

Alias: Same As Name

Description: []

Class: []

Format Type

Format Type: General Pick...

Data Limits

Minimum Value: General Default Edit...

Maximum Value: General Default Edit...

Default Limits: Automatic

Navigation Pane

- Data Tags
 - PL_FB
 - VL_FBFILTER
 - DRV_EN
 - DRV_DIS
 - MT_ACC_32
 - DRV_STOP
 - MT_V
 - MT_DEC_32
 - MT_P_32
 - MT_CNTL
 - MT_NUM
 - MODBUS_MT
 - DRV_ACTIVE
 - MODBUS_SM
 - sm_mode
 - SM_V1
 - FAULT_ARRAY
 - DRV_FAULT1
 - HOME_MOVE**
 - DRV_CLRFAULT
- Communications
- Data Tags

Data Tags - HOME_MOVE Tag 18

Data | Format | Colors | Alarms | Triggers | Plot | Security

Data Source

Source: PLC1 400409.LONG Pick...

Extent: One Item

Manipulation: None

Treat As: Signed Integer

Access: Read and Write

Read Mode: Entire Array

Storage: Non-Retentive

Data Scaling

Scaling: Do Not Scale

Data From: General Edit...

Data To: General Edit...

Display From: General Edit...

Display To: General Edit...

Data Simulation

Data Tags - HOME_MOVE Tag 18

Data | **Format** | Colors | Alarms | Triggers | Plot | Security

Data Labels

Label: Same As Name Translate...

Alias: Same As Name

Description:

Class:

Format Type

Format Type: General Pick...

Data Limits

Minimum Value: General Default Edit...

Maximum Value: General Default Edit...

Default Limits: Automatic

Navigation Pane

- PL_FB
- VL_FBFILTER
- DRV_EN
- DRV_DIS
- MT_ACC_32
- DRV_STOP
- MT_V
- MT_DEC_32
- MT_P_32
- MT_CNTL
- MT_NUM
- MODBUS_MT
- DRV_ACTIVE
- MODBUS_SM
- sm_mode
- SM_V1
- FAULT_ARRAY
- DRV_FAULT1
- HOME_MOVE
- DRV_CLRFAULT

Data Tags - DRV_CLRFAULT Tag 17

Data Source

Source: PLC1 400225.LONG Pick...

Extent: One Item

Manipulation: None

Treat As: Signed Integer

Access: Read and Write

Read Mode: Entire Array

Storage: Non-Retentive

Data Scaling

Scaling: Do Not Scale

Data From: General Edit...

Data To: General Edit...

Display From: General Edit...

Display To: General Edit...

Data Simulation

Data Tags - DRV_CLRFAULT Tag 17

Data Labels

Label: Same As Name Translate...

Alias: Same As Name

Description:

Class:

Format Type

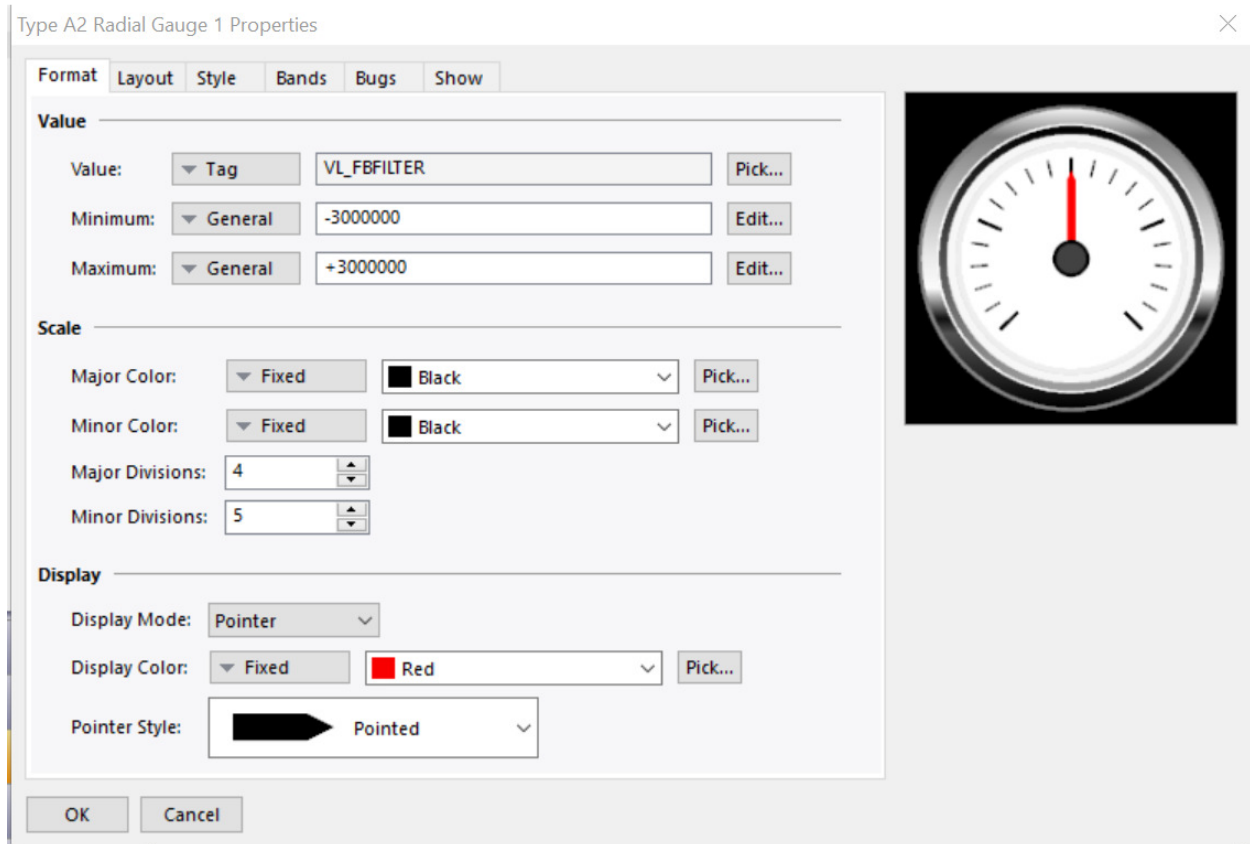
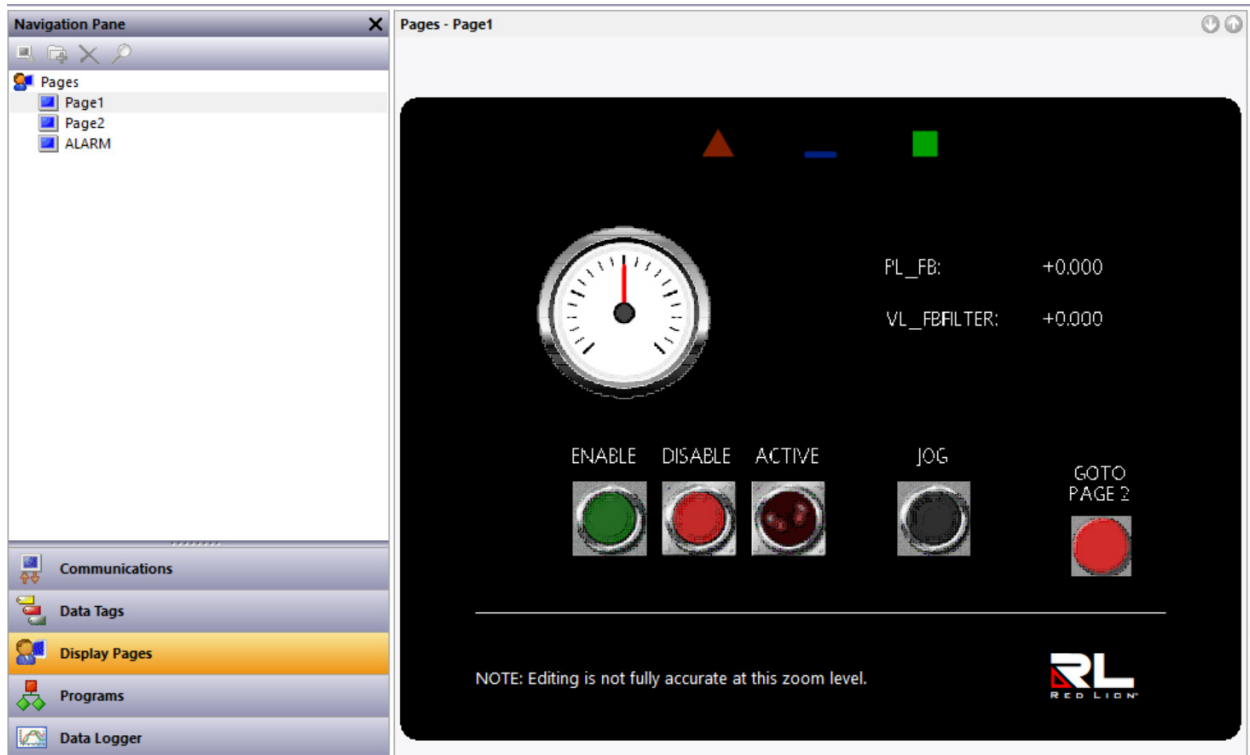
Format Type: General Pick...

Data Limits

Minimum Value: General Default Edit...

Maximum Value: General Default Edit...

Default Limits: Automatic



Data | More | Entry | Format | Colors | Figure | Edge | Show

Data Source

Value: Tag PL_FB Pick...

Field Type

Contents: Label and Data

Layout: Single Line

Operation: Display Only

Get From Tag

Limits Label Format Colors

Text Format

Text Font: Hei 24 Regular Pick...

Text Layout

Horizontal: Center

Vertical: Middle

Line Spacing: 2

OK Cancel

PL_FB: +0.000

Data Box 2 Properties

Close button (X) in the top right corner.

Tabbed interface with tabs: **Data**, More, Entry, Format, Colors, Figure, Edge, Show.

Data Source

Value: Tag Pick...

Field Type

Contents: Label and Data ▼

Layout: Single Line ▼

Operation: Display Only ▼

Get From Tag

Limits Label Format Colors

Text Format

Text Font: Hei 24 Regular ▼ Pick...

Text Layout

Horizontal: Center ▼

Vertical: Middle ▼

Line Spacing: 2 ▲ ▼

Preview area on the right: **VL_FBFILTER: +0.000**

Image Button 3 Properties


Close button (X) in the top right corner.


Tabbed interface with tabs: **Button**, Show, Action.


Control

Maintain Aspect: Yes ▼

Images

Up:  Pick
Browse
Adjust
Clear

Down:  Pick
Browse
Adjust
Clear

Preview area on the right: 

Buttons: OK Cancel

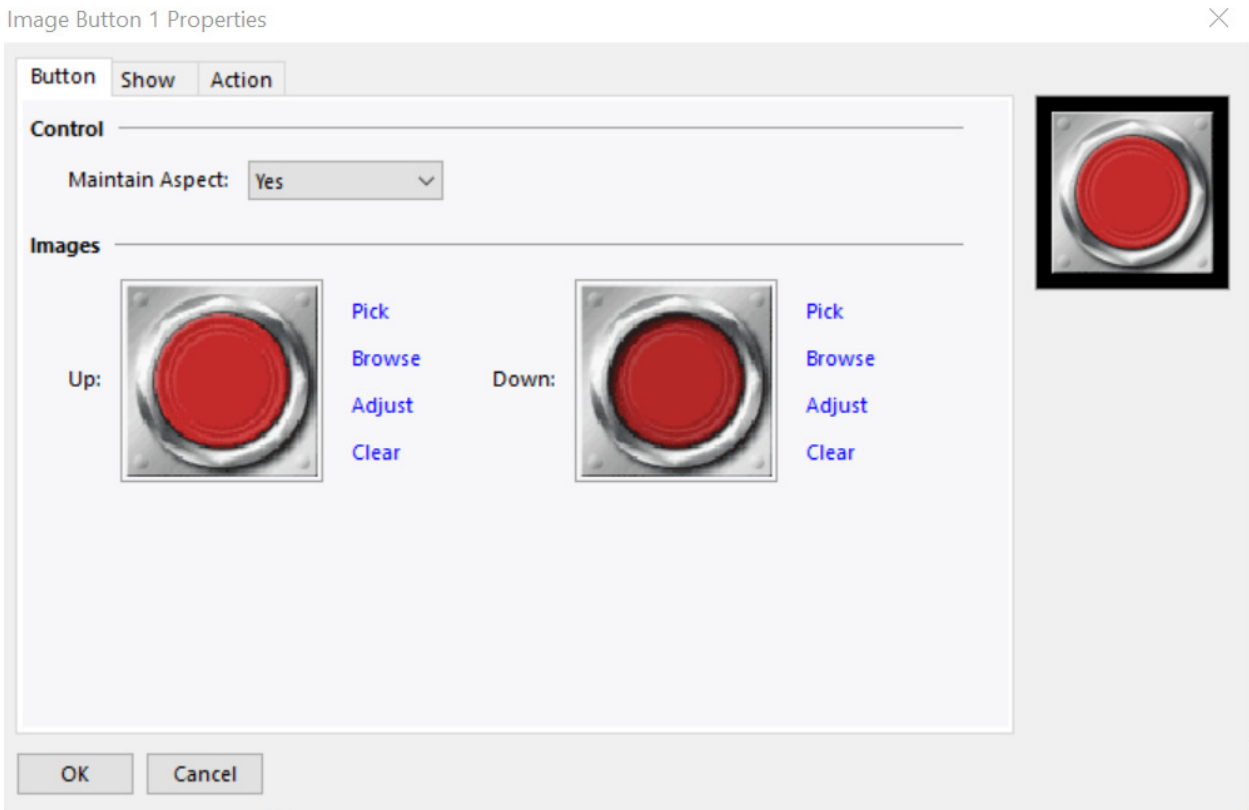
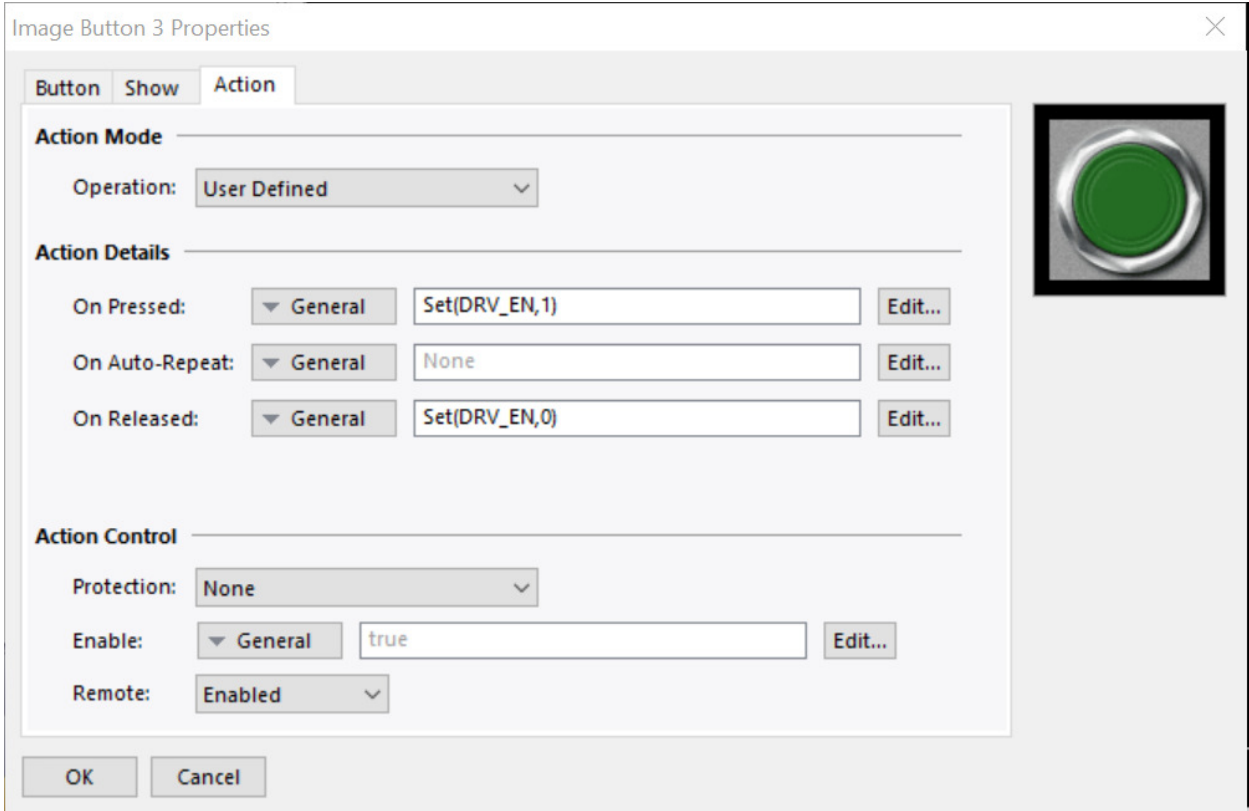


Image Button 1 Properties

Button Show Action

Action Mode

Operation: User Defined

Action Details

On Pressed: General Set(DRV_DIS,1) Edit...

On Auto-Repeat: General None Edit...

On Released: General Set(DRV_DIS,0) Edit...


Action Control

Protection: None

Enable: General true Edit...

Remote: Enabled

OK Cancel



Indicator 1 Properties


Indicator Show


Control

Status: Tag DRV_ACTIVE Pick...

Maintain Aspect: Yes

Images

Off:  Pick Browse Adjust Clear

On:  Pick Browse Adjust Clear

OK Cancel




Image Button 4 Properties

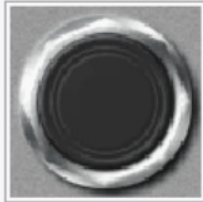


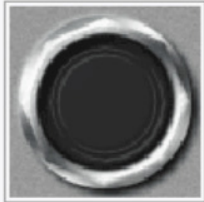
Button Show Action


Control

Maintain Aspect: Yes

Images

Up:  Pick
Browse
Adjust
Clear

Down:  Pick
Browse
Adjust
Clear



OK Cancel

Image Button 4 Properties



Button Show Action

Action Mode

Operation: User Defined

Action Details

On Pressed: General Set(MODBUS_SM,2) Edit...

On Auto-Repeat: General None Edit...


On Released: General Set(MODBUS_SM,0) Edit...

Action Control

Protection: None

Enable: General true Edit...

Remote: Enabled



OK Cancel

Button Show Action

Action Mode

Operation: Goto Page

Action Details

Target Page: Page2 New...

Show As: Normal Page

Action Control

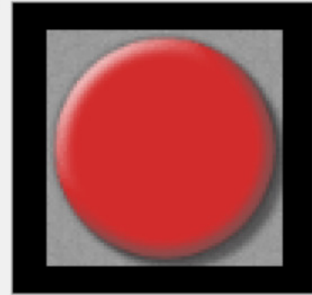
Protection: None

Enable: General true Edit...

Remote: Enabled

OK

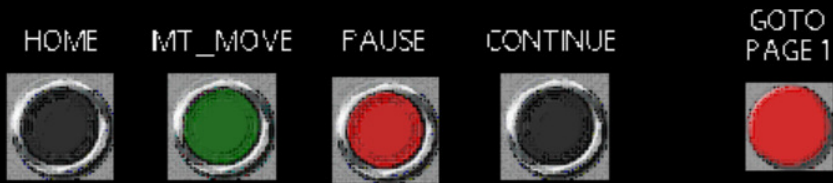
Cancel





MT_ACC_32: 0.000
MT_DEC_32: +0.000
MT_V: 0.000
MT_P_32: +0.000
MT_CNTL: 0

PL_FB: +0.000
VL_FBFILTER: +0.000



NOTE: Editing is not fully accurate at this zoom level.



Data Box 3 Properties

Data Source

Value: Tag Pick...

Field Type

Contents: Label and Data ▼

Layout: Single Line ▼

Operation: Data Entry ▼

Get From Tag

Limits Label Format Colors

Text Format

Text Font: Hei 24 Regular ▼ Pick...

Text Layout

Horizontal: Center ▼

Vertical: Middle ▼

Line Spacing: 2 ▲▼

MT_ACC_32: 0.000

Data Box 4 Properties

Data Source

Value: Tag Pick...

Field Type

Contents: Label and Data ▼

Layout: Single Line ▼

Operation: Data Entry ▼

Get From Tag

Limits Label Format Colors

Text Format

Text Font: Hei 24 Regular ▼ Pick...

Text Layout

Horizontal: Center ▼

Vertical: Middle ▼

Line Spacing: 2 ▲▼

MT_DEC_32: +0.000

Data Box 5 Properties

Close button (X)

Data More Entry Format Colors Figure Edge Show

Data Source

Value: Tag MT_V Pick...

Field Type

Contents: Label and Data

Layout: Single Line

Operation: Data Entry

Get From Tag

Limits Label Format Colors

Text Format

Text Font: Hei 24 Regular Pick...

Text Layout

Horizontal: Center

Vertical: Middle

Line Spacing: 2

MT_V: 0.000

Data Box 6 Properties

Close button (X)

Data More Entry Format Colors Figure Edge Show

Data Source

Value: Tag MT_P_32 Pick...

Field Type

Contents: Label and Data

Layout: Single Line

Operation: Data Entry

Get From Tag

Limits Label Format Colors

Text Format

Text Font: Hei 24 Regular Pick...

Text Layout

Horizontal: Center

Vertical: Middle

Line Spacing: 2

MT_P_32: +0.000

Data More Entry Format Colors Figure Edge Show

Data Source

Value: Tag MT_CNTL Pick...

Field Type

Contents: Label and Data

Layout: Single Line

Operation: Data Entry

Get From Tag

Limits Label Format Colors

Text Format

Text Font: Hei 24 Regular Pick...

Text Layout

Horizontal: Center

Vertical: Middle

Line Spacing: 2

OK Cancel

MT_CNTL: 0

Data | More | Entry | Format | Colors | Figure | Edge | Show

Data Source

Value: ▼ Tag Pick...

Field Type

Contents: Label and Data ▼

Layout: Single Line ▼

Operation: Display Only ▼

Get From Tag

Limits Label Format Colors

Text Format

Text Font: Hei 24 Regular ▼ Pick...

Text Layout

Horizontal: Center ▼

Vertical: Middle ▼

Line Spacing: ▼

PL_FB: +0.000

Data More Entry Format Colors Figure Edge Show

Data Source

Value: Tag VL_FILTER Pick...

Field Type

Contents: Label and Data

Layout: Single Line

Operation: Display Only

Get From Tag

Limits Label Format Colors

Text Format

Text Font: Hei 24 Regular Pick...

Text Layout

Horizontal: Center

Vertical: Middle

Line Spacing: 2

VL_FILTER: +0.000

Image Button 3 Properties

Button Show Action

Action Mode

Operation: User Defined

Action Details

On Pressed: General Set(HOME_MOVE,1) Edit...

On Auto-Repeat: General None Edit...

On Released: General Set(HOME_MOVE,0) Edit...

Action Control

Protection: None

Enable: General true Edit...

Remote: Enabled

OK Cancel




Image Button 4 Properties

Button Show Action

Action Mode

Operation: User Defined

Action Details

On Pressed: General Set(MODBUS_MT,24) Edit...

On Auto-Repeat: General None Edit...

On Released: General Set(MODBUS_MT,0) Edit...


Action Control

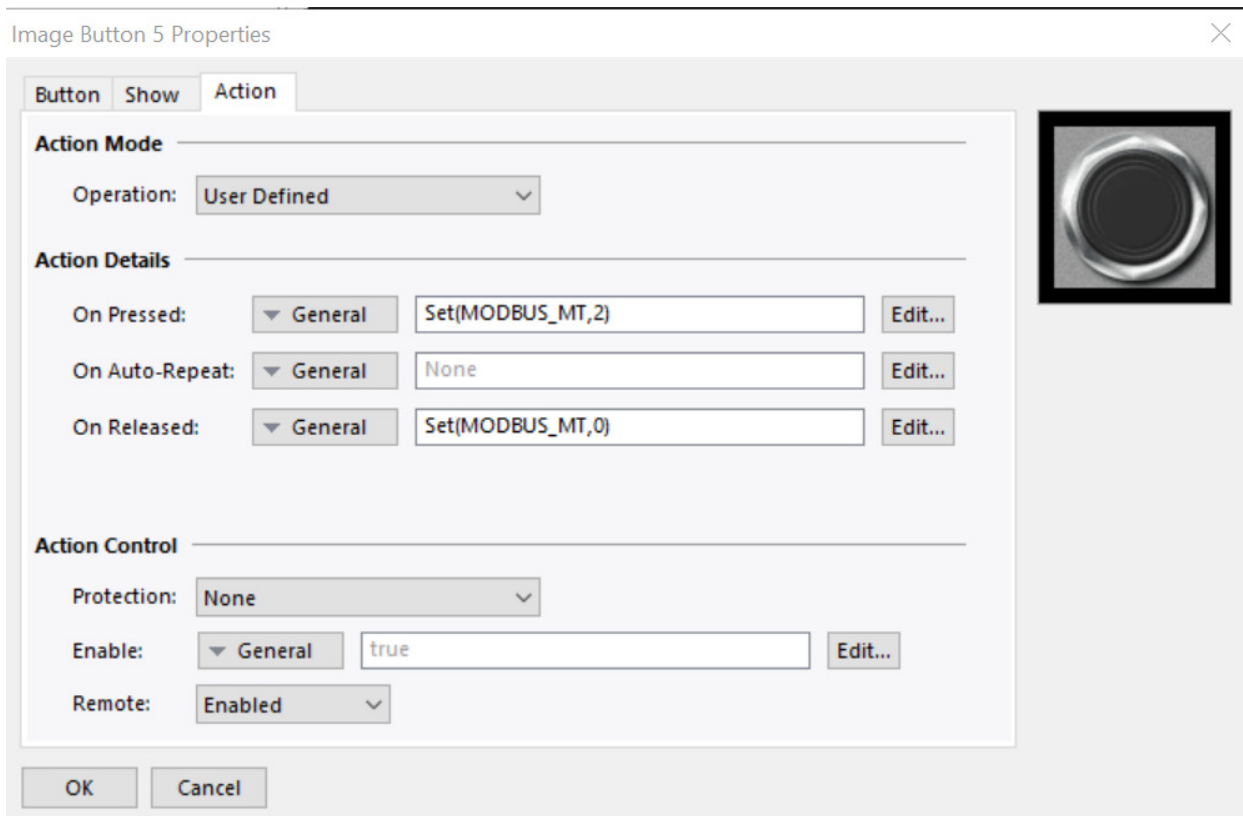
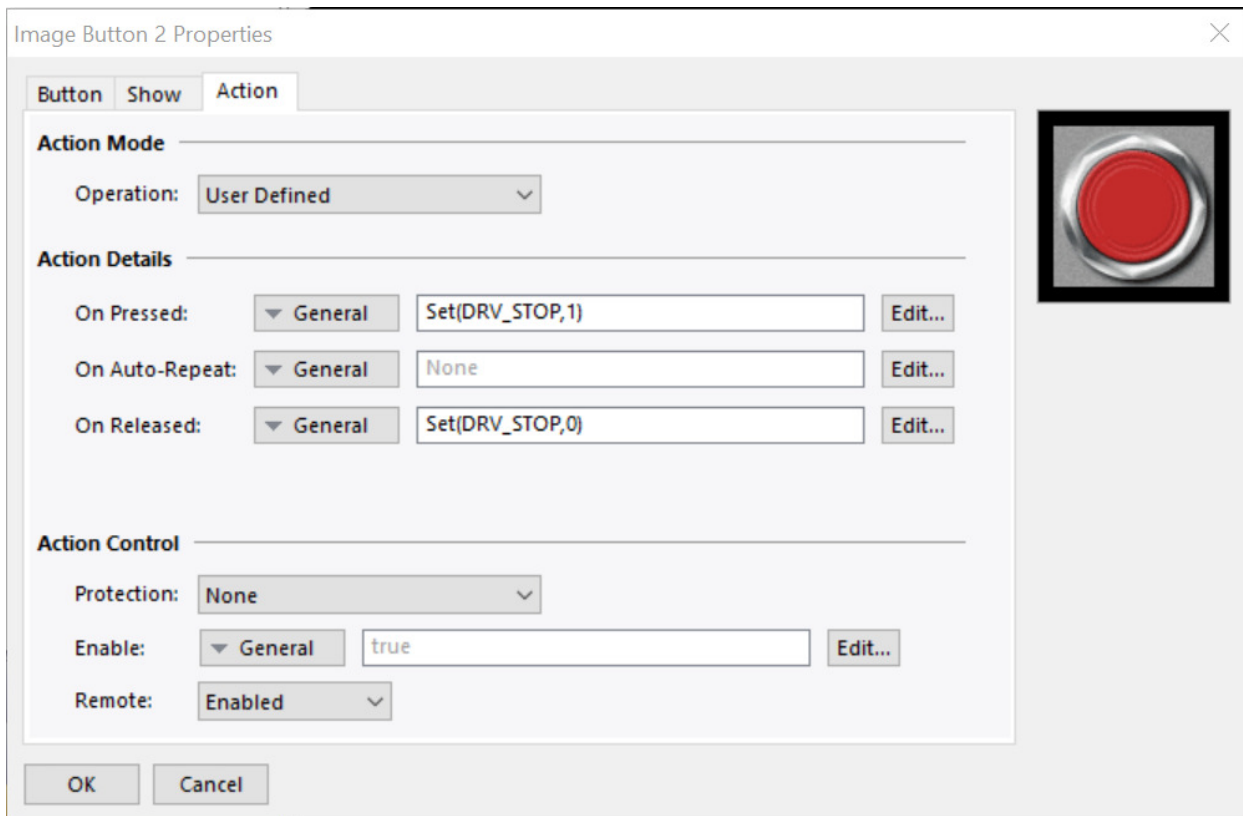
Protection: None

Enable: General true Edit...

Remote: Enabled

OK Cancel







Button Show **Action**

Action Mode

Operation: Goto Page

Action Details

Target Page: Page1 New...

Show As: Normal Page

Action Control

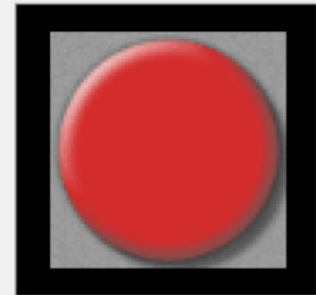
Protection: None

Enable: General true Edit...

Remote: Enabled

OK

Cancel





DRV.FAULT 1	0
DRV.FAULT 2	0
DRV.FAULT 3	0
DRV.FAULT 4	0

RESET FAULT



RETURN TO
LAST PAGE



NOTE: Editing is not fully accurate at this zoom level.



Data Box 1 Properties

Data More Entry Format Colors Figure Edge Show

Data Source

Value: General Edit...

Field Type

Contents: Data Value ▼

Layout: Single Line ▼

Operation: Display Only ▼

Get From Tag

Limits Label Format Colors

Text Format

Text Font: Hei 24 Regular ▼ Pick...

Text Layout

Horizontal: Center ▼

Vertical: Middle ▼

Line Spacing: 2 ▲▼

0

Data Box 2 Properties

Data More Entry Format Colors Figure Edge Show

Data Source

Value: General Edit...

Field Type

Contents: Data Value ▼

Layout: Single Line ▼

Operation: Display Only ▼

Get From Tag

Limits Label Format Colors

Text Format

Text Font: Hei 24 Regular ▼ Pick...

Text Layout

Horizontal: Center ▼

Vertical: Middle ▼

Line Spacing: 2 ▲▼

0

Data Box 3 Properties



Data More Entry Format Colors Figure Edge Show

Data Source

Value: General Edit...

Field Type

Contents: Data Value ▼

Layout: Single Line ▼

Operation: Display Only ▼

Get From Tag

Limits Label Format Colors

Text Format


Text Font: Hei 24 Regular ▼ Pick...

Text Layout

Horizontal: Center ▼

Vertical: Middle ▼

Line Spacing: ▲▼



Data Box 4 Properties



Data More Entry Format Colors Figure Edge Show

Data Source

Value: General Edit...

Field Type

Contents: Data Value ▼

Layout: Single Line ▼

Operation: Display Only ▼

Get From Tag

Limits Label Format Colors

Text Format


Text Font: Hei 24 Regular ▼ Pick...

Text Layout

Horizontal: Center ▼

Vertical: Middle ▼

Line Spacing: ▲▼



Button Show **Action**

Action Mode

Operation: Goto Page ▾

Action Details

Target Page: Previous Page ▾ New...

Show As: Normal Page ▾

Action Control

Protection: None ▾

Enable: ▾ General true Edit...

Remote: Enabled ▾

OK Cancel

