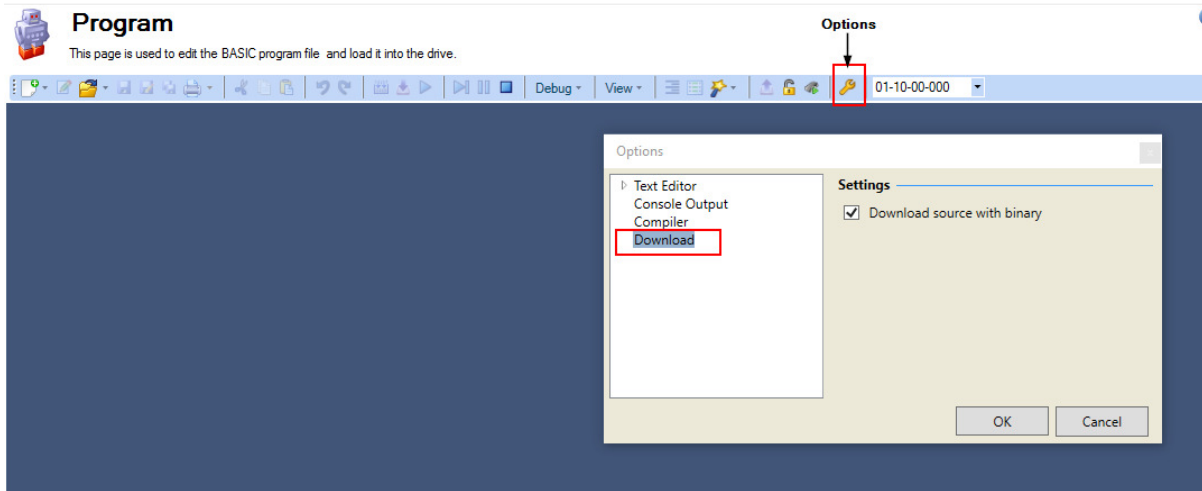


## AKD BASIC Program Protection Options

To protect user access to the program there are a couple of options in the AKD BASIC drive.

**Option#1: No Source Code Download:** In Workbench on the Program screen toolbar there is a wrench icon. On click it opens the Options window. Under Download there is a settings checkbox that allows the programmer to download the source Code ( \*.BAS ) with the \*.BIN file. If the checkbox is unchecked and you compile and download, only the \*.BIN file is downloaded. Anyone that connects Workbench to the drive will not be able to upload the source code and the Upload icon in the toolbar will not be enabled ( greyed out ). If the checkbox is checked then both the \*.BAS and \*.BIN files are downloaded to the drive.



Per the Workbench Help:

The screenshot shows the 'KOLLMORGEN®' Workbench Help page. The page title is 'KOLLMORGEN®' and the sub-header is 'Program Options'. The main content area is titled 'Compile / Download / Run' and contains text explaining the functionality of the Compile, Download, and Run buttons. A green highlight is present in the text under the 'Download' section.

**Compile / Download / Run**

The Compile button will compile your source code to binary so that you may download the program to the drive.

The Download button will download your compiled code and source code to the drive by default. If you do not wish to download the source code to the drive, go to the options menu, choose download and de-select download source with binary.

The run button will issue a VM.START to start the BASIC program in the drive. If the active BASIC program in the editor is different than the program in the drive, the run button will compile and download the program before running.

**Continue / Pause / Stop**

The Continue, Pause, and Stop options allow you to control your program while it is running.

**Debug**

The Debugger allows you to set break points and step through your program.

## Upload?

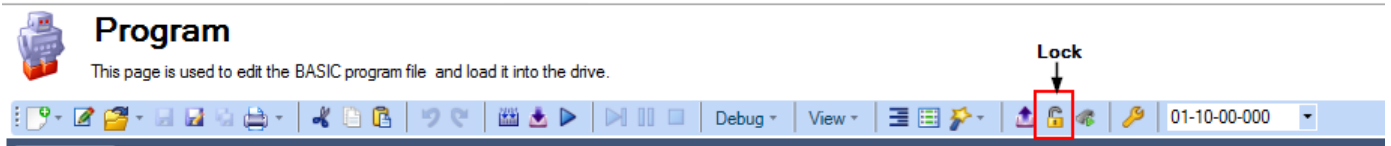
The upload tool uploads the source code from the drive. If the source code has not been downloaded, this option is not available. The tools menu allows you to select if the source code is to be downloaded with the binary.

## Lock

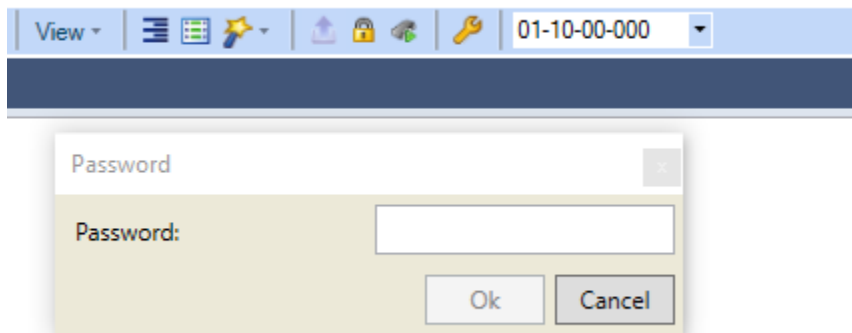
The lock tool password protects the source code in the drive. If a new program is downloaded to a drive, the original source code and password protection is erased.

## Option#2: Password Protection

Per the Workbench Help above if the source code has been downloaded to the drive the programmer has the option to Password protect it such the source code cannot be uploaded unless the password is entered correctly in Workbench.



Once locked ( the lock icon is closed as shown below ), to unlock the programmer must click on the Lock icon and will be prompted to input the correct password.



There is no method to point only to the \*.BIN file itself in Workbench ( i.e File Browser, etc. ). The SD card is supposed to have the ability to load the drive parameter and compiled file ( \*.BIN ) but based on experimentation it is not well-documented or a reliable method. Any time a drive is commissioned the one performing the commissioning should go online with the drive and verify parameters and program were loaded properly ( and running ) and then verify the operation of the drive.