



SERVOSTAR® S300

Quickstart Guide

Version 12/2010

Keep all manuals as a product component during the life span of the product. Pass all manuals to future users/owners of the product.

KOLLMORGEN®

Preparation

The CD-ROM delivered with the servo amplifier contains all the manuals in PDF format and the setup software. Insert the CD-ROM into your PC.

Autostart function activated: A window with the start screen opens.

Autostart function deactivated: Click START (task bar), then on Run. Enter x:\index.htm or x:\autorun.exe (x = CD drive letter). Click OK. The start screen opens.

Install Setup Software

Multilanguage CD-ROM: On the start screen you find a link to the setup software:

Install Setup Software S300/S700 Release __ Build __

Click it and follow the instructions from here.

North American CD-ROM: Click the product name, then select *Install Software* from the next screen. Follow the instructions from here.

Documents

You need Acrobat Reader to read the PDFs (installation link on every screen).

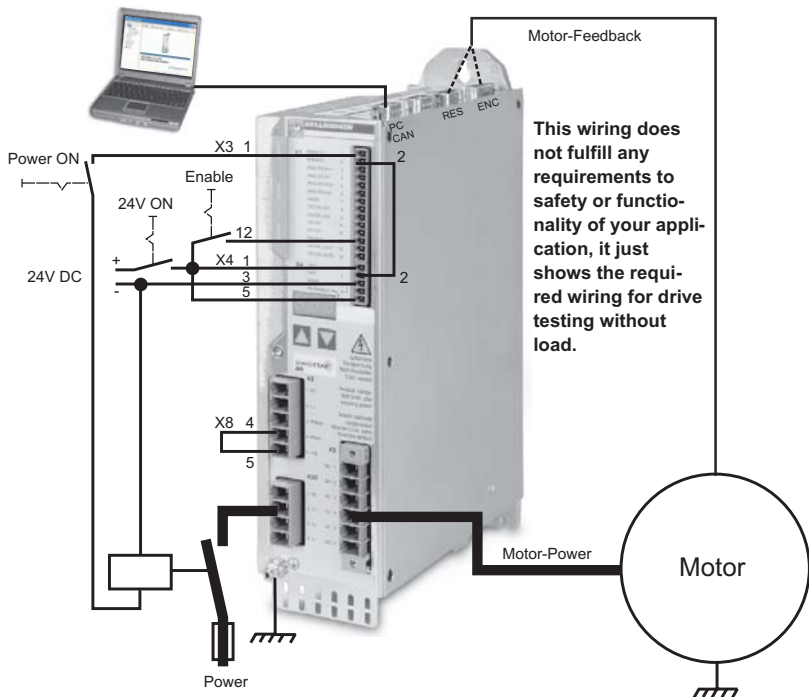
Multilanguage CD-ROM: Select the language version on the start screen of the CD-ROM. Click "Servo Drives" in the column "Technical Manuals". A table with links to all manuals appears.

North American CD-ROM: Click on any manual title automatically brings up the document.



Mechanical and Electrical Installation of the Servo Amplifier



1. Unpack servo amplifier and accessories
2. Keep the Instructions Manual ready (print if necessary), check HW-Revision
3. **Observe safety instructions in the manuals**
4. Mount the servo amplifier as described in the Instructions Manual
5. Wire the servo amplifier as described in the Instructions Manual or apply the minimum wiring for drive test (see next page)

Minimum Wiring for Drive Operation



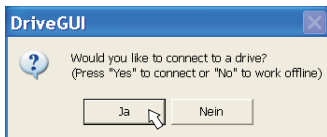
Connect

- Connect the interface cable to a serial interface on your PC and to the serial interface X6 of the servo amplifier. USB to serial converter can be used optionally.
- Switch on the 24 V logic power supply for the servo amplifier.
- Wait about 30 seconds, until the front display of the servo amplifier displays the current rating (e.g.  for 3 amps). If the mains power supply voltage is switched on, too, a leading P is displayed (e.g.  for Power, 3 amps).

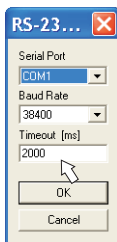
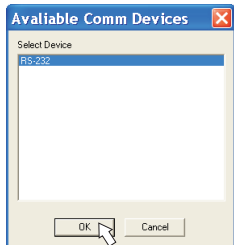
If a fault code () or a warning () or a status message ("." or " _ " or "E" or "S") appears in the display, you will find the description and hints for trouble shooting in the Instructions Manual. If there is fault, fix the problem.



Double-Click the DriveGUI.exe icon on your Windows desktop to start the software.



You can work offline or online with DriveGUI.exe.
Work ONLINE now.



If the communication is started for the first time, you have to setup the communication parameters. Choose the communication system and the interface, where the servo amplifier is connected to. Click OK.

The software tries to communicate with the drive and to upload the parameters. If it's not successful, you receive this error message:



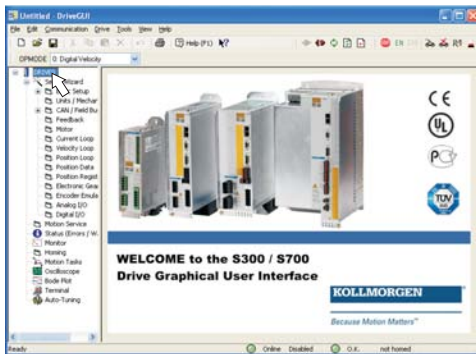
Frequent causes:

- wrong interface chosen
- wrong connector chosen at the servo amplifier
- interface is used by another software
- 24 V auxiliary voltage for the servo amplifier not working
- interface cable broken or wrong wiring

Click OK to remove the error message. The software starts in the offline mode now, that requires the manual selection of the amplifier's type. Quit this selection by closing the window.

Fix the communication problem. Restart the software in Online mode.

If communication works, you see the start screen.




Make sure, that the amplifier is disabled (Input Enable connector X3 pin 12 must be 0 V or open)!

Select "**Setup Wizard**" in the navigation frame.

Important Screen Elements


Help Function


The Online-Help gives detailed information to all parameters the servo amplifier can work with.

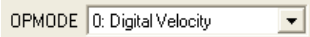
Key F1	Starts Online Help for the actual screen page.
Menu bar Help	Starts Online Help with the first page.
	Context Help. Click the help symbol first. Then click the function for which you need help.

Tool Bar



	Save to EEPROM, required if you changed parameters.
--	--

	Reset, required if you changed important configuration parameters.
--	---

	Operation Mode, use Digital Velocity mode for drive testing.
--	--

Status Bar



The status bar shows a green Online symbol, indicating that the communication works.

Setup Wizard

The Setup Wizard leads you through the necessary steps for configuring your servo amplifier. Depending on the selected application, only the active screen pages are necessary.

Welcome to the Drive Setup Wizard

This Setup Wizard will help you configure your drive. Start by choosing the type of set up from the list below: "Quick Motor/Drive Setup", "Analog Application Setup", "Gearing Application Setup", "Motion Task Application Setup" or "Complete Setup".

Click "Next" and "Previous" to move between screens, or move directly to any screen by clicking in the tree on the left. Click the "Refresh" toolbar button to bring back the original data for the screen currently showing.

When a new wizard page is opened, the current parameter values related to that page are reloaded from the drive.

Select Type of Setup Wizard

<p>Standard Servo Setups</p> <ul style="list-style-type: none"><input type="radio"/> Quick Motor/Drive Setup<input type="radio"/> Analog Application Setup<input type="radio"/> Gearing Application Setup<input type="radio"/> Motion Task Application Setup<input checked="" type="radio"/> Complete Setup	<p>Sensorless Setups</p> <ul style="list-style-type: none"><input type="radio"/> Induction Motor Setup (U/f Control)
---	--

For a quick setup select the setup type "Quick Motor/Drive Setup".

Start the Wizard.

Basic Setup

Power Supply

Mains Voltage
230 V

Response to Loss of Input Phase
Three-Phase (Current Limit), Warning n05

Amplifier

Hardware
Drive 3A

Firmware
V1.23 DRIVE Rev create.d Aug 09 16:56:39 2005

Serial Number	Run Time	Name
0	XXXX:XX h	DRIVE0

Set Software-Enable on Bootup

Next >

Mains voltage: Select the nominal mains AC voltage

Response to Loss of Input Phase: Select Single-Phase or Three-Phase operation. With three-phase operation you can select either warning "n05" or error "F19" in case of phase loss. The setting "F19" disables the output stage, "n05" is just a message.

Name: You can enter a name for the servo amplifier (up to 8 characters). This simplifies the drive identification in the system.

Set Software Enable on Bootup: Don't select this option for the quick test.

Click NEXT.

Units/Mechanical

User Units

Position

Velocity

Acceleration

Mechanical Conversion

Resolution = μm

Resolution = Motor Revs

< Previous Next >

The user units for all input fields in the setup software can be preselected here.

Position, Velocity, Acceleration

Select usable units for your application referring to the moved load.

Mechanical Conversion

The relationship between motor shaft revolution (pole pair pitch with linear motors) and motion distance of the load is specified here. Gear ratio can be calculated here as well. Detailed information can be found in the online help. Use the calculation tool based on sample applications for calculating the resolution value (press "**Calculate PGEARI/PGEARO...**" button). Select the application and enter the required values. Click "Calculate Conversion Factors..." button. Resolution is calculated now.

Click NEXT.

Motor (rotary) / Feedback - linear motor see next page

Feedback			
Type			
0 Resolver - connector X2			
Motor			
Select from Database...	No.	Name	Continuous Current
	276	DBL3H00065	1.08 A
Type	Brake		Peak Current
1: PM Rotary Motor	without		5 A
			Maximum Speed
			6000 rpm
Calculated Quick Tuning			
Load-to-Motor Inertia Ratio	Desired Servo Performance		
0	<input type="radio"/> Gentle <input checked="" type="radio"/> Medium <input type="radio"/> Stiff <input type="radio"/> Do not tune		
< Previous		Next >	

Simplified setting of the motor related parameters.

Feedback: Select the feedback type used in the motor.

Attention: Resolver is fixed to 2 pole in the Quick Motor/Drive Setup.

Change "pole n°" on feedback screen in Complete Setup later, if required.

Motor type: Click the button "**Select from Database...**". Open the database file (mdb_ ___.csv) and select the used motor. Special motors must be defined in the "Complete Setup".

Brake: If the amplifier shall control a brake, change the Brake parameter to "With"

Calculated quick tuning: If you know the load-to-motor inertia ratio (0 is for no load), enter this number here and select the desired servo performance. If you don't know the inertia ratio, select "Do not tune". **Click FINISH.**

Motor (linear) / Feedback - rotary motor see previous page

Feedback
Type: 4 Sine Enc EnDAT - connector X1
Encoder Lines: 1000
Calculate

Motor
No.: 21006
Name: JL12-050A2
Continuous Current: 4.3 A
Peak Current: 14 A
Maximum Speed: 5333 rpm
Type: 2: PM Linear Motor
Brake: without

Calculated Quick Tuning
Load-to-Motor Inertia Ratio: 0
Desired Servo Performance: Gentle Medium Stiff Do not tune

< Previous Finish >>

Calculate ENCLINES for line...
Motor pole-pair pitch: 32000 μm
Encoder signal period: 0.1 $\mu\text{m}/\text{cycle}$
Cancel Calculate ENCLINES and Return

Simplified setting of the motor related parameters.

Feedback: Select the feedback system used.

Motor type: Click the button "**Select from Database...**". Open the database file (mdb_...csv) and select the used motor out of the list. Special motors must be defined in the "Complete Setup".

Encoder Lines (appears with Feedback Type Sine Encoder):

Click "Calculate" and fill in the Encoder signal period.

Brake: If the motor has a built-in brake, change the Brake parameter to "With"

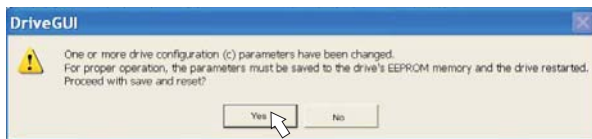
Calculated quick tuning: If you know the load-to-motor inertia ratio (0 is for no load), enter this number here and select the desired servo performance. If you don't know the inertia ratio, select "Do not tune". **Click FINISH.**

Save Parameters and Restart

You are going to finish the Setup Wizard and you have changed several basic parameters. Depending on the parameters you changed, two possible reactions will occur now:


Configuration parameters changed

A warning appears, that you have to restart the amplifier, this is called "coldstart".



Click "YES". The parameters are saved to the amplifier's EEPROM automatically and a reset command restarts the amplifier (takes a few seconds).





Other parameters changed

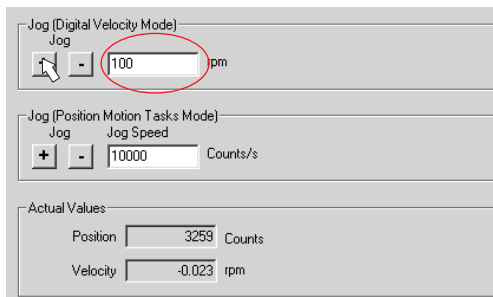
No warning appears. Save the parameters to the EEPROM of the servo amplifier manually by clicking the symbol  in the tool bar. A coldstart of the amplifier is not necessary.

Select the screen "**Motion Service**" in the navigation frame.

Motion Service (Jog Mode)

Be aware that the actual position of the load permits the subsequent moving operations. The axis could move to the hardware limit-switch or the mechanical stop. Make sure that a jerk or a fast acceleration of the load cannot cause any damage.

- Switch on the power supply for the drive.
- **STO-Enable:** Apply +24 V to the input STO-Enable [X4/5]
- **Hardware-Enable:** Apply +24 V to the input Enable [X3/12]. If STO-Enable is missed or the sequence was wrong, the front display shows .
- **Software-Enable:** Click the symbol  in the tool bar. Now, the front display shows an E and the current rating (e.g.  for Enable, 3amps). Click the symbol  to switch off the output stage (disable).



Jog (Digital Velocity Mode)
Jog - 100 rpm

Jog (Position Motion Tasks Mode)
Jog Jog Speed + - 10000 Counts/s

Actual Values
Position 3259 Counts
Velocity -0.023 rpm

Jog (Digital Velocity Mode):

You can move the drive with constant speed. Enter a safe speed.

Observe the "safe reduced speed" requirements for your application!

The drive moves with the preset speed when the + or – button is pressed. It stops when the button is released.

Actual errors and warnings are listed on the screen **Status**. A description of errors/warnings can be found in the online help.

Now you have setup and tested the basic functions of the drive successfully.

Additional Setup Screens

Observe the safety instructions in the manuals when you change parameters in the additional setup screens.

For all setup functions detailed information can be found in the Online Help system and the integrated command reference. Select "Complete Setup" in the Setup-Wizard. Now you have access to:

- **Feedback:** Adjust the used feedback unit
- **Motor:** Adjust the used motor
- **Control Loops:** Current-, Velocity- and Position-Loops can be optimized
- **Position Data:** Adjust the position control for the requirements of your application.
- **Position Registers:** up to 16 position values in the motion way can be monitored.
- **Electronic Gearing:** If the servo amplifier will follow a setpoint as a slave with a gear ratio, you can select the gearing source here and define the gear ratio.
- **Encoder Emulation:** select the encoder emulation (position output)
- **Analog I/O:** setup the analog inputs
- **Digital I/O:** setup the digital inputs and outputs
- **Status:** displays amplifiers data with history, actual faults and warnings
- **Monitor:** displays the drive data (actual values)
- **Homing:** definition and start of homing
- **Motion task:** definition and start of motion task
- **Oscilloscope:** 4 channel oscilloscope with multiple functionality
- **Bode Plot:** tool for optimizing the drive
- **Terminal:** setup the servo amplifier with ASCII commands
- **Autotuning:** fast velocity loop optimizing

Monitor

Drive P Load	<input type="text" value="3"/> %	Motor Thermostat Resistance	<input type="text" value="0"/> Ohms
Motor R Load	<input type="text" value="5"/> %	Angle of Rotation	<input type="text" value="150.0"/> °mech
Effective Current	<input type="text" value="0.049"/> A	Velocity Command	<input type="text" value="661.75"/> Counts
Current D Component	<input type="text" value="-0.021"/> A	Actual Velocity	<input type="text" value="-0.066"/> rpm
Current Q Component	<input type="text" value="-0.037"/> A	Velocity Command	<input type="text" value="0.000"/> rpm
Bus Voltage	<input type="text" value="321"/> V	Position	<input type="text" value="64183"/> Counts
Regen Power	<input type="text" value="0"/> W	Following Error	<input type="text" value="0"/> Counts
Heat Sink Temperature	<input type="text" value="25"/> °C		
Internal Temperature	<input type="text" value="28"/> °C		

Use-defined Variables to monitor

ASCII Cmd	Value	ASCII Cmd	Value	ASCII Cmd	Value
<input type="text"/>	<input type="text"/>	<input type="text"/>	<input type="text"/>	<input type="text"/>	<input type="text"/>

Analog Inputs

Input 1	<input type="text" value="-26"/> mV	Input 2	<input type="text" value="-30"/> mV
---------	-------------------------------------	---------	-------------------------------------

Digital Inputs / Outputs

IN1	IN2	IN3	IN4	Enable	OUT1	OUT2	AS-Enable
<input type="radio"/>	<input type="radio"/>	<input type="radio"/>	<input type="radio"/>	<input type="radio"/>	<input type="radio"/>	<input type="radio"/>	<input type="radio"/>

Select the screen **"Monitor"** from the navigation frame.

The Monitor screen shows all important actual electrical and mechanical values.

Documents

You need access to these documents (located on the product CD-ROM, you can download the latest editions from our website):

- Instructions Manual (Assembly, Installation, Setup)
- CANopen communication profile

Depending on the installed expansion card, you need one of these documents:

- PROFIBUS DP communication profile
- DeviceNet communication profile
- SERCOS communication profile
- EtherCAT communication profile

You need Acrobat Reader to read the PDFs, an installation link is on every screen of the product CD-ROM.

Technical changes which improve the performance of the equipment may be made without prior notice!

All rights reserved. No part of this work may be reproduced in any form (by photocopying, microfilm or any other method) or stored, processed, copied or distributed by electronic means without the written permission of Kollmorgen Europe GmbH.

Kollmorgen Customer Support - North America

E-Mail support@kollmorgen.com
Tel.: +1 - 540 - 633 - 3545
Fax: +1 - 540 - 639 - 4162

Kollmorgen Customer Support - Europe

E-Mail technik@kollmorgen.com
Tel.: +49(0)2102 - 9394 - 0
Fax: +49(0)2102 - 9394 - 3110

KOLLMORGEN®
